

## *In This Issue*

From the President	1
CAB	2
2016 CAB election	3
Something Special	3
Library	4
Rumor Has it	4
Welcome New Members	5
New Roster	5
December Events	6
January Events	7
ASG Websites	8
Ongoing fundraisers	8
Show & Share	9
Ads	5,6,7 & 8
Merchant Discounts	11

**Dreams and Seams** is published six times per year in February, April, June, August, October, and December.

## *Sew Timely*

The Sewing Factory is open! That's what it feels like as the Holiday season is upon us. The embroidery machine is stitching along on its own as I measure and cut to prepare the pieces for the next project, or trim, turn and press the one that just finished stitching. Meanwhile, I am also thinking ahead, mentally checking the list of gifts to make and the inventory of fabric, thread and zippers, to decide if I need to stop at the fabric store or machine dealer to pick up more supplies.



I expect everyone feels some stress at this time of year, but it seems that there is quite a bit more pressure on those of us who have the gift of creating, whether it is sewing, quilting, knitting or even baking. Of course there are the expectations of our families and friends, who believe that we can turn on the machine and half an hour later come out with something beautiful and original. If their "gifts" lie elsewhere, they just don't understand that there is a little more to it than that! However, I think that the most pressure on us comes from ourselves.

Sure, we enjoy making gifts for our family and friends, and you might even say we need to do it. It's how we express ourselves and our affections for them. But therein lies the source of the stress. We want to do our best work, to do it better than last year, to show everyone that we've still got "it". And then there's the "No Return" policy. Since we are making a gift for someone special to us, we want them to love it. We don't want it to end up in a drawer. It's because of this that I have a personal rule to make things only for the young children and our mothers. I usually end up breaking this rule on at least one person each year, this year being no exception. I just had to make that purple duffel bag from the fabric I bought on the bus trip, and the logical person to give it to is my niece, who is in her late 20's. Ah, well, I guess I'll never stop trying, and maybe, just maybe, it's exactly what she wanted!

-Vicky Isiefson

## Chapter Advisory Board

### President

Vicky Islielson (316) 529-1565  
[intimedesign@yahoo.com](mailto:intimedesign@yahoo.com)

### Vice President/ Community Service

Norma Womack, (316) 721-9306  
[Womack2004@gmail.com](mailto:Womack2004@gmail.com)

### Vice President/ Eat & Shop

Nancy Boewe (316) 681-0000  
[njboewe@hotmail.com](mailto:njboewe@hotmail.com)

### Secretary

Ginny Perott 316-377-9407  
[ginnyperott@cox.net](mailto:ginnyperott@cox.net)

### Treasurer

Becky Wondra (316) 722-0939  
[rlwondra1@cox.net](mailto:rlwondra1@cox.net)

### Newsletter/ Special Projects

Shirley Binder (316) 687-7257  
[scraplvr@att.net](mailto:scraplvr@att.net)

### Membership

Marilyn Kirby (316) 7441579  
[mkirby5@cox.net](mailto:mkirby5@cox.net)

### Education

Barbara Belveal (316) 522-1188  
[lbelveal@cox.net](mailto:lbelveal@cox.net)

### Neighborhood Groups

Marsha Volz (316) 789-9193  
[mvolz.sewing@gmail.com](mailto:mvolz.sewing@gmail.com)

### Special Events

Judy Troyer (620) 947-3537  
[jjtroyer@outlook.com](mailto:jjtroyer@outlook.com)

### Librarian

Lori Postlethwait (316) 832 2843  
[milo72blp@gmail.com](mailto:milo72blp@gmail.com)

### Publicity

**Mary Baker (316) 778-2259**  
[bakermflies150@gmail.com](mailto:bakermflies150@gmail.com)

### Web Mistress

Julia Langel (316) 733-4780  
[julialangel@cox.net](mailto:julialangel@cox.net)

### Hospitality

Wilma Wine (316) 832-1202  
[dawine@cox.net](mailto:dawine@cox.net)

### Fabric FUND

Penny Ruddle (316) 263-4816  
[penr8021@att.net](mailto:penr8021@att.net)  
 Sondra Schmittgens (316) 943-9813  
[aslcouple1@yahoo.com](mailto:aslcouple1@yahoo.com)

## Membership Renewal

The National office will send you a renewal notice about 2 months before your membership expires. If you don't receive a renewal notice, contact the membership chairwoman, or go to the National website, [ASG.org](http://ASG.org), where you can renew online.

### \*\*\* Address Change\*\*\*

If your address, phone number or email changes, please report the changes to both the local membership chair and the National office (You can use the website at [ASG.org](http://ASG.org).)

## A Note about Photos

As you have probably noticed, we love photos!

If you take photos at an ASG event, please consider posting them to Facebook or emailing them to the newsletter editor.

If you would rather not have your photo appear on Facebook, in the newsletter, or on the website please tell the webmistress, and the newsletter editor. If you don't see yourself here, the pose and smile whenever you see a camera, especially if you are sewing or shopping.



## Advertising rates

This newsletter is published 6 times a year. We only accept sewing-relate ads.

Our rates are:

1/8 page--\$60/year

¼ page --\$120/year

½ page--\$210/year

1 page--\$300/year

ASG members may place classified ads for 10 cents per word.

## Cares and Concerns

If you know of a guild member who is experiencing an illness or a loss in their family, please contact Marilyn John (316) 684-0355.

## *Chapter Advisory Board Election Results*

The election of the 2016 CAB took place during the annual meeting November 3. Our 2016 elected CAB members were all reelected from 2015.

President: Vicky Is liefson

1st Vice President: Norma Womak/Community Service

2nd Vice President: Nancy Boewe/Eat & Shop

Secretary: Ginny Perott

Treasurer: Becky Wondra.

Norma will now be Community Service Chair. We welcome the following new CAB members. Marilyn Kirby as our new Membership Chairman, Marsha Volz as our new Neighborhood Group Leader, Barbara Belveal Education Chair & Mary Baker Publicity Chair. Thank You to our retiring Membership Chairperson Betty Brees, Special events Co-Chair Pat Hernandez and Education Chairperson Julia Waterbury. A complete list of current CAB members and their contact information can be found on page 2 of this newsletter.

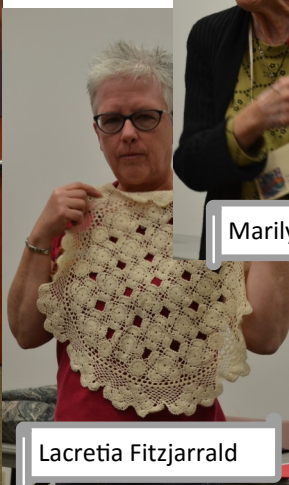
Many thanks to the Nominations Committee: Marsha Volz, Wilma Wine, and Marilyn John

## *Members Share*

### *Something Special at November Meeting*



Sondra Schmittgens



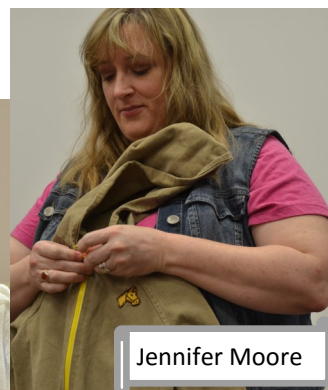
Lacretia Fitzjarrald



Marilyn Beaver



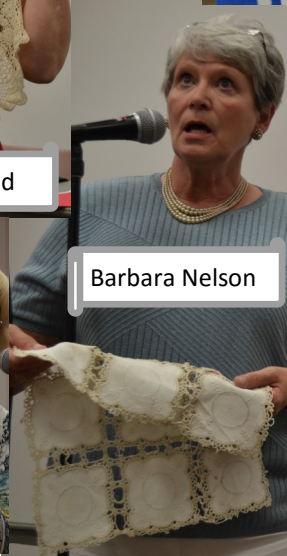
Linda Bryan



Jennifer Moore



Pat Hernandez



Barbara Nelson



Anne Jesseph



## *In the Library*

A list of all library books is available in the library notebook. It has 3 different ways to look up books-by author, by title, and by subject. Hopefully this will help all of us locate books more quickly.

We will no longer take patterns from McCalls, Vogue, Butterick or Simplicity. We will continue to take patterns from specialty and independent pattern makers.

Items in our library include books, videos, DVDs, magazines and patterns. These items may be checked out for one month at a time. DVDs and videos must be returned the following month and may not be renewed until the end of the meeting so that others have a chance to check them out.

There is a charge of \$1 per item per month for items returned late. Any item not returned within 6 months will be considered lost and the member will be responsible for replacing it.

We are also happy to receive your donations of sewing related magazines that we then sell to other members. However, we request that you limit your donations to no more than two years worth at one time, so that our librarian can handle the volume.

## *Rumour Has It....*

### ◆ **Kenneth King Workshop**

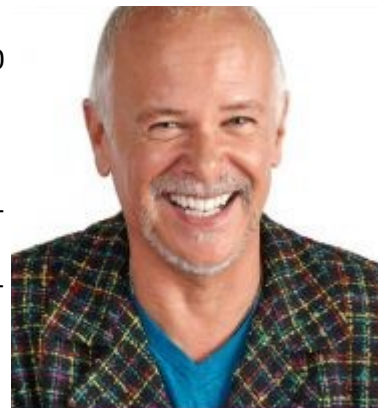
April 15-17, Kansas City Chapter Spring Education Event. Each day will be 9:00 A.M. to 4:00 P.M.

Friday, April 15: HANDS ON WORKSHOP: Copying Without Deconstruction.

Saturday, April 16: (Two part lecture series.) Cool Tricks, and Son of Cool Tricks

Sunday, April 17: (Two part lecture series.) Embellishments and Trims, and Handbags.

Watch for more details...Kenneth has been the key note speaker at the ASG Annual Conference and a regular contributor to Threads magazine



### ◆ **The 2016 ASG National Conference**



will be in Indianapolis, IN, the birthplace of the American Sewing Guild, July 7-11 at the Marriott Downtown, 314 West Maryland.. For reservations call 888-236-2427 . Use group code ASG.

### ◆ **The Sew Inspired Neighborhood Group**

will be using the new ASG e-Book Drafting a Sloper for the next several months. Find the book at ASG.org.

◆ Have you discovered a new product , technique, or source? Your Sewing Sisters would like to hear your sewing stories. You are invited to share your sewing tips, funny stories, and stitching boasts in our 2016 newsletters.

◆ Remember both ASG.org and ASGwichita.org have areas that are password protected. If you don't remember the passwords contact [info@asgwichita.org](mailto:info@asgwichita.org)



## REMINDER: Pick up Your Membership Roster

Did you put your name on the list to receive a hard copy of the Membership Roster? The hard copies will be available at the December meeting. Please pick it up from the Membership table if you are attending the meeting (save us a few \$\$ in postage.) If you cannot attend, it will be mailed to you.

If you did not request a hard copy in October or November, and you have email, rosters for 2015, in PDF format, will be emailed to you. If you don't have email you will receive a hard copy.

Questions: call or email Betty Brees, (316) 838-3709, [04120501@cox.net](mailto:04120501@cox.net)

## Welcome New Members

*We welcome you and encourage you to attend our monthly meetings and get involved in a Neighborhood Group.*

Sherryl Determann, Wichita KS

Ann McConkey, Salina, KS

Debra Miley, Wichita. KS

## Breakfast for Dinner 2015

The Child Start Hats and Mittens drive event on Nov. 14 was attended by five of our members, Theresa Corle, Nancy Boewe, Beryl Silkey, Sylvia Steinshouer and Vicky Islielson. We enjoyed a meal of breakfast items provided by local restaurants, and staffed a table at which we sold some of the aprons we made earlier in the year, along with some cookbooks produced by Child Start. The event attracted about 300 people, which was less than expected, and included music and a live auction of items donated by local businesses and attractions. As a result, we did not sell as many aprons as the Child Start Board had anticipated. The remaining aprons will be distributed to the nine Head Start locations in Wichita to be used by the children in their nutrition education programs. To learn more about Child Start, visit [www.childstart.org](http://www.childstart.org).

## NEEDLE NOOK FABRICS

### PATTERN COMPANIES

Kwik Sew	Burda
Sewkeyse	Jalie
Hot Patterns	

Have sewing questions????

Give us a call or email.

[NDLNOOKFAB@AOL.COM](mailto:NDLNOOKFAB@AOL.COM)

Check out our blogsite:

[NDLNOOKFAB.BLOGSPOT.COM](http://NDLNOOKFAB.BLOGSPOT.COM)



10% Discount for ASG

Members

regular priced fabrics  
only



- Stretch Fabrics for every occasion
- Sewing Classes
- Bra Fittings



2714 E Boulevard Plaza  
Wichita, Ks 67211-3812  
316-684-5989

### HOURS

Mon – Fri 10 am – 5:30 pm  
Saturday 10 am – 4 pm



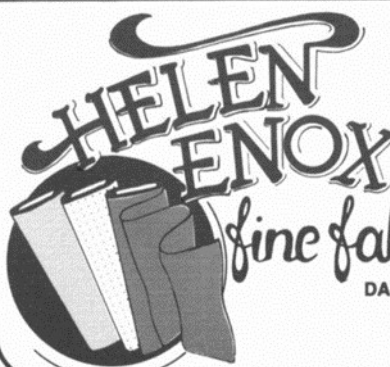
FABRICS CLASSES NOTIONS STENCILS BOOKS PATTERNS

316.558.8899

7011 W Central, Ste. 129  
Wichita, Kansas 67212

### HOURS

M - Th 10 - 5:30  
F - Sat 10 - 5:00



Fabrics For All Occasions

BRIDAL AND FORMAL FABRICS  
1332 S.W. 59th  
Okla. City, OK 73119  
(405) 685-1279  
FAX: (405) 685-0764

DAYWEAR AND SPORTS FABRICS

HOURS Mon. - Sat. 10 - 6

## December Events

### General Meeting –December 1

#### Christmas Party, Gift Exchange and Stocking Challenge

- ♦ Members whose last name starts with J through Z bring treats
- ♦ Bring Stockings and stuffers to donate to local charities
- ♦ Bring a wrapped homemade Christmas themed gift
- ♦ 1:30 pm and 7 pm, Extension Center
- ♦ Vicky Is liefson (316) 529-1565

### CAB Meeting – Dec. 1

- ♦ Exchange Blue Books for new, changing or retiring CAB members
- ♦ Immediately after the afternoon General Meeting
- ♦ Vicky Is liefson (316) 529-1565

### MEOW Neighborhood Group-December 9 Christmas Party

- ♦ 2 pm, A-1 Singer, 1012 S. Oliver (Parklane Shopping Center)
- ♦ Donella Cole (316) 773-4374

### Serger Neighborhood Group- December 14

#### Serger Party

**Note: date, time and location change**

- ♦ 11 am, Home of Wilma Wine
- ♦ Penny Ruddle (316) 263-4816

### Eastside Neighborhood Group- December 15

#### Christmas Party

- ♦ 7 pm Needle Nook Fabrics
- ♦ Theresa Corle (316) 689-6702

**Sew Inspired Neighborhood Group-**  
No meeting

**Serge It Up Neighborhood Group-**  
No meeting

### 5th Tuesday & Wednesday Sew In– September 29 & 30

**Work on Projects, Go to Lunch!**

**Come one or both days**

- ♦ 9 am to 4:00 pm, Extension Center
- ♦ Vicky Is liefson (316) 529-1565

### *Christmas is Coming*

We will be celebrating the holidays two ways at our meeting December 1.

**Giving:** We will once again be collecting Christmas Stockings to be donated to Charity.

**Giving and Receiving:** Gift exchange. Bring a home-made Christmas themed household item for a gift. We will do an exchange and reveal at the meeting. You go home with a treasure made by an ASG friend. Remember: Treats for the Christmas Party are provided by members with last names J-Z.

## THE SEWING CENTER

2407 W.13st

Wichita, Ks 67203

(316)-832-0819

**CHARLEY & BEV SEYFERT**

**e-mail: [staff@kansassewbiz.kscocmail.com](mailto:staff@kansassewbiz.kscocmail.com)**

**web: [www.thesewingcenterwichita.com](http://www.thesewingcenterwichita.com)**

**JUKI SINGER elna JANOME**

**NEW & USED SEWING MACHINES • REPAIR SERVICE  
FABRICS • NOTIONS • HOME-OWNED**

# January Events

## General Meeting –January 5

**"From the neck up". making and wearing a hat.**

**Jack Kellogg from Hatman Jack's**

- ♦ The evening meeting will be a recording of the afternoon meeting.
- ♦ 1:30 pm and 7 pm, Extension Center
- ♦ Vicky Is liefson (316) 529-1565

## Meow Neighborhood Group-January 13

### Monograming

- ♦ By Marilyn Kirby
- ♦ 2 pm, A-1 Singer, 1012 S. Oliver (Parklane Shopping Center)
- ♦ Donella Cole (316) 773-4374

## Sew Inspired Neighborhood Group-January 18

### Drafting a Sloper ASG e-Book

#### Tools & Terminology

- ♦ 1:30 pm, A-1 Singer, 1012 S. Oliver (Parklane Shopping Center)
- ♦ Shirley Binder (316) 687-7257

## Eastside Neighborhood Group-January 19

### Necktie Rose

- ♦ By Betty Brees
- ♦ 7 pm, Needle Nook Fabrics
- ♦ Theresa Corle (316) 689-6702

## Serger Neighborhood Group-January 25

### Pajama Pants

- ♦ 1 pm, Hancock Fabrics West, 7393 W, Central
- ♦ Penny Ruddle (316) 263-4816

## CAB Meeting –January 26

- ♦ Plan upcoming events
- ♦ 1:30 pm, Ingle Room Sedgwick County Extension Center
- ♦ Vicky Is liefson (316) 529-1565

## Serge It Up Neighborhood Group-January 28

Embellishing with your Serger Threads to try

- ♦ 9:30 am, A-1 Singer, 1012 S. Oliver (Parklane Shopping Center)

Both a legend and a treasure, Wichita native Jack Kellogg has been making hats for nearly four decades. His tradition of expertise, skill, and customer service brings personal attention to each customer to find the right hat for them. Founded in 1976, Hatman Jack's Wichita Hat Works has become the third-largest hat store in the nation and specializes in the lost art of fitting a hat to your face shape, complexion, and head size. Hatman Jack's is located in the Delano District at 601 W. Douglas.

Singer  
Approved  
Dealer

Brother  
Approved  
Dealer

Pfaff  
Approved  
Dealer

## A-1 Singer Sewing Center

Dawna O'Connor

"We sell the best and service the rest!"

316-685-0226

Park Lane Shopping Center  
1012 S. Oliver  
Wichita, KS 67218  
1 (800) 725-0226  
[www.A-1Singer.com](http://www.A-1Singer.com)



## *Our Websites -- ASG.org & ASGwichita.org*

Did you know that you can see the current issue of Dreams and Seams in color on both the national website ASG.org and our very own new ASGwichita.org?

Our local website also features an event calendar as well as a password protected member resources center where you can look up members names and phone numbers on the membership roster, check something from a previous newsletter, or view photographs from recent events.

How many of you have taken the time to surf the ASG National website recently? There is so much information for us to check out! A new list of more than 50 Special Offers from sponsors and advertisers has been posted in the Members Only section. All of these Special Offers are available only to ASG members, and the details are only on the ASG Web site. Check out all of the offers, including coupon codes and expiration dates. The ASG On-line has over 100 video resources for members only! And they are all free!! You will find everything from general sewing techniques to serger, machine embroidery, pattern alterations, and projects! Isn't being an ASG member fun?! Don't forget to check out the newsletters of the other chapters especially if you are traveling and want to attend one of their chapter meetings. Or shop their local advertisers. As a member, you can attend ASG functions nationwide.

### **Midwest Sewing & Vacuum**



*We service what we sell.*

#### ***Two Locations***

**111 Pattie**  
Wichita, Kansas 67211  
(316) 262-3438

8:30-5:30 M-F, 9-4 Sat.

**7130 W Maple St Suite 260**

Wichita, Kansas 67209

(316) 722-9737

10-5:30 M-F, 10-4 Sat.

[www.midwestsewing.net](http://www.midwestsewing.net)



## *On-Going Fundraisers*

A number of back issues of sewing magazines have been donated, including Ottobre, Sew Beautiful, Sew News, and Creative Machine Embroidery. Look for these for sale in the next few months.

Most fabric is sold at \$1 per yard, but there are some high quality quilt cottons priced a little higher.

Now sold from the Fabric Fund tables: Patterns and magazines that have been donated by members are for sale for 25 cents each or 5 for a dollar. Funds raised go to buy items for the library and some of our other activities. Happy shopping!

***Tables open before and after the meeting and during refreshment break.***

**We receive rewards money from the following:**

**Dillons Community Rewards program** <https://www.dillons.com/communityrewards>

[www.smile.amazon.com](http://www.smile.amazon.com)





Marilyn John



Judy Troyer



Brenda Brack



Carol Graham

*October  
Show & Share*



Joan Fitzjarrald



Wilma Wine



Jean Horstman



*November  
Show & Share*



Pat Hernandez



Phyllis Calvert



Sharon Chesmore



Penny Ruddle



Julia Waterbury



Judy Troyer



Jean Mulford



## Merchant Discounts

### A-1 Singer Sewing Center (15%)

(316) 685-0226, A-1singer.com  
1012 S Oliver  
Wichita KS

### Hancock Fabrics (10% on some things)

7395 W Central (316) 722-7554  
8131 E Kellogg (316) 682-4574  
Wichita KS

### Helen Enox Fine Fabrics (10%)

(405) 685-1279  
2209 SW 74th St, Suite # 318  
Oklahoma City OK 73159

### Hen Feathers (Punch Card)

(316) 652-9599, Henfeathersquilts.com  
110 N Rock Rd  
Wichita KS

### JoAnn Fabrics & Crafts (10%)

All locations

### Midwest Sewing Center (15%)

111 S Pattie (316) 262-3438  
7130 W Maple #260 (316) 722-9737  
Wichita KS  
Midwestsew.net

### Needle Nook Fabrics (10% off regular priced fabrics)

(316) 684-5989, ndlnookfab.blogspot.com  
2714 Boulevard Plaza  
Wichita KS

### The Sewing Center (10% excl. machines)

(316) 832-0819  
2407 W 13th St. N  
Wichita KS

## ASG on the Web

Wichita ASG site: [ASGWichita.org](http://ASGWichita.org)

Wichita ASG Facebook page: [www.facebook.com/asgwichita](http://www.facebook.com/asgwichita)

Wichita ASG email: [asgwichita@yahoo.com](mailto:asgwichita@yahoo.com)

National ASG site: [www.asg.org](http://www.asg.org)

National ASG Facebook page: [www.facebook.com/sewingguild](http://www.facebook.com/sewingguild)

## American Sewing Guild CHAPTER MEMBERSHIP FORM

Name \_\_\_\_\_

Address \_\_\_\_\_

City \_\_\_\_\_

State \_\_\_\_\_ Zip \_\_\_\_\_

Daytime phone \_\_\_\_\_

E-mail \_\_\_\_\_

☐ New ASG Member .....\$50

☐ New ASG Junior Member .....\$25

Chapter (city/state) Wichita/KS

☐ ASG Member at Large .....\$50

☐ Renewal Member .....\$45  
(if received before membership expiration date)

☐ Late Renewal .....\$50  
(if received after membership expiration date)

☐ Junior Renewal .....\$25



### Junior Member Information:

Birthdate (MM) \_\_\_\_\_ (DD) \_\_\_\_\_ (YYYY) \_\_\_\_\_

School Name \_\_\_\_\_

Grade/year in school \_\_\_\_\_

### Payment:

☐ Check payable to "American Sewing Guild"  
☐ MasterCard | Visa | AmEx | Discover (circle one)

Account#: \_\_\_\_\_

Expiration Date: \_\_\_\_\_ CVV# \_\_\_\_\_

Signature: \_\_\_\_\_

Return to:

(Please allow 2-4 weeks for processing)

### The American Sewing Guild

9660 Hillcroft, Suite 510, Houston, TX 77096

PH: (713) 729-3000 • FAX (713) 721-9230

Email: [info@asg.org](mailto:info@asg.org) • Website: [www.asg.org](http://www.asg.org)

**AMERICAN SEWING GUILD, INC**

WICHITA KS CHAPTER  
PO Box 49539  
Wichita, KS 67201-4539

NON-PROFIT ORG  
U.S POSTAGE  
**PAID**  
WICHITA, KS  
PERMIT NO. 923

Asgwichita.org  
December2015/January2016

**ASG: Advancing Sewing As An Art And Life Skill**  
**Membership has its privileges!**

- Monthly meetings
- Educational programs from local and industry professionals
- Learn time-saving techniques
- How-to demonstrations
- On-line classes
- Specialty Neighborhood Groups
- Receive encouragement and support
- Share and network with sewing friends
- Attend chapter-sponsored events at member-only rates
- Participate in fashion shows and sewing fairs
- Contribute to community outreach through sewing
- Get discounts at local and national stores

