

DREAMS and SEAMS



Vol. 2 No. 3

American Sewing Guild -- Wichita, Kansas Chapter

June/July 2000

Words of Wisdom

Sizzling Summer Sewing!

By Denise Dias, Chapter President

Wow have we had a great spring or what??? I enjoyed the Fabric Swap and bought this fabulous piece of fabric... I can't wait to sew it up for a fall outfit.

If you did not make it on the McCalls' bus trip then you missed a wonderful day of learning about the pattern industry and seeing great fabrics and notions. We even were featured in the *Topeka-Capital Journal*. What a day!

The national headquarters is hosting a Regional Meeting for Chapters in St. Louis and three officers

plan to represent us at this meeting. It is always wonderful to meet with other "sewists", because they are some of the nicest people I know.



Did you check out the schedule for the national convention in San Diego??? It looks to be even better than last year, and I thought it couldn't be topped!

Wow, this will be a great time to super-charge your sewing batteries and get excited to sew for summer. I find that sewing in the summer is great, because you can do it inside where

(Continued to page 4.)

Featured in April & May

Prairie Points and Table Toppers

Jill Ensminger from Prairie Points Fabric, LLC, 6 South Main, Hutchinson, Kansas 67501 (316-663-0900), brought several bolts of fabric from her store to show Guild members and passed out "10% Discount Cards". She also explained the process of making tinsel, turning wood fiber into fabric. Her selections were nice, and we hope that when you are in Hutchinson you will stop in at Prairie Points Fabric, thank Jill for her

support of the Guild, and take time to look at the fabrics, notions and sewing information that this retailer offers.

The May meeting was presented by our own **Denise Dias**, FACS Agent and Guild President. Denise showed how with a little fabric, a little time, and a little ingenuity you can make your own table linens. She passed out instructional sheets on making festive Christmas tree napkins

from a circle design (*it's all in the fold*) and making one of her favorites a simple table runner. It's important to remember that making placemats reversible is a GREAT idea for holidays (*i.e. Valentines Day/St. Patrick's Day or Father's Day/4th of July*). Who should you treat more special than your family? Remember to use those decorative stitches on your machines to hem linens and match your china pattern.

Next Meetings:

JUNE

Tuesday, June 6

"Sewing Machine Embroidery"

Presented by Martha Flanagan
FACS Agent from Cherokee Co.
Meetings at 1:30 & 7:00 P.M.

**REMEMBER YOUR ITEMS
FOR THE SEWING CHALLENGE!**

JULY

Tuesday, July 18

"Sew-In"

All-Day "Sew-In" from
9:00 A.M. to 9:00 P.M.

We will break at noon and
6:00 P.M. for a salad potluck &
business meetings 1:30 & 7:00 P.M.

Both monthly meetings will meet
at Sedgwick Co. Ext. Center
7001 W. 21st St. North



Getting To Know You. . .

Sue Carpenter, Special Events Chairman (Interviewed by Chapter Secretary Sondra Schmittgens): Sue Carpenter has been Special Events Chairman for our Guild since its inception planning wonderful things like the Fabric Swap and Shirley Adams' visit.

Sue was born in Chanute, Kansas. She grew up in Lawrence, Dodge City, and finally ended up in Wichita at age 14. (*That's how it is when you're on the lam.*) Travel, travel, travel... and she still seems to leave town on pretty short notice. Sue is married and has four wonderful children and eight grandchildren.

Sue started sewing in junior high school. Her teacher told her that her talents must lie in another direction. However, she persevered out of necessity (kids) and became the skilled seamstress she is today. She took sewing classes at the Extension Office. After a while she started working there part-time and now works there full time as a "Program Assistant."

Sue's biggest sewing challenge was making her daughter's wedding gown. She cut for one entire day, thought for three weeks, sewed for one day, thought for three weeks... you get the idea. Now she is doing it again with her second daughter. This daughter wants bead work and wants part of her mother-in-law's gown incorporated into hers. Whew!!! Sue's other interests include teaching country dancing with her husband, and, you guessed it, traveling.

The Five Questions: Q: Do you prefer Vogue or Butterick? A: *Butterick*. Q: Do you prefer linen or perma-press? A: *Perma-press*. Q: Do you prefer to sew or eat chocolate? A: *"Some days I need chocolate and some days I need to sew."* Q: Do you always back-stitch a seam? A: *Most of the time*. Q: What is your favorite sewing notion? A: *Fiskar thread snippers*. (Author's note: Get to know Sue before she has to leave town again!)

ADVISORY BOARD MEMBERS:

President: Denise Dias

794-2533 (H), 722-7721 (W)

E-mail: ddias@oznet.ksu.edu

Vice President: Shirley Binder

943-5063 (H), 684-5855 (W)

E-mail: sbinder@fn.net

Secretary:

Sondra Schmittgens, 943-9813

E-mail: aslcouple@gateway.net

Treasurer:

Barbara Blackman, 721-5524

Librarian/Historian:

Aurelia Lobban, 522-5282

E-mail:

Membership Chairman

Lois Welch, 943-2835

E-mail: Junellenwlc@aol.com

Newsletter Chairman:

Marcia Davis, 686-4854

E-mail: Gbmhh@aol.com

Education Chairman:

Becky Wondra, 722-0939

E-mail: rtwondra@aol.com

Community Service Chairman:

Sandra Zarnikow, 773-5953

E-mail: SandPatti@aol.com

Publicity Chairman:

Malynda Perkins, 788-7015

E-mail: malynda@feist.com

Retail Liaison Chairman:

Feryl Giesen, 721-4178

Anne St. Clare, 684-5989 (W)

E-mail: needlenookfab@aol.com

Special Events Chairman:

Sue Carpenter, 721-7630

E-mail: sewlady@kscable.com

Hospitality Chairman:

Aletha Van Camp, 943-0394

Sew Natural

**SUPER Grand-Opening & Anniversary
SALE - SALE-SALE**

Thursday May 25th thru Saturday June 10 only!

M-F 9:30 - 5:30 - Thursdays til 8 pm - Saturdays til 5pm - closed Sundays & Mon. May 29

15 days of 15% savings throughout store!

Fashion fabrics as much as 75% off original price!

710 N. Main St • Newton, KS 67114 • 316-284-2547

now online at **www.sewnatural.net**

email: charlotte@sewnatural.net

ADVERTISING RATES

Ad rates for our bimonthly ASG Newsletter will be as follows:

Inserts (one sheet-8 1/2" x 11")...\$30

*Inserts with multiple sheets
are priced by weight.*

Full Page \$50

1/2 Page \$35

1/4 Page \$20

Business Card \$10

Classifieds 10¢ a word

The Deadline for the August/September issue will be June 27. Send or give your info. in writing by that date to:

Marcia Davis, 1020 N. Pinecrest
Wichita, KS 67208

or E-mail: Gbmhh@aol.com

✓ **Mark Your Calendar NOW**

PROGRAM SCHEDULE UPDATE

Thanks to **Becky Wondra**, our Guild's Education Chairman, we have some wonderful programs scheduled for future meetings. All meetings will be held at the Sedgwick County Extension Education Center, 7001 W. 21st Street North at 1:30 and 7:00 P.M.

(Except for the July & August meetings. The July meeting will be an ALL-DAY "Sew-In" from 9:00 A.M. to 9:00 P.M. The August 1 meeting will ONLY be held at 7:00 P.M., because it is a Trunk Show. The "Workshop" on August 2 will be from 9:30 A.M. to 3:00 P.M.)

You won't want to miss any of them... Check out the following:

June 6

"Sewing Machine Embroidery"

Presented by Martha Flanagan
FACS Agent from Cherokee Co.

**ALSO REMEMBER YOUR ITEMS
FOR THE SEWING CHALLENGE!**

July 18

"Sew-In"

(See information on page 1)

August 1

(7:00 P.M. only)

"Trunk Show"

Presented by Joyce Livingston
Noted Author and Lecturer

August 2

"All-Day Workshop"

Joyce Livingston will show us how to turn a T-shirt into a jacket
(See two-page registration information and supply list inserted in the center of this newsletter.)

Wichita Chapter ASG Loads Up the Bus & Heads Out

by Sue Carpenter, Special Events Chairman

The recent ASG bus trip to the McCalls Pattern Factory in Manhattan, Kansas, and several fabric shops in the area was a tremendous success. Despite the early time of departure and a very busy day, most participants wore smiles both when they boarded the bus and when they departed with their arms full of shopping bags containing their purchases.

The tour of the pattern factory was both interesting and educational. When you actually see what it takes to get our patterns printed, maybe you can forgive them one tiny error now and then. When we stopped at Threadwear in

Topeka, we were suprisingly enough greeted by the Press as well as the employees. As we shopped and made our purchases, pictures were taken and questions asked. As a result, an article about our visit was in the *Topeka Capital-Journal* the very next day -- one small claim to fame. Two fabric shops as well as a yarn shop in Lawrence completed our day -- but not our enthusiasm. It really was very interesting to see what other fabric shops are doing in comparison to ours.

Among all the comments that were heard concerning the trip was one that was repeated over and over... **"Let's Do It Again!"**

The Quilt Shop, LTD

2511 North Main, N Newton, Ks 67117

Fabrics, Quilt Books, Stencils, Patterns,
Notions and related
supplies. Classes

(316) 283-2332

Mon - Fri 9:00 - 5:00
Sat 9:00 - 4:00

Wilma Schmidt
Hulda Schrag



THE BUTTON HOLE FABRIC SHOP

Over 5000 Bolts of Fabric for
Apparel • Quilting • Crafting Come
Special Orders Always Welcome
Variety of Sewing Classes Available

Sew With Us!

Evelyn Birkhead
Owner

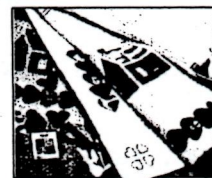
Customer Service & Support

241-5257

Toll free 1-866-4FABRIC

102 S. Main McPherson

www.thebuttonhole.net
buttonhole@loika.com



brother Dealer

Don't Let Their Support Go Unnoticed!!!

Don't forget to patronize those advertisers who support our ASG Chapter and thank them for their support. Following is a list of retailers, and the discounts they offer to ASG members on regularly priced fabric and notions.

Remember, to receive your special ASG discount, show your membership card at the cutting table, when purchasing fabric or at the cash register, before purchases are entered.

Receive a 10% discount at:

Hancock Fabrics -- East
JoAnn Fabrics - Parklane
NeedleNook - Blvd. Plaza
Prairie Quilts - Parklane

Receive a 15% discount at:

A-1 Sewing Center - Parklane
The Button Hole - McPherson, KS

Embroidery Placement Guidelines

*Reprinted from On Pins and Needles,
Niles, Ohio Chapter -- May-July 2000*

T-shirts -- 7½" to 9" down from the left shoulder seam
4" to 6" from center.

Golf Shirts -- 7½" to 9" down from the left shoulder seam & 4" to 6" from the center. In line with the neck meeting the shoulder seam.

Full Fronts -- Depends on size of garment. Center of design should be high enough on the garment to ensure that no part of the design falls below the bottom of the "arm pit". Tip of design 3" below the neck band.

Full Backs -- Top of design 5" down from the base of neck. Large designs OK to go below arm pits. On garments with hoods, design must be placed lower to clear hood.

Jackets -- Left breast area: 3½" to 4" over from the shoulder seam.

Wash Cloths -- 1½" above hem or 1" above border.

Hand Towels -- 2" above hem or 1½" above border

Bath Towels -- 4" above hem or 2" above border.

Words of Wisdom... (Continued from page 1)

the air conditioner is on. I have been busy making garments for classes, and I am ready to make some unique things to wear to National Convention this August. What a busy sewing summer it looks to be.

I would encourage you to learn a new technique or try a new pattern and make your summer wardrobe sizzle.

Happy Sewing!

Denise

Prairie Quilts



1010 S. Oliver, Wichita, KS 67218

email: quiltsfun@prairiequilts.com

www.prairiequilts.com

Shirley Binder - Owner

316-684-5855

carolyn's corner

ANTIQUES

HAND-MADE RUGS

RAGS FOR RUGS

CRAFTS

CUSTOM ORDERS WELCOME

CAROLYN ANDERSON
(316) 687-6927

1938 SIEFKIN
WICHITA, KS 67208

Fabrics — Notions — Quilting Supplies

COUNTRY FABRICS

6411-D W. Morgan Ave.
Hutchinson, KS 67501

(316) 662-3681

Mon.-Sat. 9-5:30

5 Miles S.W. of Hutchinson on Hwy. 50

Locally Owned and Operated Since 1977
Janet, Randy and Leland Headings

...for the Love of Sewing...

The American Sewing Guild Conference 2000 will be held in San Diego, California, August 2-7, 2000, at the Town & Country Resort and Convention Center.

This 12th annual conference will be the biggest bash of the year!!! Teachers from the U.S., Canada, Australia and France will hold Lectures, Demonstrations and Trunk Shows. Plan now to attend.

For a free brochure call Toll Free 1-877-I CAN SEW or visit the website at www.asg.org today!

A good way
to store pins while
keeping them handy
and accessible while sewing is to
buy one of those containers
designed to store paperclips in.
It is usually a plastic container
with a magnet around the
top in the office
supply section!!!

Welcome to Our New Members and Renewals

A very special "WELCOME" to all the members of the Hutchinson Chapter of the ASG who are now members of this Chapter.
We all look forward to getting to know one another better.

NEW MEMBERS:

Arnold, Gail	794-2125	126 Brazos	Goddard, KS 67052
Bachus, Kay	681-1874	19 Drury Ln.	Wichita, KS 67207
Bledsoe, Carol	773-2212	10037 Prairie Woods Ct.	Wichita, KS 67209
Forsyth Mork, Marilyn	264-9233	1144 Forest	Wichita, KS 67203
Orr, Diana	722-2149	12235 Sheriac Cir.	Wichita, KS 67235
Plett, Pat	652-0073	956 S. Oliver	Wichita, KS 67218
Weber, Carolyn	721-0705	349 N. Brunswick	Wichita, KS 67212

RENEWALS:

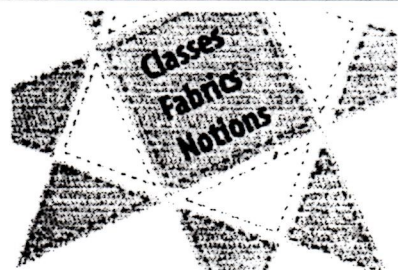
Beck, Joan	365-3469	1012 Meadowbrook Rd.	Iola, KS 66749
Blackman, Barabar	721-5524	6901 W. Clearmeadow Cir.	Wichita, KS 67205
Calvert, Phyllis	943-6345	4405 W. 13th St. North	Wichita, KS 67218
Milner, NancyRoss	685-7682	348 S. Brookside Dr.	Wichita, KS 67218
Perkins, Malynda	788-7015	701 Parklane St.	Derby, KS 67037
Tatkon-Coker, Andrea	(not available)	1806 Valley View Dr.	Salina, KS 67401

Gale Grigg Hazen -- Featured Speaker

The Wichita, Kansas Chapter of the ASG will be holding their Fall Seminar on Thursday, September 28, 2000, at the Sedgwick County Extension Education Center, 7001 W. 21st Street North. This all-day event, featuring noted speaker, author, and seamstress **Gale Grigg Hazen**, promises to be exceptional. Please watch for more information about this event in the August/September newsletter.

Grigg Hazen will also be the featured speaker at the Fall Seminar of the Kansas City Chapter of the ASG on Saturday, September 30, 2000.

More details to follow, but mark your calendars now to attend one or both seminars.



Kechi Quilt Shop

7348 W. 21st St. N., Suite 106
Wichita, KS 67205
316-773-0338
Toll Free 877-744-8500

Janet Robinson

NEEDLE NOOK FABRICS

Specializing in Lingerie & Knit Fabrics
Laces • Patterns • Notions • Books • Magazines
2714 Boulevard Plaza
(at 2700 E. Lincoln)
Wichita, KS 67211-3812
316/684-5989
Email ndlnookfab@aol.com

Mon-Fri 10:00am-5:30pm Sat 10:00am-4:00pm

ANNUAL PATTERN SALE

ALL Kwik Sew, Stretch & Sew, Burda
Elan & Timberlane Press

25% OFF

Sale Discount good
June 8, 9 & 10 ONLY
regular price
Books NOT included

In addition to your
regular Guild
Discount of 10%
OFF, get an
EXTRA 10% OFF.
This offer is good
until June 30, 2000.

You MUST Bring In This Ad to
receive the additional discount

WE'RE GROWING!!!**DERBY IS STARTING
NEIGHBORHOOD GROUP**

Not only do we welcome the Hutchinson neighborhood group to the Wichita, Kansas Chapter of the ASG, but we now have a neighborhood group forming in Derby, Kansas.

They held their first organizational meeting on May 18. Ten interested sewing enthusiasts showed up with four already being Guild members.

The group plans to meet the 4th Thursday of each month at the Woodlawn United Methodist Church, Kay and Woodlawn, at 7:00 P.M. Please use the front entrance. The plans and ideas for this neighborhood group were abundant. "Flat Pattern Alteration and How to Use That French Curve" presented by **Malynda Perkins** and **Sue Hunt** is planned for the June 22nd meeting. All current ASG members and interested persons are welcome to attend the Derby meetings. We will publish their upcoming topics to keep you posted. They will be using a team leadership approach, so members of the group will be taking turns leading the meetings. If you have any questions, please contact **Malynda Perkins**, 788-7015 or by E-mail at <malynda@feist.com>.

**BILL'S SEWING MACHINE
SALES & SERVICE**

— Vacuum Cleaners —

Katie & Bill Depew
(316) 669-8695

1-800-371-8695

6411 W. Morgan Ave.
Hutchinson, KS. 675015 Miles SW on 50 Highway
"At PLEASANTVIEW"**Becky Lomasney**126 North Main
Hutchinson KS 67501
Phone 316-662-2245
Monday - Saturday
9:30 - 5:00**COTTONWOOD
QUILTS***fine fabrics, notions & gifts***FCE Spring Tea Fashion Show****ASG Members Volunteer
Their Time and Talents**

April 15 dawned a cool, misty morning, but inside 4-H Hall at the Sedgwick County Extension Education Center all was bright and in full bloom as ASG members took FCE (Family and Community Education Council) members on a journey through fashion at their Spring tea.

Highlights of the garments modeled were recreations of vintage clothing, including a renaissance dress, a 1940's linen-look suit made for a high school graduation, and a black lace and crepe 1920's dress worn to a senior prom. Members modeled garments using fast and easy techniques from the "No Time To Sew" book, garments made using their "Duct Tape Double" dress forms and garments made using techniques they had learned from ASG programs -- such as tube belts and Chinese ball buttons.

Garments spanned all age groups as members showed a christening gown, a maternity dress and a dress made for a special anniversary. Fabrics used were all the way from traditional 100% wool and linen, to the new Moleskin and "Tug-A-Pop" -- a wonderful new cotton and lycra woven fabric with a 25% stretch. Other techniques that were featured on garments by our talented members included twin needle quilting, stippling, machine embroidery and cutwork, hand dyeing and stenciling (*we need to learn more about these techniques*), novelty thread and patchwork embellishment.

ASG models enjoyed brunch with the FCE members and listened to a presentation by Kathleen Kelly entitled "Women Wear Many Hats". Many thanks to all the ASG members who participated or loaned their handmade creations for this event.

Cajun and Creole
Specialties
Great Daily
Specials!For Catering, Carry-
out, and Call Ahead
Seating, Call...

West	East
7447 West 21st Street North	7088 East Kellogg
721-4100	687-1778

September is National Sewing Month**Items Needed for September Display**

As you may know, September is National Sewing Month. Our Guild is doing a display at a local branch of the Wichita Public Library during that month. Please think about some items you would like to loan for this display. If you have something fancy or plain, that showcases a specific sewing technique or is just plain lovely, please contact **Sondra Schmittgens**, 943-9813, and offer it up.

We would like to include your name and a short paragraph about your item in the display. Items will be on display the entire month of September, and all showcases will be locked for safety. Sondra has a list of items from "Show & Share" -- but don't make her beg. Sondra wants to say in advance, "Thank you wonderful Guild members, for participating and making this display educational and enlightening to the public."

- Unique Fabrics
- Sewing Workshop Pattern & Sample Garments
- Large Selection of Specialty Buttons
- Hard-to-Find Notions, Threads and Books
- Sewing Classes
- Authorized Bernina Dealer



10% Discount for Guild Members (reg. priced fabric)

threadwear

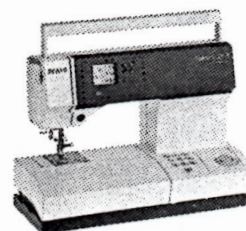
Call for a summer class schedule
Huntoon & Oakley • Topeka, KS 785/235-1552

IF SHE LOVES SEWING, WE HAVE AN OFFER YOU SHOULD LOVE.

Save 25% on all tiptronic machines.

Pfaff tiptronics

Introducing the new mid-priced Pfaff tiptronics, with incredible features at a fantastic price! These beautiful machines were carefully designed to make sewing simple and creative. And, of course, you get the German engineering and quality you expect from Pfaff. You've got to see the versatility, power and huge stitch selection of the new tiptronics for yourself. You can't imagine how much you get for so little.



PFAFF

A-1 SINGER

SEWING CENTER 685-0226

Parklane Shopping Center • 1012 S. Oliver

Free Layaways and Financing Available

SALES & SERVICE 1-800-725-0226

9-6 p.m. Mon. - Fri. • 9-5:30 p.m. Sat.

Supply list for the Tee Shirt Jacket
Each person may choose ONE of the following jackets for their class project!
 Be sure and purchase the largest tee shirt you can, with design
 on both front and back if possible.

#1...THE SHORTIE JACKET' (from the Shortie Jacket Pattern)

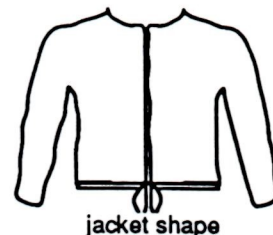
Fabric:

1 1/2 yards of 42" wide fabric This needs to be something that looks good
 with your shirt, in a cotton or cotton/poly.

An small assortment of complimentary fabrics pieces that could be used
 as trim and coordinates well with the above fabric.

2 1/2 yards of a solid color for your lining (this can be the same fabric and
 color as the solid color you are using in your jacket)

NOTE! If you are taller than 5'7", or wear larger than a size 14, I would suggest getting
 at least 2 1/2 yards of your 2 fabrics (feature fabric and lining fabric) to make your
 jacket a little longer. If you are full-figured, try getting a fabric that is 60" wide, instead of 42".



jacket shape

or

#2..The Basic Jacket (from the Basic Jacket Pattern)

Fabric:

1 1/2 yards for your featured fabric (or a combination of fabric you choose)
 and several coordinating pieces (see above)

2 1/2 yards of lining (cotton or poly/cotton is good)



jacket shape

*****In addition to the above, you'll need:**

Batting: A piece approximately 36" x 72" of low-loft quilt batting, or I like to use
 pellow fleece available by the yard, and very inexpensive. Pellow fleece is 45" wide, two yards is
 enough, unless you lengthen your jacket or plan to use batting in your sleeves.

Thread: to match your solid color, and one to blend with your main fabric
 (plus, optional: metallic gold or silver thread for embellishing)

*****You'll also need the following items: which can be shared among several members, rather
 than each person bringing everything on the list:**

Sewing machine Extension cord
 Rotary cutter (small or large) Cutting mat, the larger the better
 Scissors Long pins Needles Chalk markers or disappearing pen
 Iron and ironing mat, or small ironing board — FURNISHED

*****Please note:** This is going to be fun! Come prepared to relax and enjoy yourself. The jacket is easy to make, and you'll
 have a great time designing it yourself, or duplicating one of the ideas from one of the jackets I'll have with me. I am very
 excited about being with you! If you have any questions that have not been answered here, please let your Workshop Chairman
 know so she can get in touch with me, or you may call me directly. I'd love to hear from you.

See you at The Tee Shirt Workshop!

Joyce Livingston, City Lake, Council Grove, KS 66846 Phone 316-767-6875



JOYCE LIVINGSTON T-SHIRT JACKET WORKSHOP

**LEARN HOW TO TURN YOUR FAVORITE T-SHIRT INTO A
BEAUTIFUL QUILTED JACKET!**

WEDNESDAY.....AUGUST 2, 2000

9:30 AM TO 3:00 PM

COST.....ASG MEMBERS.....\$15

NON-MEMBERS.....\$20

Joyce Livingston will present an all day workshop on a unique jacket constructed from a t-shirt. This will be a hands-on class. Each person will furnish her own supplies and a sack lunch. Please check the attached list for what supplies to bring. Patterns will be sold at the workshop for \$8.00 each.

**The workshop will be held at the Sedgwick County Extension Office...
7001 W. 21st Street North. If you are interested, please return the form
below with your enrollment fee to.....**

Sue Carpenter...122 S. Lark...Wichita, Ks...67209.

Seats are limited so please enroll early.

If you have questions, please call Sue at 316-721-7630 or 316-722-7721.

**Joyce was a television broadcaster for 18 years, owned a woman's resale clothing store, and is a wife, mother and grandmother. Since 1990, Joyce has traveled the country, lecturing and teaching. She has published two cookbooks, books on personal color, personal devotions and The Busy Quilters Survival Guide. Her latest venture is a romance novel released in 1999. She is currently at work on several other books while still maintaining a busy lecture and workshop schedule. Her website is....
www.joycelivingston.com.**

NAME _____ **PHONE** _____

ADDRESS _____

AMOUNT PAID _____

VIDEO VAULT

"Color Confidence" by Jinny Beyer

Reviewed by Sondra Schmittgens, Guild Secretary

This video is really great for people who are not very comfortable with color or for anyone who is trying to learn how to use colors more effectively.

Beyer's method of finding pleasing color combinations is based on shading from one color to the next. With the use of her "Jinny Beyer Portable Palette," she shows you how you can go from one color to any other color no matter how different they are. This does not mean you need to use every color that you have shaded within your final project. But, even if you do use many colors they do not need to shade, in order, in your garment or quilt.

Beyer also shows you how to pick a whole array of colors using one "theme fabric" as a base and how to enhance visual texture.

She covers how to work with color in quilts, knitting and even home decor. Some of you may know how to do this naturally without thinking but, even if you do, it often helps to know the conscious process. I really enjoyed this video and recommend it highly.

Fashion Fabrics

Large Selection of Calicos

Poly and Cotton Batting

Notions

Threads Embroidery, all purpose and quilting
Rayon, Poly, and 100% Cotton
Most Brands in stock

Classes in Garment Making and Quilting

Large selection of parts

New & Used Machines

We repair all Brands

The Sewing Center

SINGER
Authorized
Dealer

2101 W. 21st St.
Wichita, KS 67203

(316) 832-0819

sewbiz@feist.com

ELNA
Authorized
Dealer



OUR CHAPTER LIBRARY

Summer is a great time to check out books for reading on vacation, long weekends, or while waiting for the kids at baseball practice, swimming lessons, etc.!

Library items checked out at one month's meeting are due back at the next month's meeting. If you do not return the items in this one month period, you will be fined \$1.00 on magazines and \$5.00 on videos and hard cover books.

Have you checked out a book or video and want to tell the world about it? Then write a brief review and send it to **Marcia Davis**, Newsletter Editor. (See address on page 2.)

Flag Day - June 14

On June 14, let us take a few minutes to honor our "Star Spangled Banner" and remember the reason behind our flag, as well as **Betsy Ross**, the seamstress who is reputed to have made the first official flag (*imagine how much easier her job would have been with the machines and notions of today*).

The first official flag of the U. S. was created by Congress on June 14, 1777. It consisted of 13 alternate red and white stripes and 13 white stars in a field of blue, representing the 13 colonies that had declared their independence in 1776. It became apparent that adding one stripe for each new state the shape of the flag would be destroyed. As a result, Congress in 1818 restored the original design of 13 stripes and provided that each state was to be represented by one star. In 1912, President William H. Taft made the first official provision for the arrangement of the stars. Previously the arrangement of the stars had been left to the flagmaker's fancy. The last star of the present day flag was added in 1960 when Hawaii became the 50th state. The colors are symbolic of Purity and Innocence (White); Hardiness and Valor (Red); and Vigilance (Blue). The colors, the stripes and the stars were set as standards by Congress in 1818.



FLAG DAY



Colonial Flag or
"Betsy Ross Flag"



Today's U.S. Flag
with 50 States

HOW DOES YOUR GARDEN GROW?

Reprinted from Martha Stewart's "Ask Martha"



Weeding and thinning are hard work, and knees suffer during these necessary garden tasks. Make the job more pleasant with a homemade knee pad filled with buckwheat hulls.

You will need a 12-by-36-inch piece of sturdy, water-repellent fabric (such as Sunbrella). Fold in half widthwise, with right sides facing; pin a pair of 12 inch elastic loops into the seam opposite the fold. Sew seams in side with loops and one adjacent side; turn right side out.

With a pencil and ruler, draw lines parallel to the fold and 1½ inches apart for the length of the pad. Topstitch the lines, creating hollow partitions. Using a funnel, fill the partitions with buckwheat hulls, then slipstitch the last side closed. The elastic straps allow the knee pad to be rolled up securely for easy storage.

Buckwheat hulls are available from James Farrell and Co., 506 Second Ave., Smith Tower, 31st Floor, Seattle, Washington 98104; (206) 623-1993.

CHECK YOUR FABRIC KNOWLEDGE

Match the fabric on the left with its description on the right.

- | | |
|-------------------|--|
| 1. Charmeuse | a. Heavy, sturdy fabric for aprons, also used for interfacing. |
| 2. Pongee | b. Transparent, similar to cotton organdy. |
| 3. Tussah | c. Plain woven tan fabric, rough weave. |
| 4. Butchers linen | d. Created from innermost part of the cocoon. Looks like hopsack, but is much softer. |
| 5. Matelasse | e. Jacquard weave with embossed effect. |
| 6. Organza | f. Satin weave with crepe back. |
| 7. Noil | g. Fine damask with large floral patterns. |
| 8. Venise | h. Stout, soft with fine ribs. |
| 9. Brocade | i. Raised woven design, appears quilted. |
| 10. Peau de Soie | j. Plain weave from "wild" silk worms. Uneven surface and color. Also called raw silk. |

(Answers on page 11.)

Experience "Sew Beautiful"

Join
Southend Sewing Center
And
Jody and Debbie

For the
SEW BEAUTIFUL
Martha Pullen Heirlooms
With Husqvarna Viking
A four day Sewing Retreat



During this four day, sit and sew school, you'll learn techniques for sewing beautiful heirloom quality garments by machine, and even on the serger! You'll learn tips to make it so easy, you won't believe it!

Dates: October 4, 5, 6, 7, 2000

Time: 9:00 am to 4:00 pm

Location: Hotel at "Old Town", 830 E. 1st, Wichita, Kansas

For more information and to make you reservations call Deanna at 262-6221 or toll free at 1-877-768-8436



Rice Heating Bags = Relaxation

Adapted from Stitch 'N Times, Kansas City Chapter, May/June 2000

With summer gardening, sports and more outdoor activities, an ideal gift for Father's Day might just be a rice heating bag. These bags are filled with rice or other grain (See

Editor's Note below.) and heated briefly in the microwave for a wonderful neck relaxer.

SUPPLIES:

- 7" x 11" bag lining, 100% cotton fabric like muslin
- 7 1/2" x 12" bag cover fabric
- 2 cups long grain white rice
- Ground scent like cinnamon, cloves, etc.
- Velcro (optional)

INSTRUCTIONS:

The dimensions for a rice heating bag are 7" x 11", cutting one long edge on the fold to eliminate a seam. The bag that the rice goes in must be 100% cotton. Inexpensive muslin, for example.

Sew one end seam and the long edge using a 1/2"

seam allowance. Fill each bag with 2 cups of long grain white rice. You can add ground scents like cinnamon, cloves, etc. Then sew the remaining end or finish with Velcro, so you can refill the bag if the rice gets old.

The outer cover can be made of any fabric, however, you might want to use 100% cotton fabrics, just in case someone forgets and puts the entire bag and cover in the microwave. Cut the rice bag cover 7 1/2" x 12", one long edge on the fold, again to eliminate the seam. Turn down one short edge 1/2" and sew down, after having serged all unfinished edges. Sew one edge and the long edge. Turn and slip the rice bag into the cover.

Editor's Note: My oldest daughter received one of these bags as a gift last Christmas. It was filled with field corn instead of rice. She used it as a bed warmer and loved it. As microwave ovens vary on wattage, you must experiment with your own oven to determine the setting and time to heat the bag. As a bed warmer, my daughter heated hers on "High" for five minutes. She reminded me that she uses tongs to remove it from the microwave and place it in her bed. As a muscle relaxer, try heating for one or two minutes, and be careful to "touch test" before grabbing the bag.

Quilt Company
Q

Fabric-Classes-Books-Patterns-Notions

P.O. Box 973

"Where Friends Gather"

618 N. Andover Rd.

Andover, KS 67002

Ph: 316-733-7366

Hours

Mon-Sat 9-5:30

Sun 1-5:00

Owner Audrey Wright

Soya's
Couture
Designs

FABRIC LIQUIDATION SALE

End bolts of designer fabric
some laces - 20% & More
off regular price*

*must take entire piece at these prices

- Model Garments
- Jewelry & Accessories
- Custom fit Bras

20 to 75% OFF

2724 Blvd. Plaza
(316) 687-5700

QUILTING SUPPLIES
FABRIC, BOOKS,
QUILT AND CRAFT PATTERNS



CHRISTMAS ROOM
OPEN ALL YEAR
ANTIQUES, GIFTS
MUFFY VANDER BEAR

Gramma's Calico Cupboard

1945 S. HYDRAULIC
WICHITA, KANSAS 67211

BETTY WEBB

OPEN MON-SAT 9:30-5:00

Telephone:

(316) 264-0274

McCray Retires**After 25 Years of Teaching Area Residents to Sew**

by Chris Ealy, ASG Chapter Member

After 25 years of dedication to sharing the art of sewing with others, **Norma McCray** retired from the Sedgwick County Extension Education Office recently. She had hoped to slip out the doors quietly with dignity, but a group of her former students and friends would not hear of it. On April 24, during the lunch break for the Monday open-sew class, Norma was given a surprise potluck farewell luncheon. As she was helping with assorted sewing problems, many people were sneaking in food and hiding in the 4-H Hall right across from her. Invitations and word of mouth had been passed around for nearly two months and Norma never found out. When escorted to the 4-H Hall, she was

absolutely caught unaware. Norma dined on two tables of assorted dishes (*she did leave some for the others*), unwrapped gifts and opened cards.

In her farewell speech to the room she mentioned that she is a better giver than a receiver and "you have to really love sewing to do it five days a week."

Anyone that has had the opportunity to be with Norma McCray will have to agree with her. Her wisdom and wit will be greatly missed at the Extension Education Office classes, but we wish her all the best -- may her scissors always be sharp and her fabric stash abundant!!!

**The Raddison
Branson, Missouri**

*Ozark Sewing
and Craft Expo*

September 2, 3, & 4

- Designers from across the U. S. and Canada.
- 30+ classes daily only \$5.00 each.
- For more information e-mail: Ozarkexpo@juno.com

**SUMMER PICNICS
SUMMER FUN!!!**



**ANSWERS TO:
CHECK YOUR
FABRIC KNOWLEDGE**
(See page 11.)

- | | |
|-------|-------|
| 1. f. | 6. b |
| 2. c | 7. d |
| 3. j | 8. g |
| 4. a | 9. e |
| 5. i | 10. h |

Lasting Gifts



CUSTOM SHADOW BOXES

Bring in those special awards or personal theme items and we will create a custom shadow box. The Perfect Gift

CUSTOM FRAMED ART

We can custom frame your art, prints or photos; or select one of ours.

• **GARDEN STEPPING STONES**

• **STAINED GLASS GIFTS**

• **GIFT CERTIFICATES**

ASK ABOUT OUR CLASS SCHEDULES



**DEFFENBAUGH'S
DESIGNS**

1001 N. Buckner • Derby • 789-0094
Just South of First National Bank

Part I: Just How DO Those Feet Work?

by Malynda Perkins, Publicity Chairman

Just how do those feet work? On Saturday, February 26, at the Johnson County Community College, the Kansas City American Sewing Guild invited **Becky Gilbert**, a PFAFF Educational Consultant to teach participants the answer to just that question. Gilbert has been sewing most of her life -- taught by her mother. Sewing was functional, she made the clothes she wore to school. When she bought her first machine, she was wowed by her first "interchangeable feet" and then set them aside. She was not taught how to use the extra feet, and so they sat until she traded her machine in for another.

Gilbert began to work for a PFAFF dealer, was sent to "school", and found out many answers about

her machine to teach to others. This is where she learned to actually turn each foot over and examine it. If a foot is designed to construct garments, it should be flat on the bottom to help keep an even tension on the fabric for a good flat seam to form. If the foot has grooves or a cut out portion under the foot, then it is to accommodate speciality threads or sewing techniques such as satin stitching.

Gilbert demonstrated how to use several of the feet that came with her PFAFF 7570 as well as several of the accessory feet available. They were:

Narrow Hem Foot:

Gilbert used the narrow hem foot that came with her machine to turn under a 1/4" seam by threading a "tail" through the foot and slightly pulling

or stretching the fabric as it fed through the machine. Her PFAFF has 19 needle positions, so she can put the stitched seam just to the right of the turned edge making a truly professional looking hem.

The Blind Hem Foot:

Gilbert suggested to try feet for different applications. She illustrated this by using the blind hem foot with the overlock stitch. When she used the blind hem foot and adjusted the needle to swing over the wire in the foot, knits would stay flat and not pucker. This created a professional looking finish comparable to a serged edge. *To be continued...*

(Part II of "Just How DO Those Feet Work?" will appear in the August/September issue.)

FIBER TO FASHION IN A FLASH!

Quality Affordable Knitting
Machines

K.N.I.T.S. etcetera

956 S. Oliver (Parklane)
Wichita, KS 67218
316-652-0073

A hand and machine knitting shop!

Hand/Cone Yarns: Adhac, Adriafl, Austerman, Brown Sheep, Cleckheaton, Filatura DiCrosa, Forsell, Fortissima, Gjestal, Indiecita Alpaca, LeFibre Nobili, Silk City Fibers, Tahki/Stacy Charles, Stahl. **Needles:** Addi Turbo, wood/bamboo. **Knitting Machines:** Artisan, Brother, Passap. Lessons, seminars. Blocking. Professional finishing. Buttons. Machine-knit fabrics.

MIDWEST SEWING & VACUUM CENTER

Official Sewing & Vacuum Center of Kansas

"WHERE PEOPLE DEAL WITH PEOPLE"

Authorized Dealer For

Bernina • New Home • Bernette • Baby Lock

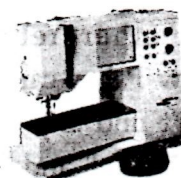
KANSAS' NUMBER 1 DEALER

Bernina • New Home • Bernette • Baby Lock

Sales • Service • Repair • New & Used

Free Estimates

Necchi • Dressmaker • Nelco • Elna
Riccar • Husky Lock • Singerlock • Viking
Superlock • Kenmore • Pfaff
Industrial Machines • Quilting Machines
Koala-Roberts & Parsons Cabinets, Dealer



Specializing In:

INDUSTRIAL MACHINES AND REPAIR

**Monday-Friday 9-6
SAT 9-5**



262-3438

**Monthly
Payments Avail**

800-848-6729

44 Years In The Same Location

111 Pattie (Corner Pattie & Douglas)
3 Blks East of Old Town



**Simplicity-
The Clean Air
Machine**



Hutchinson Neighborhood Group

The Hutchinson Neighborhood Group recently held a "Jam Session" to plan their programs for the year. This group meets in Hutchinson the first Thursday of the month usually* at the First Presbyterian Church, Sherman & Walnut, at 7:30 P.M. Meetings are held in the church's parlor, so please use the west entrance. Upcoming meetings are:

Thursday, June 1

Quick Alteration Techniques

Thursday, July 6

Photo Transfer to Fabric

*NOTE: Meeting held at
916 E. 8th St.
7:30 P.M.

Tuesday, August 1

Members will car pool
to Wichita for the
Joyce Livingston Trunk Show
(Details to be announced!)

For more information about the group or its meetings, contact **Marion Whitlock**, former ASG Chapter President, (316) 669-9002.

Two From Wichita Attend Regional Meeting

Denise Dias and **Shirley Binder**, President and Vice President of the Wichita, Kansas Chapter of the ASG, recently took a road trip to attend the Central Regional Meeting of the National ASG. The meeting was held in St. Louis, Missouri, on May 20.

ASG Board members from a variety of states (Oklahoma, Kansas, Minnesota, Ohio, and Texas--to name a few) kicked around ideas on membership, Board positions, and strengthening the Guild as a whole. These regional meetings are expected to become an annual tradition.

Ask Denise and Shirley about this trip. We understand they stopped at a few fabric shops while on the road, but they only came home with one pattern between the two of them. *Of course, that's a whole other story!*

A Hundred Years Ago

From the book, When My Grandmother Was a Child
by Leigh W. Rutledge, which begins,

"In the summer of 1900, when my grandmother was a child. . .

The average life expectancy in the United States was 47.

Only 14 percent of the homes in the United States had a bathtub.

The average wage in the U.S. was 22 cents an hour. The average U.S. worker made between \$200 and \$400 per year.

Most women only washed their hair once a month and used borax or egg yolks for shampoo.

Some medical authorities warned that professional seamstresses were apt to become sexually aroused by the steady rhythm, hour after hour, of the sewing machine's foot pedals. They recommended slipping bromide—which was thought to diminish sexual desire—into the women's drinking water.

*Celebrate the Land
of the FREE
and the Home
of the BRAVE...*



PRAIRIE POINTS FABRIC'S ANNIVERSARY SPECIALS!

25% OFF
Kwik Sew Patterns
Zippers
100% Cottons

Special Orders Welcome
Books-Patterns-Notions
Silks-Lace

OPEN 9-6 M/SAT
6 S. Main
Hutchinson
665-0900

Select Knits \$2.00
Ribbed Knits 50% off
Satin(45" ROT) \$2.49
45" Muslin \$1.69
Lace BTY 6/\$1.00

**In Store
Specials
Daily Drawings
Grand Prize:
Basket of
Sewing Goodies**

"CARING STITCHES"
Sat. May 20, 2000
Join us for a day of sewing
new-born gowns-special
need
adult clothing-turbans
Bring your machine &
scissors
for an afternoon of
fellowship
Your donations will help
benefit
needy families, young & old

www.angelfire.com/ks2/prairieptsfabricllc