

# DREAMS and SEAMS

American  
Sewing  
Guild

Vol. 3 No. 1

American Sewing Guild -- Wichita, Kansas Chapter

February/March 2001

## Words of Wisdom

### *A New Year With New Challenges*

*By Denise Dias, Chapter President*

Happy 2001! I hope everyone has recovered from the Holidays and has set their sights on new sewing resolutions and projects for 2001. I finished many projects over the Holidays and am ready to start something new.

Several officers thought it was time again for another sewing challenge. Are you game? I think this time we will try one suggested by our witty secretary, *Sondra Schmittgens*.

Here are the rules for the **JAZZED-**

**UP JEAN CHALLENGE!** You can make anything you want, but you need to use a pair of recycled jeans and one other fabric. Your garment must contain at least one zipper and fly section of the jeans in the project. Be creative and you could win a special prize. *(I'm sure I can talk the other officers in to finding another awesome prize for our winner!)*

You are not limited on the number of entries that you have, but they need  
*(Continued to page 7.)*



#### *Our Next Chapter Meetings:*

### **FEBRUARY**

**Tuesday, February 6**

**"Seasonal Decor"**

presented by *Lois Klepper*,  
Needle in a Haystack

### **MARCH**

**Tuesday, March 6**

**"Quilted Garments"**

presented by *Audrey Wright*,  
The Quilt Company

## Featured in December & January

### *Holiday Party and Stained Glass Wallhangings*

Merriment and laughter were abundant at this year's annual Holiday Party. ASG members gathered and shared a cup of Christmas tea and tasty homemade treats. Business was kept to a minimum and officers were installed for 2001. Several talented officers sewed and stitched a denim shirt with applique embellishment for *Denise Dias* as a "Thank You" for serving as president for the past year.

The highlight was the gift exchange. Gifts were dispersed by alphabetical --first name--order. The evening group got very mischievous and swapped and stole their way through the gifts. *(That group often gets out of control!!!)* Everyone enjoyed their time together and shared wishes for the best in the New Year!

January's meeting was to be presented by *Debbie Short* of Midwest Sewing and was to feature

"Stained Glass Wallhangings". Due to a death in Debbie's family, *Becky Wondra* and *Belle Gray* stepped in to show Debbie's and their own wallhangings as well as talk about the steps and tips you follow to put these beautiful decor pieces together. The pieces were intriguing and really got our creative juices flowing. Thanks to *Becky* and *Belle*, and our sincere sympathy to *Debbie Short* and family.



## Getting To Know You. . .

Marion Whitlock, Hutchinson Neighborhood Group Chairman (Interviewed by Chapter Secretary Sondra Schmittgens): **Marion Whitlock** is the Chairman of our Hutchinson Neighborhood group. She has lived in Kansas her whole life and in Hutchinson for 35 years. She is married to her truck-driver husband **Lynn**, and together they have 8 children, 14 grandchildren and 2 great-grandchildren! A lot of sewing opportunities there!

Marion was taught to sew on a treadle machine by her mother who was a very accomplished seamstress. Sewing was required in the schools when she was growing up and she learned from a very good seamstress there, too. She became interested in gowns and formal wear when she had to alter one of her daughter's store-bought gowns. This inspired her to take two classes from the Bridal Sewing School in Baltimore and she now has her own business sewing bridal gowns called **Thee and Me**. She has been in business full time since 1994. One of her gowns appeared in 1999 on the TV show "The Wedding Story" on the TLC network. Marion says that sewing bridal gowns is not really harder than anything else – just a lot more fabric.

Marion says her biggest challenge in sewing is pricing. Most people come to her because they can't find what they want off the rack but they still expect a bargain if it is hand made. Marion says, "Sewing is really an art". She explains to her clients the benefits of a perfect fit, quality construction and one-of-a-kind style in the custom garment. "I enjoy sewing. I'm the happiest when I'm sewing and surrounded by my fabrics. My family accepts that as a big part of our life," says Marion.

The Five Questions: *Q: Do you prefer linen or Perma-press?* **A: Oh, linen!**  
*Q: If she must choose between eating chocolate or sewing?* **A: Chocolate!**  
*Q: Do you always backstich?* **A: Depends on the garment. But no, I usually do a machine knot so that the fabric doesn't wad up.**  
*Q: Vogue or Butterick?* **A: Vogue.**  
*Q: Your favorite sewing tool?* **A: My mother's sterling silver thimble.**

(Continued to page 4.)

### ADVISORY BOARD:

**President:** Denise Dias  
 794-2533 (H), 722-7721 (W)  
 E-mail: ddias@oznet.ksu.edu  
**Vice President:** Shirley Binder  
 943-5063 (H), 684-5855 (W)  
 E-mail: sbinder@fn.net  
**Secretary:**  
 Sondra Schmittgens, 943-9813  
 E-mail: aslcouple@gateway.net  
**Treasurer:**  
 Barbara Blackman, 721-5524  
 E-mail: bblackman@kscable.com  
**Librarian/Historian:**  
 Pat Schwening, 773-6304  
 Sandra Zernickow, 773-5953  
 E-mail: SandPatti@aol.com  
**Membership Chairman:**  
 Malynda Perkins, 788-7015  
 E-mail: malynda@feist.com  
**Newsletter Chairman:**  
 Marcia Davis, 686-4854  
 E-mail: Gbmhh@aol.com  
**Education Chairman:**  
 Becky Wondra, 722-0939  
 E-mail: rwondra@aol.com  
**Community Service Chairman:**  
 Linda Parks, 733-5934  
 E-mail: lindaparks@aol.com  
**Publicity Chairman:**  
 To Be Appointed  
**Retail Liaison Chairman:**  
 Feryl Giesen, 721-4178  
 E-mail: bfgiesen@swbell.net  
 Anne St. Clare, 684-5989 (W)  
 E-mail: needlenookfab@aol.com  
**Special Events Chairman:**  
 Sue Carpenter, 721-7630  
 E-mail: sewlady@kscable.com  
**Hospitality Chairman:**  
 Aletha Van Camp, 943-0394  
 E-mail: vancamp3@juno.com  
**Neighborhood Groups Liaison:**  
 Carol Wiens, 788-4448  
 E-mail: jackw@southwind.net

## PRAIRIE POINTS FABRIC

**NEED A NEW  
SPRING OUTFIT ?**

**BEADING  
CLASS**

**browse through our Challis  
and Linens for the perfect  
look with a Kwik Sew  
Pattern**

**Challis & Linens 40% off  
Kwik Sew Patterns 30% off  
(pattern discount ASG only)**

**Special orders welcome  
Quilt Books, Patterns &  
Fabrics**

**OPEN MON-SAT 9 AM - 6 PM 663 - 0900  
6 SOUTH MAIN HUTCHINSON  
www.angelfire.com/ks2/prairieptsfabrilc  
e-mail ppflc@ourtownusa.net**

**Feb.1st 7pm  
during the  
ASG meeting  
March 3rd 1pm**

**Let Deb show  
you how  
to bead your  
projects!**

**CARING STITCHES  
3rd Sat of each month  
Items sewn are donated  
to local charities**

### ADVERTISING RATES

Ad rates for our bimonthly ASG Newsletter will be as follows:

Inserts (one sheet-8 1/2" x 11") . \$30  
 Inserts with multiple sheets  
 are priced by weight.

Full Page . . . . . \$50  
 1/2 Page . . . . . \$35  
 1/4 Page . . . . . \$20  
 Business Card . . . . . \$10  
 Classifieds . . . . . 10¢ a word

The Deadline for the April/May issue will be February 27. Send or give your info. in writing by that date to: Marcia Davis, 1020 N. Pinecrest, Wichita, KS 67208 or E-mail: <Gbmhh@aol.com>



## ASG BUS TRIP

We still have a few empty seats for our Bus Trip on Friday, February 23, 2001. We will be visiting Charlotte's Newton, The Quilting Bee in Salina, The Buttonhole in McPherson, and Cottonwood Quilts in Hutchinson. Lunch will be at the Swedish Crown in Lindsborg. Cost of this trip will be \$20 per person for the day. Your lunch is at your expense and will be at the Swedish Crown in Lindsborg. If you have friends who would like to join us, please call them. If you need an application or would like more details, please contact *Sue Carpenter* at 721-7630 (home) or 722-7721 (work).

## Member-Get-A-Member Contest on National and Local Level

In conjunction with the *Member-Get-A-Member* drive that is being sponsored nationally by ASG, the Wichita Chapter will be rewarding a member who sponsors the most new members at the local level with a one year membership extension. Keep a list of the people you sponsor and turn them in to the Board Membership Chairman.

The contest runs for ten months from September 1, 2000, to June 30, 2001. So... gather all your sewing friends and bring them to ASG. Help them fill out a new membership form being sure to include your name and membership number as their sponsor. Pick up some new membership forms at our next meeting. A 2nd and a 3rd place prize will also be awarded.

The **Home Sewing Association (HSA)** will be hosting a reception at the ASG annual conference in Birmingham, Alabama, for all those who participate in the *Member-Get-A-Member* drive this year and recruit at least one new member. Member recruiters who are at the conference will find a special invitation to the reception in their on-site registration packet. All who attend the reception will receive a lapel pin which signifies their contribution to the membership drive. If you recruit at least 5 new members, you'll receive a specially designed "sewing friends together" lapel pin.

The Board of Directors of HSA have decided to hold their summer Board meeting at the site of the ASG conference, specifically so they can attend the reception and personally thank those who participated in the membership campaign. It should be an event to remember!

## SELECTED STITCHES FROM THE DERBY NEIGHBORHOOD GROUP

The Derby Neighborhood Group meets on the 4th Thursday of the month at Woodlawn United Methodist Church, in Derby Kansas. The schedule for Spring 2001 is as follows:

**February 20, 2001** (Note Date Change)

"Knits, What Are They, and How Do I Sew With Them" at Needle Nook fabrics

**March 22, 2001**

Fabric Dying by Guild member *Carol Weis*

**April 26, 2001**

Charity Project

**May 24, 2001**

Video by Margret Islander

Everyone is welcome to attend the Derby Neighborhood Group's meetings. Reservations are not required except where requested. All you have to do is go to the south entrance of the Woodlawn United Methodist Church at Kay and Woodlawn, Derby, Kansas and follow the signs to room 11E. Please come and join the fun. For more information call *Malynda Perkins* at 316-789-9600 or <malynda@feist.com> or *Teresa Norris* at 316-789-0148.

## Free Scissors Off The Web



**Fabric.com** (also known as Phoenix Textiles) is offering each member of ASG a free pair of 3 1/2" WISS embroidery scissors.

To receive the free scissors, type the letters ASG into the coupon code section of the order form. The minimum order is \$10.00 and any order of that amount or more will receive the free WISS scissors (limit of one pair per customer). When ASG is typed in, the order will show a \$.01 discount, which lets Fabric.com know to include the free WISS scissors.

Fabric.com is known for superior quality fabrics, incredible prices and outstanding customer service. They offer a 100% money-back guarantee of satisfaction. If you do not like anything you purchase from them, FOR ANY REASON, they will give a full refund (including freight).

Currently, this special offer was extended from the end of the year 2000 to February 28, 2001, due to high demand!!! Let's let this retailer know the power of ASG. This is an excellent opportunity for a retailer to be able to track how many ASG members shop with them. Stand up and be counted!



## ☑ Mark Your Calendar

**Becky Wondra**, our Guild's Education Chairman, has announced some exciting programs for 2001. All meetings will be held the first Tuesday of the month at the Sedgwick County Extension Education Center, 7001 W. 21st Street North, at 1:30 and 7:00 P. M.

### February 6, 2001

Seasonal Decor

Presented by **Lois Klepper**, Needle in a Haystack

### March 6, 2001

Quilted Garments

Presented by **Audrey Wright**, The Quilt Company

### March 30 & 31, 2001

Fabric Swap

### April 3, 2001

Speciality Threads

Presented by **Beth Beltz**, A-1 Sewing Center  
and **Shirley Binder**, Prairie Quilts

### April 16, 2001

Duck Tape Double Workshop

### May 1, 2001

Draping Patterns on Your Duck Tape Double

If you know of someone who would be interested in presenting a program to our Guild, please let Becky know.

Singer Approved Dealer	Brothers Approved Dealer	Pfaff Approved Dealer
		
<b>Dan Beltz</b> Sales and Service 316-685-0226		
Park Lane Shopping Center 1012 S. Oliver Wichita, KS 67218 (800) 725-0226		

## Prairie Quilts



1010 S. Oliver, Wichita, KS 67218  
email: quiltsfun@prairiequilts.com  
www.prairiequilts.com

**Shirley Binder - Owner**      **316-684-5855**

## THE SEWERS ALPHABET

from "Fabric Bolt"- Jan/Feb 2001, Rochester, NY Chapter

**A**gain... I sewed it backwards again!  
**B**aste... you've got to be kidding  
**C**redit Card... great sewing tool  
**D**oes... it have to be ironed?  
**E**ase... size 14 lady in a size 12 pants.  
**F**abric... a non-fat weakness  
**G**ee... why did I buy this fabric?  
**H**em... straight is good  
**I**deas... come by the yard  
**J**azzy... can be just a button  
**K**not... small, please  
**L**ove... to wear what you sew  
**M**anikin... does it have to be my size?  
**N**ever enough... can be **C, E, F, Q, R, I, Y**  
**O**ften... when you'd like to sew  
**P**attern... bless the good ones  
**Q**uiet (and peace)... see **N**  
**R**oom to sew... see **N**  
**S**ize... can vary from top to bottom  
**T**ime to sew... see **N**  
**U**gly... avoid this  
**V**ery ugly... avoid this too!  
**W**earable... the ultimate goal  
**X**act... well we try  
**Y**ards... see **N**  
**Z**ig... companion stitch to zag

## Getting To Know You. . .

(Continued from page 2.)

Get to know **Marion Whitlock** (316-669-9002) at the Hutch Neighborhood Group meetings on the first Thursday of the month! They meet in the Parlor of the First Presbyterian Church, Sherman & Walnut, at 7:30 P.M. Please use the west entrance. Upcoming meetings:

### March 2-3, 2001

All night "Sew-a-thon"

### April 7, 2001

Field trip to the Buttonhole fabric shop  
and related stores in McPherson, KS

### May 3, 2001

Planning Picnic

## carolyn's corner

ANTIQUES  
HAND-MADE RUGS  
RAGS FOR RUGS  
CRAFTS

CUSTOM ORDERS WELCOME

LESSONS AVAILABLE WITH MATERIAL PURCHASE

CAROLYN ANDERSON  
(316) 687-6927

1938 SIEFKIN  
WICHITA, KS 67208



## APPLAUSE AND ACCOLAIDES

African American, **Sarah Boone**, invented the ironing board on December 30, 1887. She received a patent (U.S. Patent #473,653) on April 26, 1892, for a device which would help to neatly iron clothing. This device, the predecessor to our modern ironing board, was made of a narrow wooden board, with collapsible legs and a padded cover and was specifically designed for the fitted clothing worn during that time period.

Prior to her invention, people were forced to resort to simply using a table or being creative in lying a plank of wood across two chairs or two small tables for ironing.



## Membership to ASG Pays In So Many Ways

Many of you may not be aware that as ASG members you receive book discounts from two different publishers. **Taunton Press** gives members a 42% discount plus shipping on all their books and magazines for an order of 10 or more. **Sterling Publishing**, which recently acquired *Lark Books*, *Folkwear Patterns*, and *Fiberarts Magazine* gives members 50% off plus shipping if we order five or more.

How do **YOU** take advantage of these offers? Come to the meeting and look at the catalogues or call **Sondra Schmittgens** at 943-9813 or e-mail her at <aslcouple@gateway.net>. Sondra will get the name and ISBN of the book you want and call you for a check when she has enough requests to place an order.

**Expect The Unexpected"**

**BUTTON HOLE** Fabrics - Over 5000 Bolts  
Silks • Wools • Cottons  
Blinds • Linens • Ultra Suede  
More Than 2500 Square Feet

- Classes • Notions for all types of sewing
- Bridal Fabrics • Butterick Patterns & Quick Sew
- Wide Selection of gifts including soaps, hand creams and other gifts for those who sew
- Gift Certificates

**241-5257**

Fax 241-5234 • e-mail buttonhole@iolks.com  
102 S. Main - McPherson

## Swap Meet 2001

This year's Fabric Swap will be held the weekend of March 30 and 31, 2001, and is turning out to be quite a production. Hours of operation will be from noon until 8:00 P.M. on Friday and from 9:00 A.M. until 2:00 P.M. on Saturday. In addition to our regular fabric sales, we will have the **Sulky Trunk Show** available for viewing. These are garments made by individuals and entered in a nationwide contest sponsored by Sulky threads. Also at various times throughout the day, we will be having demonstrations by various individuals on different subjects such as machine embroidery, hand embroidery, heirloom sewing, smocking, and many more. If you would like to present a demonstration on some subject, please call. We always have room for more.

Come and join us for a fun time and some great bargains. If you are considering renting a space from us, please call **Sue Carpenter** at 721-7630 (home) or 722-7721 (work). She will be glad to send you an application. Cost of a 10' X 10" space is \$20 or \$15 if you are an ASG member. This space includes one 8 foot table and 2 chairs. So if you want to clean you closets and enjoy doing it, come to our Swap Meet in March.

### Fashion Fabric Sales

### Large Selection of Calicos

### Poly and Cotton Batting

### Notions

**Threads** Embroidery, all purpose and quilting  
Rayon, Poly, and 100% Cotton  
Most Brands in stock

### Classes in Garment Making and Quilting

Large selection of parts  
New & Used Machines  
We repair all Brands

## The Sewing Center

SINGER  
Authorized  
Dealer

2101 W. 21st St.  
Wichita Ks 67203  
(316) 832-0819

ELNA  
Authorized  
Dealer

sewbiz@feist.com





## SPRING HAS SPRUNG!!!

Here's the Spring 2001 fabric and color forecast according to the Kwik Sew Pattern Co., Inc.:

### SPRING 2001 FABRICS

Shine is the key word for Spring 2001. Fabrics are metallic, iridescent or laminated and coated. Denim looks stronger than ever -- in colors, as well as black and white.

Soft and drapery fabrics like matte jersey work in tops, skirts and dresses. Sheer goes forward, particularly chiffon for blouses and dresses. Other important fabrics include lace, eyelet, voile, mesh and satin.

### SPRING 2001 COLOR

Black and white are representative of a more ladylike, refined way of dressing. Following those are the metallics of gold and silver, the nude family from wheat to brown, greys from deep to pale and newly present navy.

Bright colors include pinks and reds (some mixed together), lavender and mauve and touches of yellow from bright to pale.

Kwik Sew's new spring patterns are on their website!! For a peek, check them out at: [http://www.kwiksew.com/Patterns/\\_Spring/Frame.htm](http://www.kwiksew.com/Patterns/_Spring/Frame.htm).

### Words of Wisdom

#### *A New Year With New Challenges...*

to be completed, brought to the Extension Office, and entered in the contest by April 2. If you are like me, you will be sewing on April 1st like a mad "person", trying to get your entry done in time! The challenge has been issued, and now it's up to you to use your ingenuity to meet the challenge. Good Luck and... Happy Sewing!

Denise

## Supporters We Can Count On

Following is a list of retailers, and the discounts they offer to ASG members on regularly priced fabric and notions.

Remember, to receive your special ASG discount, show your membership card at the cutting table, when purchasing fabric or at the cash register, before purchases are entered.

#### Receive a 10% discount at:

Hancock Fabrics -- East / West  
JoAnn Fabrics - All locations  
Needle Nook Fabrics - Blvd. Plaza  
Prairie Quilts - Parklane  
Sew-N-Sew - El Dorado, KS  
The Sewing Center - W. 21st St.

#### Receive a 15% discount at:

A-1 Sewing Center - Parklane  
The Button Hole - McPherson, KS

#### Receive a 20% discount at:


Southend Sewing  
(new vacuum cleaners and sewing machines not included)

## Board Bits

Due to the holidays there was no Board meeting in December. Prior to the regular monthly evening meeting in January both the outgoing and newly elected Board members met at Piccadilly Grill's west location for dinner. Everyone enjoyed the food and fellowship.

The January Board meeting was held January 23, 2001, at 1:30 P.M. at the Extension Office. Final plans were discussed for Clotilde's seminars on January 24. **Barbara Blackman** picked **Clotilde** up from the airport and brought her to the meeting. Among other items we discussed the bus trip, the fabric swap, and getting Chapter shirts. Watch for more details.

Please remember that Board meetings are open to all members.



## Kechi Quilt Shop

at Reflection Ridge Plaza  
Monday-Saturday 10:00-5:00  
Thursday 'til 8:00  
Sunday 1:00-5:00

7348 W. 21st St. N., Suite 106  
Wichita, KS 67205  
(316) 773-0338  
Toll Free 877-744-8500  
Janet Robinson

### HEADS UP!

JoAnn Fabrics will be mailing out new discount cards to all ASG members sometime in February. Make sure you do not throw this card away. When used, it is good for an additional discount to even "sale" items.

Nancy's Notions offers ASG members a 10% discount on all orders. Include the following discount code numbers when ordering by phone or mail:

Jan-Mar 01	SC#ASG10
April-June 01	SC#ASG11
July-Sept 01	SC#ASG12
Oct-Dec 01	SC#ASG13



# Charming Shelf Bunny

reprinted from <http://www.crafterscommunity.com>

## Materials:

- 7" x 14" fabric scrap
- 6" x 12" muslin scrap
- 1 1/2" x 6" fusible webbing scrap
- Small amount of stuffing
- Wooden man 2 3/8" high by 7/8" diameter
- Embroidery floss
- Acrylic paint - black, brown, white, and light pink
- sewing thread
- glue



These charming bunnies are a great accent to any shelf.

## Instructions:

**Preparing patterns:** Cut pattern pieces along solid cutting lines.

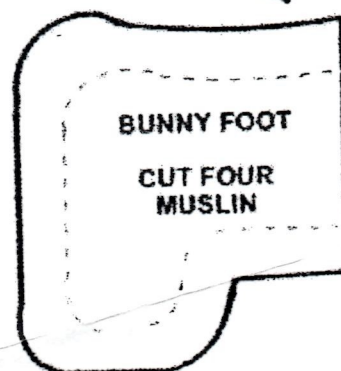
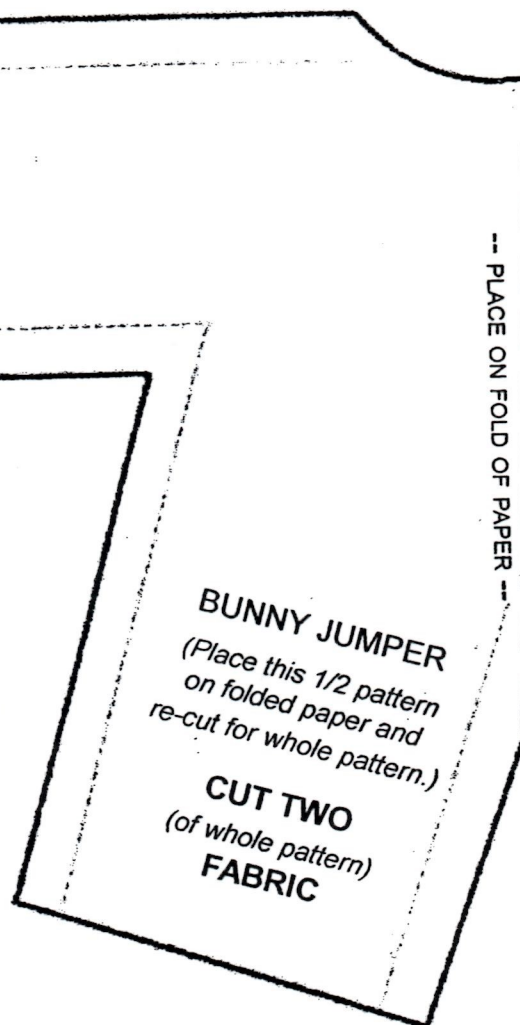
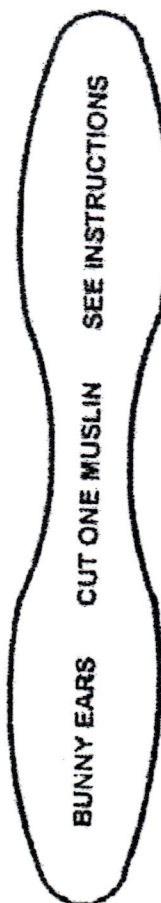
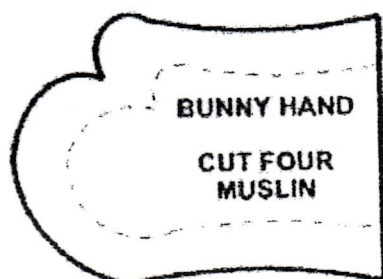
**Note:** all pattern pieces include 1/4 inch seam allowance.

**Jumper:** Fold fabric piece in half. Cut jumper piece along cutting line. With right sides together stitch along stitching lines as shown on pattern. Leave open neck, arm holes and leg holes. Trim seam allowances to 1/8 inch and clip V-areas. Turn piece right side out.

**Ears and face:** Cut out two 1 1/2 x 6 inch pieces of muslin. Use together with fusible webbing. Use this piece to cut out the ears. Glue ears at center to top of wooden head. Using a piece of embroidery floss make a small bow and glue in front of ear section. Paint face as shown in picture.

**Hands and feet:** Using remaining muslin cut out hands and feet. With right sides together stitch along stitching lines. Trim seam allowances to 1/8 inch. Turn pieces right sides out. Stuff firmly with small amounts of stuffing.

**Finishing:** Fold under 1/4 inch of fabric around neck. Starting in center back and using two strands of embroidery floss, make a running stitch around neck - close to edge. Leave about 2 inches of the floss on each end to tie. Insert wooden piece into the neck opening and tie floss firmly around neck. Cut loose ends. Repeat same procedure for hands and feet. Hand tack next to stitching to keep hands and feet from pulling out.



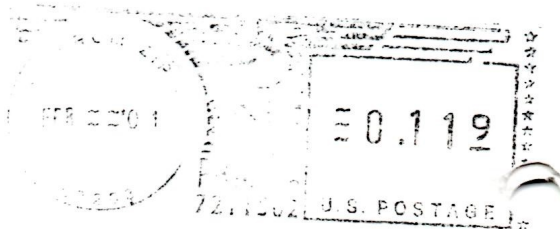


# AMERICAN SEWING GUILD

WICHITA, KANSAS CHAPTER

1020 N. PINECREST

WICHITA, KS 67208



## Inside Info. & Dates to Remember:

September 1, 2000 to June 30, 2001 – Membership Contest – pg. 3  
February 17 & 18, 2001 – Two Full-Day Workshops with Carol Doak –  
The Buttonhole, McPherson, KS  
February 23, 2001 – ASG Bus Trip – pg. 3  
March 30 & 31 – Fabric Swap – pg. 5  
April 28 – Sandra Betzina – Oklahoma City Guild

## Wichita Chapter Meetings:

### Monthly Chapter Meetings

1st Tuesday at 1:30 & 7:00 p.m. - pg. 4

### Derby Neighborhood Group

4th Thursday at 7:00 p.m. - pg. 3

### Hutchinson Neighborhood Group

1st Thursday at 7:30 p.m. - pg. 2 & 4

## American Sewing Guild

### MEMBERSHIP FORM

Name \_\_\_\_\_

Address \_\_\_\_\_

City \_\_\_\_\_ State \_\_\_\_\_ Zip \_\_\_\_\_

Phone (\_\_\_\_) \_\_\_\_\_ Date \_\_\_\_\_

FAX (\_\_\_\_) \_\_\_\_\_ E-mail: \_\_\_\_\_

Return to: **American Sewing Guild**  
Association Headquarters  
9140 Ward Parkway, Suite 200  
Kansas City, Missouri 64114-3336  
FAX (816) 444-0330 info@asg.org

**American  
Sewing  
Guild**

☐ **New Member** - \$35.00

☐ **Renewal** - \$30.00  
(if received *before* expiration date)

☐ **Late Renewal** - \$35.00  
(if received *after* expiration date)

### Wichita, Kansas Chapter

☐ Check enclosed payable to the:  
"American Sewing Guild"

☐ Please bill my MasterCard / VISA  
account (Circle one)

Expiration Date \_\_\_\_\_

Account Number \_\_\_\_\_

Signature \_\_\_\_\_