



# DREAMS and SEAMS

Published By American Sewing Guild - Wichita Kansas Chapter

Volume 6 - No. 4

August/September 2004

Advancing sewing as an art and life skill.

## Upcoming Events!

### 2-DAY PATTERN MAKING SEMINAR FOR THE HOME CLOTHIER BY CONNIE CRAWFORD

Friday and Saturday, September 24 and 25, 2004

We are having Connie Crawford back again for a much deeper foray into the pattern making world. We will learn how to make a sloper and how to use it to make 22 different fashion blocks and so much more. If you would like Connie to make a fashion block or dress form from your body for you, she will be available for 2 days before and 2 days after to take private appts.

[www.fashionpatterns.com](http://www.fashionpatterns.com) If you have questions call Sondra Schmittgens at 943-9813

### SEWING EXPO IN KANSAS CITY

October 14-16 2004, No details yet but keep that weekend free! [www.sewingexpo.com](http://www.sewingexpo.com)

### NO BUS BUS TRIP

November 13, 2004. If you have never gone on one of these you are missing a fun time. Visit with our local merchants, buy a gob of stuff and have fun with friends. Watch newsletter for details

### ASG ELECTIONS !

Happening in November, here's your chance at greatness!

### PEGGY SAYERS OF SILLOUTTE PATTERNS

January 22-25, 2005. Peggy will be here in January. Check out her website to get inspired! This will be a seminar and workshop (possibly two days of workshops) [www.silhouettepatterns.com](http://www.silhouettepatterns.com)

### FABRIC CARNIVAL

March 12, 2005. This is our fabric recycling extravaganza! Rent a table and sell all that fabric you can't figure out why you bought! Tell your friends and do a table together! Come and shop and add to your stash. Do your part for the sewing environment and come recycle fabric with us.

### SEWING RETREAT

August 26-28, 2005. Crosswinds Retreat Center at Hesston. A good time to sew the things you bought at the Fabric Carnival.

## ---THREADS THAT BIND---

It looks as if summer is finally here. What wonderful weather we had in June. I hope none of you had any damage from the storms. I love to wake up and hear the rain on the roof. Some of the lightning shows were just spectacular. And best of all it's great when the early morning temperatures are in the 60's.

Now that we are warming up it will be great to find some time to stay in and sew. Several of us got started at the charity sew-in this last Tuesday. Thank you to every one who participated. I don't have the numbers but we made a whole stack of jackets, mittens, scarves and hats from polar fleece. These will go to the Community in Schools project. Events like this are a wonderful opportunity to get to know your fellow ASG members better. We even decided that we could sing if we wanted. However we were having so much fun sewing we never got to singing, which is good because my singing is not a pretty sound. We still have some fabric left to be sewn, so please check with Anne St Clair if you would like to help.

I also have a nice stack of adult bibs to take to National Conference in Dallas. If you can get them to me before the August meeting I would appreciate it. We do have some members who won't be leaving for conference until the day after the August meeting, and will bring any bibs that are turned in that day.

I will already be in Dallas on the day of our August meeting, so I will miss seeing all of you. There is a meet and greet session for presidents on Tuesday evening, and Leadership day on Wednesday, both of which I will be attending. I hope to come home with lots of ideas for our chapter some of which I will share with you in September.

Now I need to go sew so that I have at least a couple of new outfits to take to conference. I have a couple of ideas I want to try. I saw a really cute skirt made from neckties, so off I went to the thrift shops in search of old ties. No I'm not going to make a necktie skirt but I did find some great ties and I do have some ideas. And then there are the wonderful ideas that Julie from Attic Heirlooms showed us in June, and I have been collecting beads.

Sew Happy  
Shirley





A Pieceful Gathering Place

211 W. Central  
Andover, Kansas 67002

Karen Hayes, Owner  
316-733-2899

Website: [karenssewnsew.com](http://karenssewnsew.com) email: [sewnsew@powwwwer.net](mailto:sewnsew@powwwwer.net)

## CREATIVITY CONTEST 2004

The time is getting closer! I am getting pretty excited to see what you guys come up with. Be wild, be bold, be sedate or plain but whatever you do be creative!

If you made something for the National contest that is great you can use the same thing for our chapter contest!

What are the rules??? We don't need no stinking rules! But...we encourage you to use the 3 new ASG patterns (Simp #5153, #5104 or #5191) we are NOT requiring that you do so. Use any pattern you want (or don't use one at all!) and wear or bring your creation to the Dec. 7th meeting.

Ready, set....SEW!

## Hospitality Committee

Help our hospitality people! They will be asking for your help in providing refreshments and in setting up and taking down our meeting room. If you have a yen for moving chairs, a deep and abiding interest in unfolding folding tables, if vacuuming makes you light headed with joy please volunteer your time before our meeting to make these things happen. Contact Melinda Crager or Margarita Johnston

The Button Hole  
The Hearth Room  
Body & Soul  
Health Food Market  
The Upper Room  
The Button Hole  
Sewing Machine  
Division

*Expect the Unexpected...*  
**THE Button Hole**  
FABRICS • NOTIONS • GIFTS  
*Over 15,000 Bolts*

101 North Main, McPherson, KS 67460  
620-241-5257 • 1-866-Quilter  
620-241-5234 Fax  
[sales@thebuttonhole.net](mailto:sales@thebuttonhole.net)  
[www.thebuttonhole.net](http://www.thebuttonhole.net)

## Charity Sew is Big Success! 2

Thank you, thank you, thank you to all who came and sewed with us at the Charity Sew on July 6!

People came and went from noon until 8:30 PM, all told 20 people sewed jackets, mittens and hats for the Community of Schools.

This was such a fun time. I got to sit and sew by Anne St Clair. She had to go back home for her sewing foot and she sewed two left handed mittens and still did not use any cuss words. She really is as nice as she seems.

Everyone shared a potluck dinner at around 5 PM. Our people really can cook!

Altogether you sewed; 31 jackets and cut out 10 more, 42 pairs of mittens and cut out 10 more. Myrna from Hancock's East sewed 15 caps!

Everything was of fleece and very simple. The Jackets are pull-overs with just a small velcro tab for a closure so no big deal.

Anne still has fleece that needs to be cut out and sewn so if you want to finish off this fleece and make warm cozy things for a bunch of school kids give Anne St Clair a call.

Anne says, and I quote....

THANK YOU BIG TIME!!!!!!

## DID YOU KNOW?

**Midwest Sewing**  
*Sells More Than Just Sewing Machines?*

"Where People  
Deal With People"

### Things We Sell:

Notions	Air Purifiers	Design Cards
Cabinets	Water Purifiers	Quilting Machines
Sergers	Heaters	Grace Quilter
Software	Portable Air Cond.	Vacuums

"Call Us And Talk To A Person Not A Machine"

"We Service What We Sell"



## Library Update by Aleta Vogt

The latest items are: FIBERARTS Magazine, Summer, 2004 issue  
BELLE ARMOIRE Magazine, Summer 2004 issue

Donations from: Marilyn Kirby:

QUILTING & EMBROIDERY Magazine, Special Issue, 2004  
EMBROIDERY JOURNAL Magazine, July, 2002  
EMBROIDERY JOURNAL Magazine, July, 2003  
EMBROIDERY JOURNAL Magazine, Holiday, 2003  
EMBROIDERY JOURNAL Magazine, May, 2004

\*\*\*\*\*Thanks a bunch, Marilyn, for sharing these publications with the ASG Library. \*\*\*\*\*  
They contain lots of good information for our machine embroidery enthusiasts.

### ATTENTION: THREADS Magazine current and new subscribers.

I am awaiting information from The Taunton Press regarding current discount subscription rates for THREADS Magazine. I hope this will arrive by our August meeting so I can compile your renewal or new subscription information. So if your subscription is about to expire or if you would like to become a new subscriber, please see me at the Library table at the August meeting. A check will need to be sent in with your order.

**Deadline for collecting subscriptions is the October, ASG meeting.** This magazine is an excellent source of information and ideas for sewers.

Happy Sewing, Aleta Vogt, ASG Librarian

### Membership Expiration Date

Be sure to check your membership expiration date on your newsletter label. You should receive a renewal notice and form from the National office about 2 months before the expiration date, but if you don't you can still send in your renewal. Notify the national office if you have an address change as our address labels come from them. Not sure what to do? Contact any officer.

### Remember our Retailer's

Following is a list of retailers, and the discounts they offer to ASG members on regularly priced fabric and notions. Remember, to receive your special ASG discount, show your membership card at the cutting table, when purchasing fabric or at the cash register, before purchases are entered.

#### Receive a 10% discount at:

Hancock Fabrics - East/West  
JoAnn Fabrics - All Locations  
Needle Nook Fabrics - Blvd. Plaza  
Prairie Quilts - Parklane Shopping Center  
Sew - N- Sew - Andover, Ks.  
The Sewing Center - W. 21st St.  
Gramma's Calico Cupboard - S. Hydraulic

#### Receive a 15% Discount at:

A-1 Sewing Center - Parklane

#### Receive a 20% Discount at

Southend Sewing

### ADVISORY BOARD

#### President:

Shirley Binder  
943-5063 (H) 684-5855 (W)  
E-mail: sb1026049@onemain.com

#### Vice President:

Becky Wondra, 722-0939  
E-mail: rlwondra1@cox.net

#### Secretary:

Jayne Miller, 943-1213  
E-mail: millerlj@onemain.com

#### Treasurer:

Lori Postlethwait, 831-9527  
E-mail: milo72@sbcglobal.net

#### Librarian/Historian:

Aleta Vogt, 755-1962  
avogt@oznet.ksu.edu

#### Membership Chair:

Marilyn Beaver, 788-5615  
sewaholic66@peoplepc.com  
Mary Malone, 729-9055  
maryandlarrym@domaindiner.com

#### Newsletter Editor:

Sondra Schmittgens, 943-9813  
aslcouple@worldnet.att.net

#### Education Chair:

Denise Dias  
721-7969 (H), 722-7721 (W)  
E-mail: ddias@oznet.ksu.edu

#### Community Service Chair:

Anne St. Clair, 684-5989  
E-mail: ndlnookfab@aol.com

#### Publicity/Retail Liaison Chair:

Barbara Scadden, 682-3402  
E-mail: bscadden@prodigy.net

#### Special Events Chair:

Barb Blackman, 721-5524  
bblackman@cox.net

#### Hospitality Chair(day):

Melinda Crager, 721-3544  
melcrager@cox.net

#### Hospitality Chair (night):

Margarita Johnston, 773-3231

#### Neighborhood Groups Liaison:

Carol Wiens, 788-4448  
E-mail: jackw2@cox.net



## Hutchinson Neighborhood Group

Check out the Hutch web site [www.hutchinsonasg.org](http://www.hutchinsonasg.org)

August 5, 2004 No Meeting

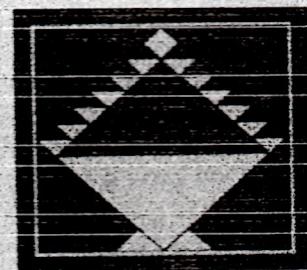
September 2, 2004 Charity Sew @ Hutchinson Community College  
Lockman Hall Home Ec room -Kathy Larson &  
Nina Cross - Hostesses

October 7, 2004 Road Trip! Time and destination to be decided.

### Library Rules

The Library will charge a past due fine of \$1 for each item not returned after one month.

The Librarian will publish a complete list of items annually in the newsletter. New acquisitions will be published in the newsletter.



**Janet's Quilt Basket**

**Janet Robinson**  
Owner

7348 W. 21st St. North #106  
Wichita, Kansas 67205  
316-773-0338  
877-744-9500 Toll Free

### Newsletter Information

Everything in the newsletter is either written by or included by the Newsletter Chairperson, Sondra Schmittgens, unless otherwise noted with a by-line. If you have any complaints, suggestions or articles for submission please call me at 943-9813 or e-mail me at [ascouple@worldnet.att.net](mailto:ascouple@worldnet.att.net).

**The deadline for the Oct/Nov issue is :  
September 20, 2004**

New study finds Benjamin Franklin wrong! A stitch in time actually saves about 14 and a half!

### Advertising Rates

Ad rates for our bimonthly ASG Newsletter will be as follows:

Inserts (one sheet-8 1/2" x 11") is \$30. Multiple sheets are priced by the weight.

Full Page .....\$50

1/2 Page .....\$35

1/4 Page .....\$20

Business Card.....\$10

Classifieds.....10 cents a word

Artwork needs to be camera ready.

Send or give information to

Rebecca Wondra, 1663

Murray, Wichita, Ks. 67212 or

E-mail-[rlwondra1@cox.net](mailto:rlwondra1@cox.net)

## Mark Your Calendar!

The Following dates show the programs planned for sewing guild at the Sedgwick County Extension Education Center, 7001 W. 21st N at 1:30 PM and 7:00 PM

August 3, 2004 Bev Seyfert of The Sewing Center  
Threads and Stabilizers

Sept 7, 2004 Mini-Workshops & National Conference  
highlights.

October 5, 2004 Decorator Fabric Warehouse with  
Teresa Wilson.

November 2, 2004 Sunflower Quilts with Janeen Miller

December 2, 2004 Holiday party & Creativity Contest

"Style is very different from fashion. Once you find something that works, keep it."

----- Tom Ford, Gucci



# NEW MEMBERS!

Welcome to our new members that joined or rejoined in June/July. Add these guys to your phonebook.

Christine McCoy, 825 N Linden Ct, Wichita, KS 67206  
316)636-2004 chrismccoy222@hotmail.com

Courtney D Peters, 825 N Linden Ct, Wichita KS 67206  
316)636-2004 cpmagpie@aol.com

Nancy S Reeves, 16220 W Skyline Dr, Clearwater KS  
67026 620)545-7752 JRR@sktc.net

Lynn Pierce, 2257 N Covington, Wichita KS, 67205  
316)722-5018 gramcam1997@yahoo.com

Angela Lovelace, 6819 E Bayley, Wichita KS 67207  
316)686-7856 angelalovelace@hotmail.com

Donna Witek, 322 Oakwood Ct, Andover KS 67002  
316)733-7419 dlwitek@sbcglobal.net

Lucile G Cline, 1456 S Sabin, Wichita KS, 67209  
316)942-6724

Welcome Welcome Welcome Welcome Welcome

## HELEN ENOX BULLETIN

Helen Enox had a fire in her store on June 8, 2004 and is closed at this time. We all mourn her misfortune and the loss of so many beautiful fabrics.

She will reopen after the building is repaired in September or October and will notify us when she plans to have her fire sale.

Good luck Helen and all our best wishes!

## DERBY NEIGHBORHOOD GROUP

The Derby Neighborhood Group invites you to meet with them on the 4th Thursday of each month at 7:00 pm at the Woodlawn Methodist Church at Kay and Woodlawn in Derby. Go to the south entrance and follow the signs to Room 11E. Questions? Contact Bev Libby 747-2546

August 26, 2004 Stamping by Carol Wiens

September 23, 2004 Locker Hooking by Sue Carpenter



**Sew Natural**  
Unique Fabrics for Fashion & Quilting  
710 N. Main St.  
Newton, KS 67114  
3116-284-2547  
[www.sewnatural.net](http://www.sewnatural.net)

**Prairie Quilts**




1010 S. Oliver, Wichita, KS 67218

email: quiltsfun@prairiequilts.com

[www.prairiequilts.com](http://www.prairiequilts.com)

Shirley Binder - Owner

316-684-5855



**HELEN ENOX**  
fine fabrics  
Fabrics For All Occasions  
BRIDAL AND FORMAL FABRICS  
1332 S.W. 59th  
Okla. City, OK 73119  
(405) 685-1279  
FAX: (405) 685-0764  
DAYWEAR AND SPORTS FABRICS  
HOURS Mon. - Sat. 10 - 6  
Sun. 1 - 5

## THE SEWING CENTER

2101 W. 21st ST.  
WICHITA, KS. 67203-2110  
(316) 832-0819

CHARLEY & BEV SEYFERT  
e-mail: [kansassewbiz@prodigy.net](mailto:kansassewbiz@prodigy.net)

**SINGER**  
APPROVED DEALER

**elna**

NEW & USED SEWING MACHINES • REPAIR SERVICE • FABRICS  
KNITTING MACHINES • VACUUM CLEANERS • NOTIONS • HOME-OWNED



## A Sharp Hint

Vogue Patterns magazine, Aug/Sept 2004 issue, has a helpful reference guide on the many specialized machine needles that have been developed for use with today's fabrics and fibers. Seventeen (!) different types of needles are discussed in an informative article by Kathryn Brenne. This is a good 'clip and save' item for your bulletin board.

-Marilyn Beaver

"Style is knowing who you are, what you want to say and not giving a damn."

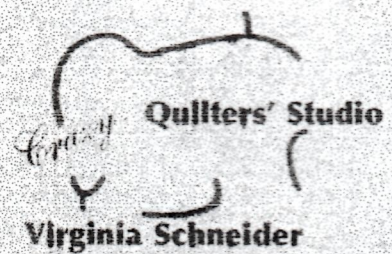
—Gore Vidal

### Sewing Help at Hancocks East

By Barb Scadden

We still need volunteers from the guild to help with our every Wednesday afternoon and evening help sessions available to the public at Hancock's east store. We have people come in sporadically asking for help or advice regarding curtains, wedding dresses, fabric choices, pattern selection, how to bind off a quilt, etc. What a great way to share our knowledge with someone!

Please don't be afraid to volunteer because you feel like you aren't knowledgeable enough. I don't hesitate to tell someone 'I don't know' if I don't! Most people who come in are VERY inexperienced and really appreciate your help. What a great way to introduce the guild to the public! If you could help with either the afternoon session from 2-5 or the evening session from 5-8, please contact me at 682-3402



**Quilters' Studio**  
**Virginia Schneider**  
Quilting - Supplies - Classes - Machine Embroidery  
1065 W. 53rd N. Phone 838-1756  
Wichita, KS 67204

# Close Out Sale!

- Everything Discounted -

**25% - 75% OFF**

## Sonja's

### Couture Designs

- Designer Fabrics
- Lace – Domestic & Imported
- Satins & Silks
- Bras – Sizes 30AAA to 56 J
- Jewelry – Gloves – Scarves
- Bridal Headpieces

(Sale discounts apply to in stock only)

Sonja's is also looking for a buyer for  
Sonja's Couture Designs Business

"It's time to retire."

2724 Boulevard Plaza Center  
Wichita, KS 67211-3812  
316)687-5700



# ELECTION 2004

Our ASG chapter elections are coming this November! Watch the newsletter for your ballot!

Positions available this year are:

1 year terms:

**President:** Oversee the chapter and give it a certain cohesiveness and direction.

**Vice-President:** Aid the President and serve in her absence. Also be cohesive and directional.

2 Year terms:

**Secretary:** Take minutes of all the board meetings, handle chapter correspondence, be the head of the nominating committee.

**Education Chair:** Plan the speakers or activities for our monthly meetings.

**Neighborhood Group Liaison:** Keep up on neighborhood activities and keep the board informed. Help neighborhood groups with any problems they are having.

Please consider being on the board. It is really fun and rewarding. If you have questions about any position call that corresponding board member. Want to put your name in the running? Contact our Secretary, Jayne Miller

GET READY TO RUN!

## Sunflower Quilts

www.sunflowerquilts.com

Fabrics • Notions • Patterns • Books  
Classes • Machine Quilting

405 N. Osage Rd.  
Derby, KS 67037

(316) 788-5120

Janeen Miller  
Owner

## NEEDLE NOOK FABRICS

Specializing in Lingerie & Knit fabrics

Laces • Patterns • Notions • Books • Magazines

2714 Boulevard Plaza  
Wichita, Ks 67211-3812  
316/684-5989

Email: [ndlnookfab@aol.com](mailto:ndlnookfab@aol.com)

MCINTYRE SEW-IN

Come join the fun on the 3rd Saturday of  
the month from 4 pm - midnight every  
month except June & July

CELEBRATING 20 YEARS

Mon-Fri 10:00am-5:30pm

Sat 10:00am-4:00pm

Anne St. Clair

Singer  
Approved  
Dealer

Brothers  
Approved  
Dealer

Plati  
Approved  
Dealer

## A-1 SINGER SEWING CENTER

Dan Beltz

Sales and Service

316-685-0226

Park Lane Shopping Center

1012 S. Oliver

Wichita, KS 67218

1 (800) 725-0226

www.A-1Singer.com



Living Air  
Purifying System

## Her Feathers QUILT SHOP

150 N. Rock Road

316 652-9599

Mon, Wed, Fri 10:00-5:30

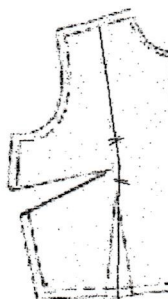
Thur 10:00-8:00 Sat 10:00-5:00

Closed Sundays

Changing the Style Line on a pattern is easier than you think.

Or what we have learned in PMS Group  
by Shirley Binder

Do you like to look of a princess seam, but have a problem with the bust point being in the correct position? Try changing a pattern with an underarm dart to a princess style.



A. Mark your bust point on the pattern.

B. Draw a line from the bust point to the bottom of the pattern piece, parallel to the center front.

If the pattern has a waist dart this should fall in the center of the dart.

C. Draw a line from the bust point to the shoulder.

D. Make a mark on the drawn line 2" above and 2" below the bust point. This mark will serve as matching points when you construct your garment.

E. Cut pattern apart on drawn line.

F. Cut out dart opening. Cut through to bust point. Bring stitching lines of dart together and tape.

G. Add seam allowance to both pattern pieces.

You will now have the best fitting princess seam garment ever.  
Give it a try.



# American Sewing Guild

Wichita, Kansas Chapter

PO Box 49539

Wichita, KS 67201-4539

Be sure to check your mailing label for your expiration date. We don't you to miss the deadline and we would miss you. The Post Office will not forward bulk mail.

MOVING? Our mailing labels come from National headquarters.

Please notify THEM ASAP of any address change by writing to:

ASG National Headquarters  
9660 Hillcroft, Suite 510  
Houston, TX 77096

## Wichita Chapter Meetings:

### Monthly Chapter Meetings

1st Tuesday at 1:30 & 7:00 p.m.

### Derby Neighborhood Group

4th Thursday at 7:00 p.m.

### Hutchinson Neighborhood Group

1st Thursday at 7:30 p.m.

## American Sewing Guild

### MEMBERSHIP FORM

Name: \_\_\_\_\_  
Address: \_\_\_\_\_  
City: \_\_\_\_\_ State: \_\_\_\_\_ Zip: \_\_\_\_\_  
Phone: (\_\_\_\_) \_\_\_\_\_ Date: \_\_\_\_\_  
Fax: (\_\_\_\_) \_\_\_\_\_ E-Mail \_\_\_\_\_  
Sponsor: \_\_\_\_\_

Return to: American Sewing guild  
Association Headquarters  
9660 Hillcroft, Suite 510  
Houston, TX 77096



\_\_\_\_ New Member—\$40.00  
\_\_\_\_ Renewal—\$35.00  
\_\_\_\_ Late Renewal—\$40.00  
Wichita, Kansas Chapter  
Check enclosed payable to:  
"American Sewing Guild"  
Please bill my Mastercard/Visa  
account (Circle One)  
Expiration date \_\_\_\_\_  
Account # \_\_\_\_\_  
Signature \_\_\_\_\_