

## Sewing's a Brees

Mother Nature has given us a couple of days to make us dream of flowers and all things outdoors and of linen, cotton and short sleeves. I hope everyone is busy planning her garment for the Spring Tea. The theme is Going Green – Renew, Reuse, Recycle. Remake an existing garment from your closet or one you find at a recycle shop. Making something from your stash can be recycling. Take a picture of the item before you change it so everyone can appreciate your creativity. If you are stuck for an idea, at least one pattern company has a section on “going green”. Bring your creation and your teacup (optional) to the April meeting. All who create a garment will be rewarded with a chocolate prize.

We just finished our serger workshop and it went well. My thanks to Becky, Shirley, and Julia for all their hard work with the workshop. Thanks also go to Keith and Charles for the manual labor and tech support. In the afternoon, we worked on a tote bag and some even finished! I hope all participants will bring them to the next meeting for show and share.

In addition to the Spring Tea, we have several other exciting events planned. The Regional Meeting is April 18 & 19. Contact me if you are interested in attending so we can plan a carpool. April 29 we will carpool to Tulsa

for the Cloth Merchants sale (contact Becky). The May meeting will feature the Twist Yarn Shop.

At the February meeting, our speaker Connie Cude from Needles & Notions Creative Sewing Center offered her store as a site for our community service sew-ins. April 21 and 28 will be Community Service sewing days. We will be able to use their machines so all we have to provide is thread and fabric. The store is open from 10 AM to 8 PM so let Georgia or Michelle know if you can sew for a couple of hours or all day. We will be working on preemie gowns. We appreciate Connie's generous offer.

ASG celebrates its 30th birthday at its annual conference July 10-14 in Chicago. I urge you to consider attending as you will have the opportunity to take advantage of over 30 instructors teaching more than 100 workshops. In addition, there are exhibits, fashion show, and a chance to meet hundreds of others who share your passion for sewing. You can take your spouse, as there are interesting tours for them while you are in class. The conference brochure will arrive in early April. I have been to three conferences and am looking forward to this one. I hope you will join me.

*Betty*

## Advisory Board

### President

Betty Brees 838-3709  
04120501@cox.net

### Vice President/Newsletter

Julia Langel 733-4780  
julialangel@cox.net

### Vice President/Neighborhood Groups

Theresa Corle 689-6702  
corle1@cox.net

### Secretary

Pat Hernandez 722-9250  
phernandez3@cox.net

### Treasurer

Aurelia Lobban-Beck 522-5282  
cwbeck@onemain.com

### Membership

Jan Adams 721-0448  
j.d.adams@sbcglobal.net

### Special Events

Becky Wondra 722-0939  
rlwondra1@cox.net

### Librarian/Historian

Leah Jones 620-596-2517

### Publicity/Retail Liaison

Barbara Bohm 788-5097  
aalmanret@sbcglobal.net

### Education

Lynanne DeGarmo 755-0675  
degarmokechi@yahoo.com

### Hospitality

Norma Gordon 550-6110  
bgordon4@cox.net  
Pat Postlethwait 744-275

### Community Service

Michele Brakewood 630-0858  
sewfun350@aol.com  
Georgia Whitlock 721-0855

### Fabric FUNd

Shirley Binder 943-5063  
sb1026049@onemain.com

## Membership Renewal

The National office will send you a renewal notice about 2 months before your membership expires. You can check your membership expiration date on the address label of each newsletter. If you don't receive a renewal notice, contact the membership chairwoman, or go to the National website, [asg.org](http://asg.org), where you can renew online.

## Address Changes

If your address, phone number or email changes, please report the changes to both the local membership chair and to the National office (you can use the website at [asg.org](http://asg.org).)

## New and Renewing Members

Welcome new members Velda Vogt, Connie Heckman, and Beryl Krueger.

And welcome back to renewing members Sondra Coln, Nona Mackey, Margarita Johnson, Denise Joslin, Nora Mikels, Deborah Suntheimer, Wanita Schmitt, Mary Ashcroft, Dee Swafford, Nancy Woodson, Lynanne DeGarmo, Christy Hillard, Ruth Kirby, Linda Kirby, Nancy Shepherd, Donna Wilson, and Judy Troyer.

## Advertising Rates

This newsletter is published 6 times per year. We only accept sewing-related ads. Our rates are: 1/8 page—\$60/yr; 1/4 page—\$120/yr; 1/2 page—\$210/yr; 1 page—\$300/yr.

ASG members may place classified ads for 10 cents per word.



## Come to the ASG Regional Meeting!

Members of our ASG region will be meeting in St. Charles, MO, on April 18-19. The regional meeting is a great way to meet other guild members, do a little shopping, and share ideas on how to make our guilds better. We will have at least one carload of Wichitans heading to the meeting and we invite you to come with us.

On Friday afternoon, there will be a bus trip to Tacony (sewing and embroidery machines). There will be a tour and a gift for each person who attends. The

bus will also stop at Sew It Seams and Jackmans for some fabric shopping.

The business meeting will be on Saturday. Helen Gorsuch, National Board of Directors Secretary will join us. Some of the topics to be covered include attracting younger members to ASG, dealing with difficult people, and collaboration and networking between chapters.

We will stay at the Country Inn and Suites (\$98/night with continental breakfast.) Contact Betty Brees if interested.

## For Your Listening Pleasure

Have you discovered podcasts yet? Podcasts are internet "radio" shows that are so easy and cheap to make that all sorts of individuals (podcasters) have been getting involved. There are several really good sewing and crafting podcasts being created every week. And although podcasters may post new shows on a schedule, you can listen to a show whenever you want!

An individual podcast is simply an MP3 file, just like any internet music file. If your computer is set up to handle music files, you are ready to listen to podcasts. You can even download podcasts to your portable music player, like an iPod. Most people use free music players like Windows Media Player, iTunes, RealPlayer or WinAmp.

One cool thing about podcasts is that you can subscribe to them, just like you

can to a blog. This means that you can always have the most recent shows downloaded to your computer and ready to listen whenever you are. And they're free!

There are 3 podcasts that I listen to while I sew:

Sew Forth Now, a podcast for sewists. Lori has interviewed Anne St. Clair, Sandra Betzina, the pattern director at Simplicity Patterns, and many other interesting people. **SewForthNow.blogspot.com**

CraftyPod, a podcast about "making stuff." Sister Diane talks about all sorts of crafts, from sewing and knitting to pinweaving and paper clay. **Craftypod.com**

CraftCast with Alison Lee is a little more serious than CraftyPod. Alison interviews serious artists and discusses creativity and other interesting topics. **CraftCast.com**

## April Events

### General Meeting — April 1

1:30 and 7, Extension Center

This is our Spring Tea, so bring a tea cup if you like. We'll have a fashion show of garments made for our Going Green Challenge. Don't forget your fabric for the Fabric FUNd table.

Betty Brees, 838-3709

### Hutchinson Neighborhood Group — April 3

7:00 pm., Delos Smith Senior Center

Michelle Eis will present a program and we'll show off the results of the "Unloved Fabric Challenge."

Marion Cathcart, 620-669-1265

### West Side Neighborhood Group — April 15

9 a.m., Extension Center

Road trip to Country Cousins Fabric Store in Concordia.

Denise Dias, 722-7721 x116

### East Side Neighborhood Group — April 15

7 pm. Needle Nook Fabrics

Watch your email or check the website for program information, and bring items for Show and Share.

## APRIL 2008

Sun	Mon	Tue	Wed	Thu	Fri	Sat
		1 General Meeting	2	3 Hutchinson NG	4	5
6	7	8	9	10	11	12
13	14	15 West Side, East Side NG	16	17	18 Regional Meeting	19 Regional Meeting
20	21 Community Service	22	23	24 Derby NG	25	26
27	28 Community Service	29 Tulsa Trip	30			

Anne St. Clair 684-5989

### ASG Regional Meeting — April 18 and 19

St. Charles, MO

Shopping and a meeting with representatives from other guilds in our region.

Betty Brees, 838-3709

### Community Service Sewing Days — April 21 and 28

10am to 8pm, Needles and Notions Creative Sewing Center

We will be sewing premie gowns for a local hospital.

Georgia Whitlock, 721-0855, or Michele Brakewood 630-0858

### Derby Neighborhood Group — April 24

7 pm. Woodlawn United Methodist Church, 431 S Woodlawn, Room 11E



## MAY 2008

Sun	Mon	Tue	Wed	Thu	Fri	Sat
				1 Hutchin- son NG	2	3
4	5	6 General Meeting	7	8	9 Newslet- ter Dead- line	10
11	12	13	14	15	16	17
18	19	20 East Side, West Side NG	21	22 Derby NG	23	24
25	26	27	28	29	30	31

Janet Dexter will be presenting Quilt in a day, "Trip Around The World"

Nona Mackey, rmackey5@cox.net, or 316-253-2810

### Road Trip to Tulsa — April 29

We will be carpooling to Tulsa to shop at the Cloth Merchants and Cyrilla's Magic Needle. The cost (to reimburse the drivers for gas) will be \$35.

Becky Wondra, 722-0939

## May Events

### Hutchinson Neighborhood Group — May 1

6pm, Delos Smith Senior Center

We will be having a potluck supper and planning our meetings for the rest of the year.

Marion Cathcart, 620-669-1265

### General Meeting — May 6

1:30 and 7, Extension Center

Shelly Stilger, owner of Twist Yarn Shop, will give an introduction to felting. She'll demonstrate knitted and crocheted items that are felted in the washing machine, needle felting (flat and three-dimensional), and wet felting.

Betty Brees, 838-3709

### Newsletter Deadline — May 9

### East Side Neighborhood Group — May 20

7 pm. Needle Nook Fabrics

Watch your email or check the website for program information, and bring items for Show and Share.

Anne St. Clair 684-5989

### West Side Neighborhood Group — May 20

9 a.m. until 4 p.m. (lunch on your own or with group), Extension Center, Bison Room

We'll be making Anti-Ouch Pouches for breast cancer surgery patients.

Denise Dias, 722-7721 x116

### Derby Neighborhood Group — May 22

7 pm. Woodlawn United Methodist Church, 431 S Woodlawn, Room 11E

Theresa Corle will show us some ways to play with lace.

Nona Mackey, rmackey5@cox.net, or 316-253-2810

## Serge On!



We had a blast at the serger workshop in March! Look at our bags!



## In the Library

Items in our library include books, videos, DVDs, magazines and patterns. These items may be checked out for one month at a time. There is a charge of \$1 per item per month for items returned late.

### New magazines

- Threads, Feb 2008
- Sew News, Jan/Feb 2007, Mar 2008
- Belle Armoire, Jan/Feb 2008, Mar/Apr 2008
- Quilting Arts, Dec/Jan 2008, Feb/Mar 2008
- Sew Beautiful, Jan/Feb 2008, Mar/Apr 2008
- Sew Stylish, Winter 2007



## Local Retailers

These local retailers offer discounts to ASG members on regularly priced fabric and notions. To receive your discount, show your ASG membership card at the time of purchase.

### A-1 Singer Sewing Center (15%)

685-0226  
1012 S Oliver  
Wichita KS  
A-1singer.com

### Country Cousins (10%)

785-243-4044  
114 W 6th St  
Concordia KS  
Countrycousinsfabrics.com

### Hancock Fabrics (10%)

7395 W Central 722-7554  
8131 E Kellogg 682-4574  
Wichita KS

### Helen Enox Fine Fabrics 10%)

405-685-1279  
1332 S W 59th  
Oklahoma City OK

### Hen Feathers (Punch Card)

652-9599  
110 N Rock Rd  
Wichita KS  
Henfeathersquilts.com

### Midwest Sewing Center (15%)

111 S Pattie 262-3438  
7348 W 21st 722-9737  
Wichita KS  
Midwestsew.com

### Needle Nook Fabrics (10%)

684-5989  
2714 Boulevard Plaza  
Wichita KS  
ndlnookfab.blogspot.com

### Prairie Quilts (10%)

684-5855  
1010 S Oliver  
Wichita KS  
Prairiequilts.com

### South End Sewing Center (20%)

262-6221  
2601 S Hydraulic  
Wichita KS  
Southendsewing.com

### Sunflower Quilts (10%)

788-5120  
405 N Osage Rd  
Derby KS  
Sunflowerquilts.com

### The Sewing Center (10%)

832-0819  
2101 W 21st St  
Wichita KS



**Remember to  
say thanks to  
these retailers  
for supporting  
ASG!**

## Hostesses for May

Ginny Perott, Kenna Dice and Julia Langel have volunteered to bring refreshments to the May meeting.

## Prairie Quilt Show Booth

The Prairie Quilt Guild has generously offered us booth space at their fabulous quilt show. Our booth at the 2006 show brought us lots of attention and even a few new members, so we want to do even better this year. Let's get the word out about non-quilt sewing!

The show is Friday, June 20, through Sunday, Jun 22 at Century II. Setup day will be Thursday, June 19.

We need volunteers to plan our exhibit, help set up the booth, loan garments for display, and staff the booth during the show. Please contact Becky Wondra, 722-0939, or Jan Adams, 721-0448, if you would like to help.



ASG 2006 Booth



## AMERICAN SEWING GUILD MEMBERSHIP FORM

### ADVANCING SEWING AS AN ART AND LIFE SKILL

Name \_\_\_\_\_

Address \_\_\_\_\_

City: \_\_\_\_\_ State: \_\_\_\_\_ Zip \_\_\_\_\_

Phone: ( ) \_\_\_\_\_ Date: \_\_\_\_\_

Fax: ( ) \_\_\_\_\_

E-Mail: \_\_\_\_\_

Sponsor: \_\_\_\_\_

**Mail to:** ASG National Headquarters,  
9660 Hillcroft, Suite 510, Houston, TX 77096

☐ New Member ——— \$40.00

☐ Renewal ——— \$35.00

☐ Late Renewal ——— \$40.00

Make check payable to: **"American Sewing Guild"**

Charge To: MasterCard or Visa (Circle One)

Expiration Date \_\_\_\_\_

Account # \_\_\_\_\_

Signature \_\_\_\_\_





# PFAFF

Visit Wichita's ONLY Supreme  
Pfaff Dealer.



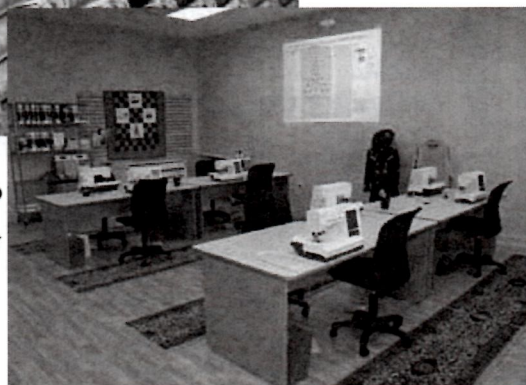
The Needles and Notions Creative Sewing Center  
Sewing Lounge is where you and friends can sew or get  
help with your projects.



Great Thread  
Selection



State of the Art Classroom Now Features the Top  
of the Line **PFAFF** creative vision for Every  
Student



New Market Square

2441 N. Maize Road, Suite 219

Wichita, KS 67205

316-722-5959

[info\\_wichita@needlesandnotions.com](mailto:info_wichita@needlesandnotions.com)



*Fabrics, Notions, Gifts, Books, Patterns, Quilt Kits,*

*Books, Patterns, Quilts*

**THE Button Hole**  
FABRICS • NOTIONS • GIFTS

101 N. Main St. • McPherson, KS 67460  
620-241-5257 • 1-866-QUILTER  
e-mail: sales@thebuttonhole.net  
www.thebuttonhole.net

PFAFF  
Sewing  
Machines  
& Service

Check  
with  
our  
store  
for  
classes  
and  
special  
events!

Bus Tours Welcome  
(Call or e-mail to let us know you are coming)

*- Over 15,000 Bolts of Fabric -*

*Fabrics, Notions, Gifts,*

**Country Cousins**  
Quality Fabrics & Sewing Supplies

Over 4,000 Bolts!  
114 West 6<sup>th</sup> Street  
Concordia, KS 66901  
Phone: 785-243-4044  
www.CountryCousinsFabric.com

Monday-Friday 9-6, Thursday 9-8, Saturday 9-5



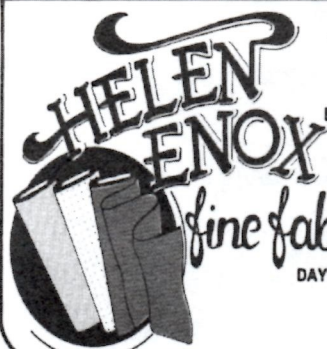
**HELEN ENOX**  
fine fabrics

Fabrics For All Occasions

BRIDAL AND FORMAL FABRICS  
1332 S.W. 59th  
Okla. City, OK 73119  
(405) 685-1279  
FAX: (405) 685-0764

DAYWEAR AND SPORTS FABRICS


HOURS Mon. - Sat. 10 - 6  
Sun. 1 - 5



316.652.9599  
M, W, F • 10-5:30  
T, T • 10-7 • Sat 10-5

**Hen Feathers**  
110 N. Rock Rd.  
Wichita, KS


Quilting & Scrapbooking



**Picket Fence Quilt Company**  
David & Lisa Johnson, Owners

Fabrics    Notions    Books  
Classes    Stencils    Patterns

316-558-8899  
7130 W Maple (Corner of Maple & Ridge Rd)  
Wichita KS 67209



**Prairie Quilts**

1010 S. Oliver, Wichita, KS 67218  
email: quiltsrfun@prairiequilts.com  
www.prairiequilts.com

Shirley Binder - Owner    316-684-5855



**Quilting Bee**    Where Quilters want  
to "Bee"!

120 S. Santa Fe  
Salina, Ks. 67401  
785-823-9376  
quiltingbee@sbcglobal.net

M T W-F 9:30 - 5:30  
Thur 9:30 - 7:00  
Sat 9:30 - 5:00

www.quiltingbee.net



**THE SEWING CENTER**

2101 W. 21st ST.  
WICHITA, KS. 67203-2110  
(316) 832-0819

CHARLEY & BEV SEYFERT  
e-mail: kansassewbiz@prodigy.net

**SINGER**  
APPROVED DEALER

**elna**

NEW & USED SEWING MACHINES • REPAIR SERVICE • FABRICS  
KNITTING MACHINES • VACUUM CLEANERS • NOTIONS • HOME-OWNED

25 Years of Serving Wichita



Singer	White	Brothers	Pfaff
Approved	Approved	Approved	Approved
Dealer	Dealer	Dealer	Dealer

## A-1 SINGER SEWING CENTER

**Dan Beltz**  
Sales and Service  
316-685-0226

Park Lane Shopping Center  
1012 S. Oliver  
Wichita, KS 67218  
1 (800) 725-0226

[www.A-1Singer.com](http://www.A-1Singer.com)

  
Living Air  
Purifying System

## Midwest Sewing & Vacuum



Bernina  
Baby Lock  
Janome  
Simplicity  
Eureka Sanitaire  
Hoover  
Panasonic

*We service what we sell.*

### Two Locations

#### 111 Pattie

Wichita, Kansas 67211

(316) 265-3438

9:30-5:30 M-F, 9-5 Sat.

**7348 W. 21st, Suite 108**

Wichita, Kansas 67205

(316) 722-9737

10-5:30 M-F, 10-5 Sat.

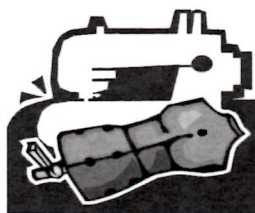
[www.midwestsew.com](http://www.midwestsew.com)



## Needle Nook Fabrics

Anne St. Clair – Owner since 1984

Intimately Yours: Bras  
That Fit (book)  
Elite Bra Pattern  
Queen Elite Bra Pattern  
Bra Workshops  
Bra Fittings  
Variety of Sewing  
Classes



10% Discount for ASG Members  
(regular priced fabrics only)

2714 Blvd. Plaza  
Wichita, KS 67211  
316-684-5989

[NdlNookFab@aol.com](mailto:NdlNookFab@aol.com)

Monthly Sew-In  
2nd Saturday  
4 pm—12pm midnight  
(except June & July)

## Husqvarna VIKING

Books - Patterns  
Notions - Fabrics - Classes  
Hinterberg Hoops & Frames  
Authorized Viking Sales & Service

*See Us For Your Quilting  
and Sewing Needs*

405 Osage Road  
Derby, KS 67037  
316-788-5120

[sunflowerquilts@sbcglobel.net](mailto:sunflowerquilts@sbcglobel.net)



Mon-Thur - 9:30 - 6:00

Fri - Sat - 9:30 - 5:00

Sun - 1:00 - 5:00

[www.sunflowerquilts.com](http://www.sunflowerquilts.com)

**AMERICAN SEWING GUILD, INC**

Wichita, KS Chapter  
P O Box 49539  
Wichita KS 67201-4539

[www.asgwichita.wordpress.com](http://www.asgwichita.wordpress.com)

April/May 2008

Non-Profit Org.  
U.S. Postage  
**PAID**  
Permit No. 923  
Wichita, Kansas

**ASG: Advancing Sewing As An Art And Life Skill**  
**Membership has its privileges!**

- Monthly meetings
- Educational programs from local and industry professionals
- Learn time-saving techniques
- How-to demonstrations
- Specialty Neighborhood Groups
- Receive encouragement and support
- Share and network with sewing friends
- Attend chapter-sponsored events at member-only rates
- Participate in fashion shows and sewing fairs
- Contribute to community outreach through sewing
- Get discounts at local and national stores

