

## Sewing's a Brees

Warning! Warning! If you have to ask about your JoAnn's discount card, everyone will know you didn't read this newsletter. The Notions magazine being sent out in July contains your card. If you didn't see it when the magazine arrived, rescue it quickly and put it in your purse. You will not be able to get a replacement. JoAnn's is no longer providing the cards in a format that allows them to be inserted in the magazine. ASG is assuming the expense to make them available in the magazine rather than doing a bulk mailing to all the chapters. Therefore, we all only get one card.

Summer is well underway and many exciting and fun things have happened or will before this newsletter arrives in your mailbox. The quilt show put on by the Prairie Quilt Guild was great. Many thanks go to Becky, Jan and Beryl for planning our booth and setting it up. Thanks also to Julia and Dora Mae for their help in the set-up. Thanks also to those of you who spent time in our booth telling others about our chapter. It takes many to promote our chapter.

Our charity sews have been very successful and we will schedule some more in the fall. Thank you to Georgia and Michelle for all their work planning these.

By the time you are reading this the County Fair will only be a memory but I did want you to know that our chapter is still supporting the Style Review. All

participating 4-Hers receive a token gift and we gave three gift certificates from one of our advertisers to the intermediate reserve champion, the junior champion and the junior reserve champion.

Congratulations to Hayley Williamson for being selected runner-up in the Shining Star category of the ASG Creativity Contest. Hayley was unable to attend but her dress was there for all to enjoy. Hopefully, she will share it with all of us at the August meeting. In addition to my attendance at the national conference other members of our chapter attending included: Michele Brakewood, Anne St. Clair, Deb Romero, Grace Schmied, Monica Bravo, and Denise Dias. Ask any of them about their conference experience. You may be inspired to attend next year in Albuquerque, NM.

Due to the wonderful response to the sloper workshop we will be scheduling more in August. If you missed out and are interested contact Becky Wondra. Thanks to Sondra Schmittgens and all her "helpers" for doing this for all of us.

At the June CAB meeting we appointed this year's nominating committee – Chairperson Pat Hernandez, Georgia Whitlock, and Beryl Silkey. I hope, when they call you, you will be able to say yes. If not, please consider sharing with them where you feel your talents lay and how you can help our chapter.

*Betty*

## Advisory Board

### President

Betty Brees 838-3709  
04120501@cox.net

### Vice President/Newsletter

Julia Langel 733-4780  
julialangel@cox.net

### Vice President/Neighborhood Groups

Theresa Corle 689-6702  
corle1@cox.net

### Secretary

Pat Hernandez 722-9250  
phernandez3@cox.net

### Treasurer

Aurelia Lobban-Beck 522-5282  
cwbeck@onemain.com

### Membership

Jan Adams 721-0448  
j.d.adams@sbcglobal.net

### Special Events

Becky Wondra 722-0939  
rlwondra1@cox.net

### Librarian/Historian

Leah Jones 620-596-2517

### Publicity/Retail Liaison

Barbara Bohm 788-5097  
aalmanret@sbcglobal.net

### Education

Lynanne DeGarmo 755-0675  
degarmokechi@yahoo.com

### Hospitality

Norma Gordon 550-6110  
bgordon4@cox.net  
Pat Postlethwait 744-275

### Community Service

Michele Brakewood 630-0858  
sewfun350@aol.com  
Georgia Whitlock 721-0855

### Fabric FUNd

Shirley Binder 943-5063  
sb1026049@onemain.com

## Membership Renewal

The National office will send you a renewal notice about 2 months before your membership expires. You can check your membership expiration date on the address label of each newsletter. If you don't receive a renewal notice, contact the membership chairwoman, or go to the National website, [asg.org](http://asg.org), where you can renew online.

## Address Changes

If your address, phone number or email changes, please report the changes to both the local membership chair and to the National office (you can use the website at [asg.org](http://asg.org).)

## New and Renewing Members

Welcome new members Jennifer Mead and Margaret Barrett.

And welcome back to renewing members Martha Flanagan, Lori Barvais, Deanna Full, Carol Graham, Barbara Kroeger, Teresa Lang, Mary Malone, Dawna O'Connor, Audrey Bennett, Theresa Corle, Dana Shipley, Marilyn Logbeck, Sue Hunt, Norma Gordon, Dorothy Johanek, Kenna Dice, Ginny Perott and Julia Myers.

## Advertising Rates

This newsletter is published 6 times per year. We only accept sewing-related ads. Our rates are: 1/8 page—\$60/yr; 1/4 page—\$120/yr; 1/2 page—\$210/yr; 1 page—\$300/yr.

ASG members may place classified ads for 10 cents per word.



**Coming Next Year — Nancy Nix-Rice!**

We are excited to announce that Nancy Nix-Rice will be coming to Wichita next March. Nancy is a nationally-known wardrobe consultant with life-long home-sewing roots. She's been an award-winning fabric retailer, Baby Lock education manager, writer for Sew News and McCall Pattern Magazine, and Palmer/Pletsch author. She can teach you to know – before you sew – exactly which styles, fabrics and details will make you look and feel like a million:

- How “points of connection” make any woman look and feel beautiful.
- The basics of color theory – how to identify your personal key neutral (clue: it’s probably NOT black) and your most flattering shade of white.
- How to classify your coloring as warm or cool ... or something in between.

- Accent colors that spotlight your best characteristics.
- 4 body classification and key styles to flatter each unique figure type.
- Solutions to banish the 8 common figure challenges.
- The (almost) universal secret to looking taller, thinner and more proportional.
- How facial structure dictates design details and accessory shapes.
- Accessory selection – finding the ideal shoes, belts and handbags to finish your look.
- Purging your closet (and your fabric stash) –deciding what goes, what stays.
- 2 surprising updates to give questionable garments new life.

## Sewing Retreat!

We will have a midweek sewing retreat on Tuesday, September 30 and Wednesday, October 1. Bring your machines and supplies and make some serious progress on your current projects. The fee is \$15 for one day (either day) and \$25 for both days.

We will sew from 9am to 7pm on Tues-

day and 9am to 5pm on Wednesday. Lunch and snacks are included both days, as is dinner on Tuesday.

This would be a great time to try making a garment from your new sloper or to stock up on fabric grocery bags! Come join us!

## Registration Form — Sewing Retreat Sept 30 & Oct 1

Name:

Address:

Phone:

Email:

[illegible]

Please make checks to ASG Wichita Chapter.

Please mail registration and fee to Becky Wondra, 1663 Murray, Wichita, KS 67212

## August Events

### General Meeting — June 3

1:30 and 7, Extension Center

We'll be making grocery bags (see below for details). In addition, members of the 4H Style Review will present a fashion show for us. Bring items for Sew and Share!

Betty Brees, 838-3709

### Hutchinson Neighborhood Group — No Meeting

Marion Cathcart, 620-669-1265

### West Side Neighborhood Group — August 19

9 a.m. until 4 p.m. (lunch on your own or with group), Extension Center, Bison Room

Sew for Christmas!

Denise Dias, 722-7721 x116

### East Side Neighborhood Group — August 19

7 pm. Needle Nook Fabrics

We will hear a report on the National Convention from Betty and Anne.

Theresa Corle, 689-6702

### Sloper Workshop — August 23

9am to 5pm, Extension Center

We will be fitting slopers. Every participant will get one. Fee is \$25 for ASG members, \$35 for others, and includes lunch.

Becky Wondra, 722-0939

### CAB Meeting — August 26

### Derby Neighborhood Group — August 28

7 pm. Woodlawn United Methodist Church, 431 S Woodlawn, Room 11E

Linda Emery will demonstrate re-modeling t-shirts.

Nona Mackey, [rmackey5@cox.net](mailto:rmackey5@cox.net), or 316-253-2810

## Sew a Grocery Bag in August

We are going to do a hands-on program for our August meeting! We will be creating bags!!! You can make a "green bag" for shopping, or a bag in which to carry around all of your "stuff." Bring along a pattern, fabric, sewing machine, basic sewing supplies (scissors, thread, tape measure, etc.) and let's have some fun sewing and getting to know each other better in the process.

If you don't have a pattern, following is a materials list for a simple market bag that measures approximately 15" top

to bottom x 12" across the front with a 9" side width. We will have the directions to assemble the purse at the meeting. You will need: 2/3 yard of Home Décor fabric and, optionally, a 12" x 8 1/2" piece of cardboard for the bottom.. (If you would like to cut your fabric prior to the meeting, you will need two pieces 16"x12 1/2"; one piece 9" x 43 1/2"; two pieces 5" x 44"). Also, following is a link for another bag that you may enjoy creating! <http://www.craftster.org/forum/index.php?topic=177482.0>



## September Events

### General Meeting — Sept 2

1:30 and 7, Extension Center

Happy Birthday to ASG Wichita! We'll be sewing dolls to give to charity. Bring items for Sew and Share!

Betty Brees, 838-3709

### Hutchinson Neighborhood Group — Sept 4

5:30pm to 9pm, Hutchinson Community College Home Ec Room

Annual Charity Sew for the Cancer Society or Hutchinson Hospital.

Marion Cathcart, 620-669-1265



Hayley Williamson's Shining Star Dress!

### Newsletter Deadline — Sept 5

### East Side Neighborhood Group — Sept 16

7 pm. Needle Nook Fabrics

Janet Grimsley will demonstrate a paper pieced pillow. Bring items for Show and Share.

Theresa Corle, 689-6702

### West Side Neighborhood Group — Sept 16

9 a.m. until 4 p.m. (lunch on your own or with group), Extension Center, Bison Room

Serge an easy Christmas tree skirt.

Denise Dias, 722-7721 x116

### CAB Meeting — Sept 23

### Derby Neighborhood Group — Sept 25

7 pm. Woodlawn United Methodist Church, 431 S Woodlawn, Room 11E

Program to be announced.

Nona Mackey, [rmackey5@cox.net](mailto:rmackey5@cox.net), or 316-253-2810

### Sewing Retreat — Sept 30 & Oct 1

9am to 5pm, Extension Center

Bring your own! Fee is \$15 for one day, \$25 for both, and includes lunch and snacks.

Becky Wondra, 722-0939

## In the Library

Items in our library include books, videos, DVDs, magazines and patterns. These items may be checked out for one month at a time. There is a charge of \$1 per item per month for items returned late.

### New magazines

- *Sew News*: June/July 2008
- *Quilting Arts*: June/July 2008
- *Belle Armoire*: July/Aug 2008
- *Cross Stitcher*: Misc 1995, 1996, 1998 (donated by Norma Gordon)
- *Cross Stitch Sampler*: Misc 1993, 1994, 1995 (donated by N. Gordon)
- *Designs in Machine Embroidery*: Assorted Holiday, 2004, 2005, 2006, 2007, 2008 (donated by Pam Fulton)
- *Creative Machine Embroidery*: Misc 2003, 2004, 2005, 2006, 2007, 2008 (donated by Pam Fulton)
- *Clotilde's Sewing Savvy*: Misc 2005, 2006, 2007 (donated by Pam Fulton)

### New Videos

Donated by Kathy Lauer

Sewing with Nancy (Zieman) VHS:

- *Sewing Notions Know How*
- *Fabric Know How*
- *Sewing Specialty Fabrics*
- *Creative Accents*

- *Serging and Sewing Activewear*
- *Sewing for the Bride*
- *Home Decorating — Window Treatments*
- *Sewing Basics*
- *Fitting*
- *Busy Women's Sewing*
- *Tailoring*
- *Sewing for Children*
- *Serger/Overlock*
- *Quilting*

### Bernina

- *Artista Sewing and Embroidery*
- *Footworks — Exciting Presser Foot Techniques*
- *Sewing Basics*
- *Bernina 1630 Inspiration Plus*

### New Home

- *Owners Guide to the Memory Craft Scan and Sew*
- *Janome Memory Craft 9000 Sewing Machine*
- *Janome MemoryCraft 9000 — Automatic Patchwork/Quilting*

### Babylock

- *Babylock Esante Instruction Video*

## Threads Renewals

Leah will be sending in the Threads magazine order after the October meeting, so bring your checks! Threads subscriptions are 1 yr. \$26.36, 2 yr. \$43.96, 3 yr.

\$63.16. Sew Stylish is available for 1 year only \$15.96. Again, if we get ten renewals or subscriptions, Taunton will renew our guild subscription for free.



## Local Retailers

These local retailers offer discounts to ASG members on regularly priced fabric and notions. To receive your discount, show your ASG membership card at the time of purchase.

### A-1 Singer Sewing Center (15%)

685-0226  
1012 S Oliver  
Wichita KS  
A-1singer.com

### Country Cousins (10%)

85-243-4044  
114 W 6th St  
Concordia KS  
Countrycousinsfabrics.com

### Hancock Fabrics (10%)

7395 W Central 722-7554  
8131 E Kellogg 682-4574  
Wichita KS

### Helen Enox Fine Fabrics 10%)

405-685-1279  
1332 S W 59th  
Oklahoma City OK

### Hen Feathers (Punch Card)

652-9599  
110 N Rock Rd  
Wichita KS  
Henfeathersquilts.com

### Midwest Sewing Center (15%)

111 S Pattie 262-3438  
7348 W 21st 722-9737  
Wichita KS  
Midwestsew.com

### Needle Nook Fabrics (10%)

684-5989  
2714 Boulevard Plaza  
Wichita KS  
ndlnookfab.blogspot.com

### Prairie Quilts (10%)

684-5855  
1010 S Oliver  
Wichita KS  
Prairiequilts.com

### South End Sewing Center (20%)

262-6221  
2601 S Hydraulic  
Wichita KS  
Southendsewing.com

### Sunflower Quilts (10%)

788-5120  
405 N Osage Rd  
Derby KS  
Sunflowerquilts.com

### The Sewing Center (10% excluding machines and cabinets)

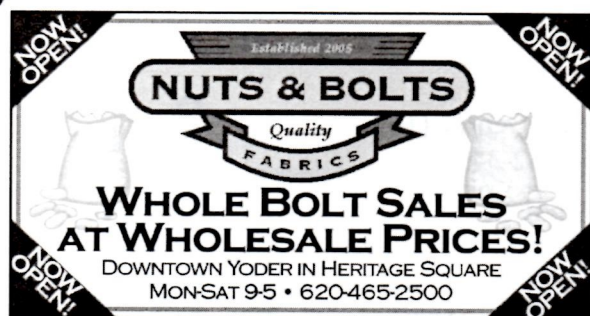
832-0819  
2101 W 21st St  
Wichita KS



**Remember to  
say thanks to  
these retailers  
for supporting  
ASG!**

## Hospitality for June

Phyllis Calvert, Marilyn Beaver and Betty Fidler have volunteered to bring refreshments to the June meeting. Thanks to May hostesses!



### Fall Color Predictions

The Pantone Color Institute has chosen ten colors they say will be big for Fall 2008: Blue Iris (the color of the year), Royal Lilac, Shady Glen (a teal), Caribbean Sea (turquoise), Aurora Red, Shitake (mushroom brown), Withered Rose, Twilight Blue, Burnt Orange and Ochre. To see the colors and some designer garments that guided their choices, go to [www.pantone.com/fall2008](http://www.pantone.com/fall2008)

### Sewing Expo in Kansas City

The Original Sewing & Quilt Expo will be in Kansas City October 23-25. Visit [sewingexpo.com](http://sewingexpo.com) for class schedules and information on volunteer opportunities.

**American  
Sewing  
Guild**

### AMERICAN SEWING GUILD MEMBERSHIP FORM

#### ADVANCING SEWING AS AN ART AND LIFE SKILL

Name \_\_\_\_\_

Address \_\_\_\_\_

City: \_\_\_\_\_ State: \_\_\_\_\_ Zip \_\_\_\_\_

Phone: ( ) \_\_\_\_\_ Date: \_\_\_\_\_

Fax: ( ) \_\_\_\_\_

E-Mail: \_\_\_\_\_

Sponsor: \_\_\_\_\_

☐ New Member — \$40.00

☐ Renewal — \$35.00

☐ Late Renewal — \$40.00

Make check payable to: **"American Sewing Guild"**

Charge To: MasterCard or Visa (Circle One)

Expiration Date \_\_\_\_\_

Account # \_\_\_\_\_

Signature \_\_\_\_\_

**Mail to:** ASG National Headquarters,  
9660 Hillcroft, Suite 510, Houston, TX 77096



106 S. Main

Broken Arrow, OK  
74012

918.251.7094

Tulsa's unique shop  
for quilt & clothing  
fabrics, located at the  
corner of Broadway  
& Main, in downtown  
Broken Arrow.

**SewFlakes**  
*Fine Quilt & Fashion Fabrics*





# PFAFF

Visit Wichita's ONLY Supreme  
Pfaff Dealer.



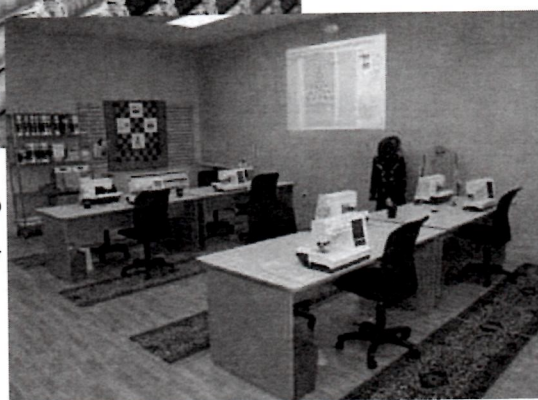
The Needles and Notions Creative Sewing Center Sewing Lounge is where you and friends can sew or get help with your projects.



Great Thread  
Selection



State of the Art Classroom Now Features the Top of the Line **PFAFF** creative vision for Every Student



New Market Square

2441 N. Maize Road, Suite 219

Wichita, KS 67205

316-722-5959

[info\\_wichita@needlesandnotions.com](mailto:info_wichita@needlesandnotions.com)



*Fabrics, Notions, Gifts, Books, Patterns, Quilt Kits,*

**THE Button Hole**  
FABRICS • NOTIONS • GIFTS

101 N. Main St. • McPherson, KS 67460  
620-241-5257 • 1-866-QUILTER  
e-mail: sales@thebuttonhole.net  
www.thebuttonhole.net

Bus Tours Welcome  
(Call or e-mail to let us know you are coming)

PFAFF Sewing Machines & Service

Check with our store for classes and special events!

*Fabrics, Notions, Gifts,*

- Over 15,000 Bolts of Fabric -

## Country Cousins

Quality Fabrics & Sewing Supplies

Over 4,000 Bolts!

114 West 6<sup>th</sup> Street  
Concordia, KS 66901  
Phone: 785-243-4044  
www.CountryCousinsFabric.com



Monday-Friday 9-6, Thursday 9-8, Saturday 9-5

**HELEN ENOX**  
*fine fabrics*

Fabrics For All Occasions

BRIDAL AND FORMAL FABRICS  
1332 S.W. 59th  
Okla. City, OK 73119  
(405) 685-1279  
FAX: (405) 685-0764

DAYWEAR AND SPORTS FABRICS

HOURS Mon. - Sat. 10 - 6  
Sun. 1 - 5

316.652.9599  
M, W, F • 10-5:30  
T, T • 10-7 • Sat 10-5



**Hen Feathers**  
**110 N. Rock Rd.**  
**Wichita, KS**

Quilting & Scrapbooking

**Picket Fence Quilt Company**  
David & Lisa Johnson, Owners

Fabrics    Notions    Books  
Classes    Stencils    Patterns

316-558-8899  
7130 W Maple (Corner of Maple & Ridge Rd)  
Wichita KS 67209

## Prairie Quilts



1010 S. Oliver, Wichita, KS 67218  
email: quiltsrfun@prairiequilts.com  
www.prairiequilts.com  
Shirley Binder - Owner    316-684-5855

**Quilting Bee**    *Where Quilters want to "Bee"!*

120 S. Santa Fe  
Salina, Ks. 67401  
785-823-9376  
quiltingbee@sbcglobal.net

M thru F 9:30 - 5:30  
Sat 9:30 - 5:00

www.quiltingbee.net

## THE SEWING CENTER

2101 W. 21st ST.  
WICHITA, KS. 67203-2110  
(316) 832-0819

CHARLEY & BEV SEYFERT  
e-mail: kansassewbiz@prodigy.net



NEW & USED SEWING MACHINES • REPAIR SERVICE • FABRICS  
KNITTING MACHINES • VACUUM CLEANERS • NOTIONS • HOME-OWNED

25 Years of Serving Wichita



Singer	White	Brothers	Pfaff
Approved	Approved	Approved	Approved
Dealer	Dealer	Dealer	Dealer

## A-1 SINGER SEWING CENTER

**Dan Beltz**

Sales and Service

316-685-0226

Park Lane Shopping Center

1012 S. Oliver

Wichita, KS 67218

1 (800) 725-0226

[www.A-1Singer.com](http://www.A-1Singer.com)



Living Air

Purifying System

## Midwest Sewing & Vacuum



Bernina  
Baby Lock  
Janome  
Simplicity  
Eureka Sanitaire  
Hoover  
Panasonic

*We service what we sell.*

### Two Locations

#### 111 Pattie

Wichita, Kansas 67211

(316) 265-3438

9:30-5:30 M-F, 9-5 Sat.

**7348 W. 21st, Suite 108**

Wichita, Kansas 67205

(316) 722-9737

10-5:30 M-F, 10-5 Sat.

[www.midwestsew.com](http://www.midwestsew.com)



## Needle Nook Fabrics

Anne St. Clair – Owner since 1984

**Intimately Yours: Bras**

**That Fit (book)**

**Elite Bra Pattern**

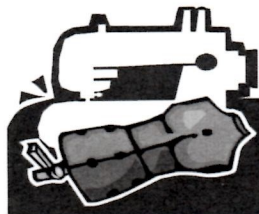
**Queen Elite Bra Pattern**

**Bra Workshops**

**Bra Fittings**

**Variety of Sewing**

**Classes**



10% Discount for ASG Members  
(regular priced fabrics only)

2714 Blvd. Plaza

Wichita, KS 67211

316-684-5989

[NdlNookFab@aol.com](mailto:NdlNookFab@aol.com)

Monthly Sew-In

2nd Saturday

4 pm—12pm midnight

(except June & July)

**Husqvarna**

**VIKING**

Books - Patterns

Notions - Fabrics - Classes

Hinterberg Hoops & Frames

Authorized Viking Sales & Service

*See Us For Your Quilting  
and Sewing Needs*

405 Osage Road

Derby, KS 67037

316-788-5120

[sunflowerquilts@sbcglobal.net](mailto:sunflowerquilts@sbcglobal.net)

**Sunflower  
Quilts**

Mon - Thur - 9:30 - 6:00

Fri - Sat - 9:30 - 5:00

Sun - 1:00 - 5:00

[www.sunflowerquilts.com](http://www.sunflowerquilts.com)

**AMERICAN SEWING GUILD, INC**

Wichita, KS Chapter  
P O Box 49539  
Wichita KS 67201-4539

[www.asgwichita.wordpress.com](http://www.asgwichita.wordpress.com)

August/September 2008



20090430  
BETTY BRES  
4860 N WYNDHAM RD  
PARK CITY KS 67219-5501

**ASG: Advancing Sewing As An Art And Life Skill**  
**Membership has its privileges!**

- Monthly meetings
- Educational programs from local and industry professionals
- Learn time-saving techniques
- How-to demonstrations
- Specialty Neighborhood Groups
- Receive encouragement and support
- Share and network with sewing friends
- Attend chapter-sponsored events at member-only rates
- Participate in fashion shows and sewing fairs
- Contribute to community outreach through sewing
- Get discounts at local and national stores

**American  
Sewing  
Guild**

The logo for the American Sewing Guild, featuring the text "American Sewing Guild" in a serif font, with a stylized needle and thread forming a decorative flourish underneath.