

## Sewing's a Brees

### Happy Birthday to us!!

As of September the Wichita Chapter is ten years old. At our general meeting we had a birthday party complete with balloons, cupcakes, flowers, and games. A sewing genie (SB) made me a wonderful apron with cupcake fabric which I wore for the festivities. Thank you.

We have had some changes but many things remain the same. Of our founding members, twenty nine are still members. Over the years new activities and events have been started and it is change that helps us grow. We have 4 neighborhood groups and are open to having more as the need/interest grows.

Over the past 20 plus years that I've been an ASG member, I have had membership in four chapters and I'm proud to say that the Wichita Chapter is as outstanding as any.

In this newsletter you will find your 2008 proxy ballot. We have a fine slate of officers for you to vote for. Aurelia Lobban-Beck is the only current officeholder choosing not to run for reelection. Aurelia has been our treasurer for three years and has done an outstanding job keeping track of our finances. Becky Wondra has agreed to run in her place. The nominating committee (Pat Hernan-

dez, Georgia Whitlock, and Beryl Silkey) deserve all of our thanks as they talked to many members and have also gathered names for CAB positions. Our annual meeting will be held November 4, 2008. You can vote at the meeting (you will need your membership card) or mail in the proxy ballot before October 31, 2008.

Other upcoming events include the Original Sewing & Quilt Expo in Kansas City October 23-25. I hope many of you will have the opportunity to attend and learn from all the excellent instructors scheduled to be there. Maybe you will be willing to share your new knowledge at a general meeting or a neighborhood group meeting.

Remember to bring your ideas for Christmas gifts (including the pattern) to the October meeting. We will select some to be demonstrated at the November meeting. This will also be our annual meeting and ballots will be counted. The December meeting will be our Christmas party, Christmas challenge, and installation of officers and new CAB. For the Christmas challenge make a doll (see page 5 for more information). All entries will be donated to a charity. All participants will be entered in a drawing to receive free admission to the Nancy Nix Rice seminar in March 2009.

Betty

## Advisory Board

### President

Betty Brees 838-3709  
04120501@cox.net

### Vice President/Newsletter

Julia Langel 733-4780  
julialangel@cox.net

### Vice President/Neighborhood Groups

Theresa Corle 689-6702  
corle1@cox.net

### Secretary

Pat Hernandez 722-9250  
phernandez3@cox.net

### Treasurer

Aurelia Lobban-Beck 522-5282  
cwbeck@onemain.com

### Membership

Jan Adams 721-0448  
j.d.adams@sbcglobal.net

### Special Events

Becky Wondra 722-0939  
rwondra1@cox.net

### Librarian/Historian

Leah Jones 620-596-2517

### Publicity/Retail Liaison

Barbara Bohm 788-5097  
aalmanret@sbcglobal.net

### Education

Lynanne DeGarmo 755-0675  
degarmokechi@yahoo.com

### Hospitality

Norma Gordon 550-6110  
bgordon4@cox.net  
Pat Postlethwait 744-275

### Community Service

Michele Brakewood 630-0858  
sewfun350@aol.com  
Georgia Whitlock 721-0855

### Fabric FUNd

Shirley Binder 943-5063  
sb1026049@onemain.com

## Membership Renewal

The National office will send you a renewal notice about 2 months before your membership expires. You can check your membership expiration date on the address label of each newsletter. If you don't receive a renewal notice, contact the membership chairwoman, or go to the National website, [asg.org](http://asg.org), where you can renew online.

## Address Changes

If your address, phone number or email changes, please report the changes to both the local membership chair and to the National office (you can use the website at [asg.org](http://asg.org).)

## New and Renewing Members

Welcome new members Tammy Schuster, Elizabeth Deck, and Suzanne Mason.

And welcome back to renewing members Evelyn Cole, Michele Brakewood, Linda Bryan, Joan Fitzjarrald, Beryl Silkey, Cynthia Anne Jesseph, Kathleen Wood, Kathy Larson, Liz Bentley, Mary Dold, Jean Mulford, Denise Dias, Marilyn Beaver, Barbara Scadden, Lyla Flippo, Sharon Marcotte, Sheryl Caryl, Marsha Volz, Ruby Chrisco, Marion Cathcart, Aleta Vogt, and Grace Schmeid.

## Advertising Rates

This newsletter is published 6 times per year. We only accept sewing-related ads. Our rates are: 1/8 page—\$60/yr; 1/4 page—\$120/yr; 1/2 page—\$210/yr; 1 page—\$300/yr.

ASG members may place classified ads for 10 cents per word.





## October Events

### **Sewing Retreat — September 30 & October 1**

9am to 5pm, Extension Center

Bring your own projects. Fee is \$15 for one day, \$25 for both, and includes lunch and snacks.

Becky Wondra, 722-0939

### **Hutchinson Neighborhood Group — October 2**

7pm to 9pm, Delos Smith Center, 101 W. 1st

Please bring 2 handmade items that would be good gift items. (Both items from the same pattern - just different fabrics etc.) Bring patterns to share. These items will be used for the auction in November. Be sure to bring your "Sew n Tell" items.

Marion Cathcart, 620-669-1265

### **General Meeting — October 7**

1:30 and 7, Extension Center

Bring your ideas for making Christmas Gifts! Dawna O'Connor will be discussing threads. Bring items for Sew

and Share!

Betty Brees, 838-3709

### **West Side Neighborhood Group — October 21**

9 a.m. until 4 p.m. (lunch on your own or with group), Extension Center, Bison Room

We will be showing off the results of the Brown Bag Challenge.

Denise Dias, 722-7721 x116

### **East Side Neighborhood Group — October 21**

7 pm. Needle Nook Fabrics

Show and share items for the autumn season.

Theresa Corle, 689-6702

### **Derby Neighborhood Group — October 23**

7 pm. Woodlawn United Methodist Church, 431 S Woodlawn, Room 11E

Sallylou Coleman will show us how to make Roman Shades.

Nona Mackey, [rmackey5@cox.net](mailto:rmackey5@cox.net), or 316-253-2810

## Extension Bus Trip

Join us at 7:00 a.m. on Oct. 10, for a quilt tour of North Central Oklahoma.

Our first stop will be at Sooner Quilts. Our next stop, Extra Special Fabrics, is known for carrying great western fabrics.

Lunch will be at the Victorian Tea Room.

At Prairie Quilt, a shop featuring 5,000 bolts of fabric, we'll learn how to sew piping hot binding and chenille hot pads.

Registration is \$40.00. It includes bus fare, driver gratuity, chilled bottled water, snacks, and more. Call 316-722-7721 to reserve your space.



## November Events

### General Meeting — November 4

1:30 and 7, Extension Center, Sunflower Room

We will be doing mini-workshops on Christmas projects. Bring items for Sew and Share!

Betty Brees, 838-3709

### Hutchinson Neighborhood Group — November 6

6:30pm to 9pm, Delos Smith Center, 101 W. 1st

We will be having an open auction! Members can sell fabric, notions, patterns and craft items. The public is welcome — invite your sewing friends!

Marion Cathcart, 620-669-1265

### Newsletter Deadline — November 7

### East Side Neighborhood Group — November 18

7 pm. Needle Nook Fabrics

Michele Brakewood will be demonstrating interesting uses for your sewing machine feet.

Theresa Corle, 689-6702

### West Side Neighborhood Group — November 18

9 a.m. until 4 p.m. (lunch on your own or with group), Extension Center, Bison Room

We will be sewing birthday or holiday stockings.

Denise Dias, 722-7721 x116

### CAB Meeting — November 25

### Derby Neighborhood Group — No Meeting

Happy Thanksgiving!

Nona Mackey, [rmackey5@cox.net](mailto:rmackey5@cox.net), or 316-253-2810

## December Challenge — Make a Doll for Charity!

For the Christmas challenge make a doll to be given to a children's charity. You can either make a doll (or stuffed animal) from your choice of pattern and fabrics, or you can get a partially assembled doll from Lynanne DeGarmo.

Lynanne has a variety of doll parts that were donated to the guild and we are making these available, although what she has may be a bigger challenge

than any of us are looking for. If you are an experienced doll maker and want a real challenge give her a call. We may also schedule some group sewing times for Lynanne to supervise.

All entries in the challenge will be donated to a charity. Every participant will be entered in a drawing to receive free admission to the Nancy Nix Rice seminar in March 2009.

## In the Library

Items in our library include books, videos, DVDs, magazines and patterns. These items may be checked out for one month at a time. There is a charge of \$1 per item per month for items returned late.

### New magazines

- *Sew News*: Aug/Sept 2008
- *Quilting Arts*: Aug/Sept 2008
- *Belle Armoire*: Sept/Oct 2008
- *Threads*: Sept, Oct/Nov 2008
- *Altered Couture*: Autumn 2008

### New Books

- *Creative Surface Design* by Sandy Scrivino (donated by Norma Gordon)

- *The Collection: A Novel of Couture Sewing* by Gioia Diliberto (donated by Betty Brees)
- *Innovative Sewing* by Gail Brown and Tammy Young (donated by Pat Plett)
- *The "Business" of Sewing* by Barbara Wright Sykes (donated by Pat Plett)
- *Speed Sewing* by Janice Saunders (donated by Pat Plett)
- *Serging for Babies* by Kathy McMakin (donated by Pat Plett)
- *Garments with Style* by Mary Mulari (donated by Pat Plett)

## Threads Renewals and Taunton Book/DVD Order

Leah will be sending in the Threads magazine order after the October meeting, so bring your checks! Threads subscriptions are 1 yr. \$26.36, 2 yr. \$43.96, 3 yr. \$63.16. Sew Stylish is available for 1 year only \$15.96. Again, if we get ten renewals or subscriptions, Taunton will renew our guild subscription for free.

Leah is also collecting orders for Taun-

ton books and DVDs and will send it in as soon as she receives the minimum of ten. She has a catalogue in the library, or you can use the online catalogue to find the books and DVDs you would like to order at 50% off. Leah will send this in as one large order, so please make out your checks, for the amount of the book/DVD purchase plus \$1 shipping for each item in your order, to Wichita Chapter ASG.

## On-Going Fundraisers

Don't forget about our two regular fund raising activities:

At the library table, we have magazines that have been donated by members for sale for 25 cents each or 4 for a dollar. Funds raised go to buy items for the library (like

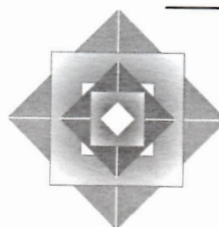
those new fitting DVDs from Taunton.)

At the Fabric FUNd table, we have fabric donated by members (maximum one per member per meeting, please) that can be purchased for \$1 per yard. Funds raised go into the general budget.



## Community Service Sewing

Organized by Georgia Whitlock and Michele Brakewood and supported by the loan of machines and space by Needles and Notions, our guild members have sewn many garments and blankets for preemie babies in Wichita-area hospitals. We'll have at least one more sewing session before the end of the year, but the date has not yet been set; we'll announce it in the monthly email.



ORIGINAL  
Sewing & Quilt  
E ♦ X ♦ P ♦ O<sup>SM</sup>  
*Returns!*

# Kansas City, MO

## October 23, 24 & 25, 2008

KCI-Expo Center

### Exhibit Hall Hours

10am-6pm Thurs./Fri.

10am-5:30pm Sat.

*Featuring...*

Class Lectures  
Workshops  
National Exhibits  
Great Shopping  
Fashion Shows  
How-to Demos  
Free Parking



## Become an Ambassador!

*Great perks when you volunteer...*

*Call for more details!*



Turn in this flyer at General Admission and receive another prize entry form when you purchase a general admission ticket.

For a FREE Event & Class Brochure

**sewingexpo.com**

**800.699.6309**

## Birthday Party!



Pat read the questions

The birthday party at our Sept meeting was a lot of fun. We played a game based on chapter trivia, ate cupcakes, and made adorable cupcake pincushions. Here's to another 10 great years!



Michele won a prize!



Theresa kept score

## Sloper Workshop



Sondra works on the back

We had several sloper workshops in July and August. Next step — learning to use them to make wonderfully-fitting clothes!



Jan and Barb make sure to get center front...front and center!



## Local Retailers

These local retailers offer discounts to ASG members on regularly priced fabric and notions. To receive your discount, show your ASG membership card at the time of purchase.

### A-1 Singer Sewing Center (15%)

685-0226  
1012 S Oliver  
Wichita KS  
A-1singer.com

### Country Cousins (10%)

85-243-4044  
114 W 6th St  
Concordia KS  
Countrycousinsfabrics.com

### Hancock Fabrics (10%)

7395 W Central 722-7554  
8131 E Kellogg 682-4574  
Wichita KS

### Helen Enox Fine Fabrics 10%)

405-685-1279  
1332 S W 59th  
Oklahoma City OK

### Hen Feathers (Punch Card)

652-9599  
110 N Rock Rd  
Wichita KS  
Henfeathersquilts.com

### Midwest Sewing Center (15%)

111 S Pattie 262-3438  
7348 W 21st 722-9737  
Wichita KS  
Midwestsew.com

### Needle Nook Fabrics (10%)

684-5989  
2714 Boulevard Plaza  
Wichita KS  
ndlnookfab.blogspot.com

### Prairie Quilts (10%)

684-5855  
1010 S Oliver  
Wichita KS  
Prairiequilts.com

### South End Sewing Center (20%)

262-6221  
2601 S Hydraulic  
Wichita KS  
Southendsewing.com

### Sunflower Quilts (10%)

788-5120  
405 N Osage Rd  
Derby KS  
Sunflowerquilts.com

### The Sewing Center (10% excluding machines and cabinets)

832-0819  
2101 W 21st St  
Wichita KS



**Remember to  
say thanks to  
these retailers  
for supporting  
ASG!**

## Hospitality for October and November

Sheryl Caryl, Pat Postlethwait and Norma Gordon have volunteered to bring refreshments in October. November hostesses will be Jan Adams, Mary Ann Esch, and Norma Gordon. Thanks, ladies!

## ASG Organization

Have you ever wondered what a "Regional Rep" is? ASG has three levels of organization:

The National level includes the Board of Directors, like our very own Denise Dias, who meet regularly and make organization-wide decisions.

The chapters are divided into Regions, each with a Regional Representative. Our Regional Rep is Suzie Perry, from Denver. Regional Reps work with individual chapters within the region to distribute information from National, encourage sharing of ideas and activities between region chapters, and to help chapters resolve issues. All Regional Reps have been chapter presidents, so they understand the challenges of managing a local chapter.

The chapter level is the one we're all most familiar with and is where the bulk of ASG activities are managed and conducted.

ASG National Headquarters, in Houston,



106 S. Main

Broken Arrow, OK  
74012

918.251.7094

Tulsa's unique shop  
for quilt & clothing  
fabrics, located at the  
corner of Broadway  
& Main, in downtown  
Broken Arrow.

**SewFlakes**  
*Fine Quilt & Fashion Fabrics*

has a few paid staff members who coordinate membership, publish the Notions magazine and the ASG.org website, and plan the national convention.

**American  
Sewing  
Guild**

## AMERICAN SEWING GUILD MEMBERSHIP FORM

### ADVANCING SEWING AS AN ART AND LIFE SKILL

Name \_\_\_\_\_

Address \_\_\_\_\_

City: \_\_\_\_\_ State: \_\_\_\_\_ Zip \_\_\_\_\_

Phone: ( ) \_\_\_\_\_ Date: \_\_\_\_\_

Fax: ( ) \_\_\_\_\_

E-Mail: \_\_\_\_\_

Sponsor: \_\_\_\_\_

☐ New Member — \$40.00

☐ Renewal — \$35.00

☐ Late Renewal — \$40.00

Make check payable to: **"American Sewing Guild"**

Charge To: MasterCard or Visa (Circle One)

Expiration Date \_\_\_\_\_

Account # \_\_\_\_\_

Signature \_\_\_\_\_

**Mail to:** ASG National Headquarters,  
9660 Hillcroft, Suite 510, Houston, TX 77096



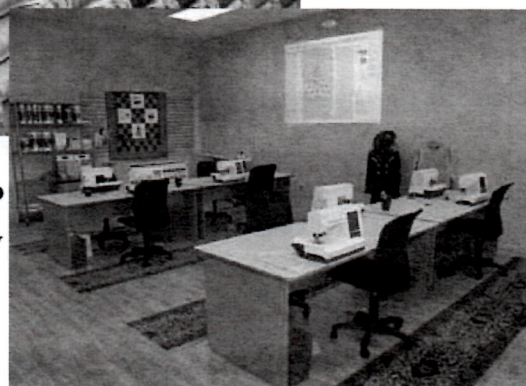


The Needles and Notions Creative Sewing Center Sewing Lounge is where you and friends can sew or get help with your projects.



Great Thread  
Selection

State of the Art Classroom Now Features the Top of the Line **PFAFF** creative vision for Every Student



New Market Square

2441 N. Maize Road, Suite 219

Wichita, KS 67205

# PFAFF

Visit Wichita's ONLY Supreme  
Pfaff Dealer.



316-722-5959

[info\\_wichita@needlesandnotions.com](mailto:info_wichita@needlesandnotions.com)



**THE Button Hole**  
FABRICS • NOTIONS • GIFTS

- Certified Pfaff sales & service
- Over 12,000 bolts
- Books & patterns
- 100's of notions
- Special orders welcome
- Classes from beginner to advanced
- Brighton jewelry
- Vera Bradley bags
- Crabtree & Evelyn
- Seasonal gifts
- We love bus tours

Mon-Fri 9am-6pm    Thurs 9am-8pm    Sat 9am-5pm

101 N. Main McPherson, KS 620-241-5257 1-866-QUILTER  
www.thebuttonhole.net email: sales@thebuttonhole.net

**Country Cousins**  
Quality Fabrics & Sewing Supplies

**Over 4,000 Bolts!**  
114 West 6<sup>th</sup> Street  
Concordia, KS 66901  
Phone: 785-243-4044  
www.CountryCousinsFabric.com

Monday-Friday 9-6, Thursday 9-8, Saturday 9-5

**HELEN ENOX**  
fine fabrics

Fabrics For All Occasions

BRIDAL AND FORMAL FABRICS  
1332 S.W. 59th  
Okla. City, OK 73119  
(405) 685-1279  
FAX: (405) 685-0764

DAYWEAR AND SPORTS FABRICS

HOURS Mon. - Sat. 10 - 6  
Sun. 1 - 5

316.652.9599  
M, W, F • 10-5:30  
T, T • 10-7 • Sat 10-5

**Hen Feathers**  
110 N. Rock Rd.  
Wichita, KS

Quilting & Scrapbooking

**Picket Fence Quilt Company**  
David & Lisa Johnson, Owners

Fabrics    Notions    Books  
Classes    Stencils    Patterns

316-558-8899  
7130 W Maple (Corner of Maple & Ridge Rd)  
Wichita KS 67209

**Prairie Quilts**

1010 S. Oliver, Wichita, KS 67218  
email: quiltsrfun@prairiequilts.com  
www.prairiequilts.com

Shirley Binder - Owner    316-684-5855

**NUTS & BOLTS**  
Quality FABRICS

**WHOLE BOLT SALES  
AT WHOLESALE PRICES!**

DOWNTOWN YODER IN HERITAGE SQUARE  
MON-SAT 9-5 • 620-465-2500

**THE SEWING CENTER**

2101 W. 21st ST.  
WICHITA, KS. 67203-2110  
(316) 832-0819

CHARLEY & BEY SEYFERT  
e-mail: kansasewbiz@prodigy.net

**SINGER** **elna**

NEW & USED SEWING MACHINES • REPAIR SERVICE • FABRICS  
KNITTING MACHINES • VACUUM CLEANERS • NOTIONS • HOME-OWNED

25 Years of Serving Wichita



Singer	White	Brothers	Pfaff
Approved	Approved	Approved	Approved
Dealer	Dealer	Dealer	Dealer

## A-1 SINGER SEWING CENTER

**Dan Beltz**  
Sales and Service  
316-685-0226

Park Lane Shopping Center

1012 S. Oliver

Wichita, KS 67218

1 (800) 725-0226 [www.A-1Singer.com](http://www.A-1Singer.com)



Living Air  
Purifying System

## Midwest Sewing & Vacuum



Bernina  
Baby Lock  
Janome  
Simplicity  
Eureka Sanitaire  
Hoover  
Panasonic

*We service what we sell.*

### Two Locations

#### 111 Pattie

Wichita, Kansas 67211

(316) 265-3438

9:30-5:30 M-F, 9-5 Sat.

**7348 W. 21st, Suite 108**

Wichita, Kansas 67205

(316) 722-9737

10-5:30 M-F, 10-5 Sat.

[www.midwestsew.com](http://www.midwestsew.com)



## Needle Nook Fabrics

Anne St. Clair – Owner since 1984

**Intimately Yours: Bras**

**That Fit (book)**

**Elite Bra Pattern**

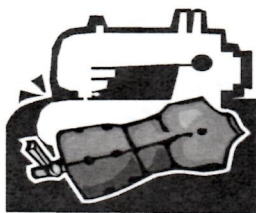
**Queen Elite Bra Pattern**

**Bra Workshops**

**Bra Fittings**

**Variety of Sewing**

**Classes**



10% Discount for ASG Members  
(regular priced fabrics only)

2714 Blvd. Plaza

Wichita, KS 67211

316-684-5989

[NdINookFab@aol.com](mailto:NdINookFab@aol.com)

Monthly Sew-In

2nd Saturday

4 pm—12pm midnight

(except June & July)

## Husqvarna VIKING

Books - Patterns

Notions - Fabrics - Classes

Hinterberg Hoops & Frames

Authorized Viking Sales & Service

*See Us For Your Quilting  
and Sewing Needs*

405 Osage Road

Derby, KS 67037

316-788-5120

[sunflowerquilts@sbcglobal.net](mailto:sunflowerquilts@sbcglobal.net)



Mon - Thur - 9:30 - 6:00

Fri - Sat - 9:30 - 5:00

Sun - 1:00 - 5:00

[www.sunflowerquilts.com](http://www.sunflowerquilts.com)

**AMERICAN SEWING GUILD, INC**

Wichita, KS Chapter  
P O Box 49539  
Wichita KS 67201-4539

[www.asgwichita.wordpress.com](http://www.asgwichita.wordpress.com)

June/July 2008

Non-Profit Org.  
U.S. Postage  
**PAID**  
Permit No. 923  
Wichita, Kansas



20090430  
BETTY BREES  
4860 N WYNDHAM RD  
PARK CITY KS 67219-5501

**ASG: Advancing Sewing As An Art And Life Skill**  
**Membership has its privileges!**

- Monthly meetings
- Educational programs from local and industry professionals
- Learn time-saving techniques
- How-to demonstrations
- Specialty Neighborhood Groups
- Receive encouragement and support
- Share and network with sewing friends
- Attend chapter-sponsored events at member-only rates
- Participate in fashion shows and sewing fairs
- Contribute to community outreach through sewing
- Get discounts at local and national stores

American  
Sewing  
Guild

