

Sewing's a Brees

The holidays are over, my sewing room is a mess from my gift making, the house is undecorated, spring feels far in the future, and I'm having trouble getting motivated to get back to the sewing room. Partly because I know I have to straighten up before I can do anything creative, but also I don't feel inspired. How or what inspires you back to the sewing machine?

Some articles I've read suggested doing some home dec to spice up the home which may look bland after taking down the holiday decorations. The only things that come to mind sound like work, not fun and creative.

Some of us participated in a one day retreat and that was great and I got some sewing done, but all I had to do was grab what I needed and go where it was neat and uncluttered. We plan on scheduling more one and two day retreats during the year and hope you will be able to join us. Meanwhile, if you have any good suggestions, let me know. For now I'll read my sewing magazines, sewing blogs and if all else fails clean my sewing room.

I am looking forward to our March 21 seminar. Nancy Nix-Rice, a nationally known wardrobe consultant and seamstress, will be here to share what colors, styles, and accessories are the most flattering for you and how to look instantly taller and slimmer (even if you have already given up on weight loss as a New Years Resolution). I had the pleasure of meeting Nancy Nix-Rice on two occasions last year. When Becky, Dora Mae, Julia, and I went to the regional meeting we met for the first time and I was impressed with her enthusiasm and energy. At ASG's National Convention I took a class from Nancy. It is similar to our seminar and I thoroughly enjoyed it as did the rest of the class besides learning several new things (any one of which would have been worth the price of admission). Be sure to look for the registration and info in this month's newsletter.

Besides attending the seminar, I hope you will consider joining me in attending the regional meeting in April and the National Convention in July. It is inspiring and energizing to meet with other ASG members. Closer to home, our CAB meets the fourth Tuesday of each month and you are always welcome.

Betty

Advisory Board

President

Betty Brees 838-3709
04120501@cox.net

Vice President/Newsletter

Julia Langel 733-4780
julialangel@cox.net

Vice President/Neighborhood Groups

Theresa Corle 689-6702
corle1@cox.net

Secretary

Pat Hernandez 722-9250
phernandez3@cox.net

Treasurer

Becky Wondra 722-0939
rlwondra1@cox.net

Membership

Shirley Binder 943-5063
sb1026049@onemain.com

Special Events

Barbara Bohm 788-5097
aalmanret@sbcglobal.net
Kenna Dice 321-5841
bdice@cox.net
Jan Adams (Food) 721-0448
j.d.adams@sbcglobal.net

Librarian/Historian

Leah Jones 620-596-2517

Publicity/Retail Liaison

Suzanne Mason 788-4552
S.mason1@cox.net

Education

Lynanne DeGarmo 755-0675
degarmokechi@yahoo.com

Hospitality

Norma Gordon 550-6110
bgordon4@cox.net

Community Service

Michele Brakewood 630-0858
sewfun350@aol.com
Georgia Whitlock 721-0855

Fabric FUNd

Penny Ruddle 263-4816
penr1208@cox.net

Membership Renewal

The National office will send you a renewal notice about 2 months before your membership expires. You can check your membership expiration date on the address label of each newsletter. If you don't receive a renewal notice, contact the membership chairwoman, or go to the National website, asg.org, where you can renew online.

Address Changes

If your address, phone number or email changes, please report the changes to both the local membership chair and to the National office (you can use the website at asg.org.)

New and Renewing Members

Welcome new members Sylvia Steinsouer, Valarie Fisher, and Nancy Bowie.

And welcome back to renewing members Sondra Schmittgens, Dorris Tomlin, Sharon Hill, Gretchen Sharp, Cheryl Davis, Julia Langel, Sallylou Coleman, Linda Kirby, Shirley Binder, Mary Ann Esch, Pat Behrns, and Kristie Patton.

Advertising Rates

This newsletter is published 6 times per year. We only accept sewing-related ads. Our rates are: 1/8 page—\$60/yr; 1/4 page—\$120/yr; 1/2 page—\$210/yr; 1 page—\$300/yr.

Nancy Nix-Rice — Saturday, March 21, 2009

We are excited to announce that Nancy Nix-Rice will be coming to Wichita next March 21. Nancy is a nationally-known wardrobe consultant with life-long home-sewing roots. She can teach you to know – before you sew – exactly which styles, fabrics and details will make you look and feel like a million. Nancy will lecture and have question and answer sessions on Saturday. Nancy will be available for personal consulting on Sunday for a fee determined by interested party and herself.

In her latest newsletter, she discusses accessories: Accessories are the icing on the cake. And a great way to freshen up your wardrobe without breaking the bank. But often they're the last thing a sewing enthusiast thinks of when she's building a wardrobe. And the reason why too many of our outfits look like "loving hands at home"

The most important accessories frame your face – pulling focus high on your body. Earrings, scarves and necklaces instantly create that all-important focal point... away from any figure challenge areas.

But that's not all. Accessories build outfits out of unexpected garment combinations. Almost any two colors you have any business wearing can look great together, provided you add a "link" – an accessory that includes both of the colors and reassures the viewer that this is an outfit – not just the only two pieces you had clean today. Besides

linking two colors in an outfit, accessories can connect the garment colors back to YOU.

So how do you build a wardrobe of the right accessories? Start by collecting scarves and necklaces that repeat two or more of the colors that dominate your wardrobe. Color mixes that include either your hair or eye color are especially effective. Then use a few of these tricks to maximize their versatility:

1. Use extenders to vary necklace lengths to fit different necklines. Simply a 6" chain with a clasp – an extender connects with the clasp and loop of an existing necklace to make a choker feel longer, or to make a too-long necklace able to double-wrap into a shorter style.

2. Layer 2 necklaces together for a bolder look. Let one hang inside the other or twist the strands for a chunky look.

3. Add a pin to a strand of beads to create a new necklace without spending a penny.

4. Use a chiffon square instead of the usual chain to hold a bold pendant.

5. Fold a 14" square scarf in half diagonally and roll from point to fold, creating a tube. Tie a soft overhand knot at the midpoint of the tube, then knot the ends behind your neck.

Registration Form — Nancy Nix-Rice

Name:

Address:

Phone:

Email:

Fee: \$30, including lunch

Time: 9 am to 4 pm

Please make checks to ASG Wichita Chapter.

Please mail registration and fee to Becky Wondra, 1663 Murray, Wichita, KS 67212

February Events

General Meeting — February 3

1:30 and 7, Extension Center

Beverly Seyfort from the Sewing Center will be presenting a "New Range of Interfacing for Home Sewers." Bring your items for Sew and Share.

Betty Brees, 838-3709

Hutchinson Neighborhood Group — February 5

7pm to 9pm, Delos Smith Center, 101 W. 1st

Michelle Eis will discuss moveable pockets. Bring wrapped fabric to exchange in the "Unloved Fabric Challenge" and pictures of your personal fabric stash.

Marion Cathcart, 620-669-1265

West Side Neighborhood Group — February 17

9 a.m. until 4 p.m. (lunch on your

own or with group), Extension Center, Bison Room

We'll be making a 20-minute pillowcase for our ASG community service project.

Denise Dias, 722-7721 x116

East Side Neighborhood Group — February 17

7 pm. Needle Nook Fabrics

Meeting topic to be announced.

Theresa Corle, 689-6702

CAB Meeting — February 24

Derby Neighborhood Group — February 27

7 pm. Woodlawn United Methodist Church, 431 S Woodlawn, Room 11E

Theresa Corle will discussing zippers and casseroles.

Nona Mackey, rmackey5@cox.net, or 316-253-2910

Doll Challenge

Our December Doll Challenge was a great success! As you can see at right, we had lots of toys — bears and bunnies, dinosaurs and dolls — brought to the afternoon meeting (and more were brought to the evening meeting). Shirley Binder won the free ticket to the Nancy Nix-Rice event in March.

The toys were given to the Donna Sweet emergency fund and the Ryan White title 3 program. We're told the kids were very grateful!

Thanks to all who made or brought toys!

March Events

General Meeting — March 3

1:30 and 7, Extension Center

Martha Flanagan will tell us everything we want to know about bamboo; she's bringing examples in bedding, bath, kitchen accessories, clothing & textiles, and flooring. Bring your items for Sew and Share.

Betty Brees, 838-3709

Newsletter Deadline — March 6

Please send information for April and May.

Hutchinson Neighborhood Group — March 7

8am—6pm, HJC Lockman Hall, 2nd Floor

We're having an all-day Mini Sew-a-Thon Retreat! Bring a sack lunch and snacks. Don't forget your Sew and Tell.

Marion Cathcart, 620-669-1265

East Side Neighborhood Group — March 17

7 pm. Needle Nook Fabrics

Meeting topic to be announced.

Theresa Corle, 689-6702

West Side Neighborhood Group — March 17

9 a.m. until 4 p.m. (lunch on your own or with group), Extension Center, Bison Room

We'll be making Rolynesters!

Denise Dias, 722-7721 x116

CAB Meeting — March 24

Derby Neighborhood Group — March 26

7 pm. Woodlawn United Methodist Church, 431 S Woodlawn, Room 11E

Lyla and Helen Flipppo will show us how to make an envelope purse.

Nona Mackey, rmackey5@cox.net, or 316-253-2910



In the Library

Items in our library include books, videos, DVDs, magazines and patterns. These items may be checked out for one month at a time. Due to high demand, only one DVD or video may be checked out per month; DVDs and videos must be returned the following month and may not be renewed until the end of the meeting so that others have a chance to check them out.

There is a charge of \$1 per item per month for items returned late. NEW: Any item not returned within 6 months will be considered lost and the member will be responsible for replacing it.

New magazines

- *McCall's Quilting*: Feb 2009

- *Stitch*: Winter 2008
- *Quilting Arts*: Dec/Jan 2009
- *Sew News*: Dec/Jan 2009
- *Belle Armoire*: Jan/Feb 2009
- *Sew Simple*: Jan 2009

New DVDs

- *Threads Industry Insider Techniques* Vol 1 and 2

Thread Fitting DVD Series:

- *Waist and Hips*
- *Bust*
- *Arms*
- *Torso*

Embellishing January!

The gals from Sunflower Quilts sure gave us a lot of things to think about! From hot-fix crystals to foil, drinking straws to Angelina, they showed us how to embellish almost any textile project with pizzazz!



On-Going Fundraisers

Don't forget about our two regular fund raising activities:

At the library table, we have magazines that have been donated by members for sale for 25 cents each or 5 for a dollar. Funds raised go to buy items for the library (like

those new fitting DVDs from Taunton.)

At the Fabric FUNd table, we have fabric donated by members (maximum one per member per meeting, please) that can be purchased for \$1 per yard. Funds raised go into the general budget.

Local Retailers

These local retailers offer discounts to ASG members on regularly priced fabric and notions. To receive your discount, show your ASG membership card at the time of purchase.

A-1 Singer Sewing Center (15%)

685-0226
1012 S Oliver
Wichita KS
A-1singer.com

Country Cousins (10%)

85-243-4044
114 W 6th St
Concordia KS
Countrycousinsfabrics.com

Hancock Fabrics (10%)

7395 W Central 722-7554
8131 E Kellogg 682-4574
Wichita KS

Helen Enox Fine Fabrics 10%)

405-685-1279
1332 S W 59th
Oklahoma City OK

Hen Feathers (Punch Card)

652-9599
110 N Rock Rd
Wichita KS
Henfeathersquilts.com

Midwest Sewing Center (15%)

111 S Pattie 262-3438
7348 W 21st 722-9737
Wichita KS
Midwestsew.com

Needle Nook Fabrics (10%)

684-5989
2714 Boulevard Plaza
Wichita KS
ndlnookfab.blogspot.com

Prairie Quilts (10%)

684-5855
1010 S Oliver
Wichita KS
Prairiequilts.com

South End Sewing Center (20%)

262-6221
2601 S Hydraulic
Wichita KS
Southendsewing.com

Sunflower Quilts (10%)

788-5120
405 N Osage Rd
Derby KS
Sunflowerquilts.com

The Sewing Center (10% excluding machines and cabinets)

832-0819
2101 W 21st St
Wichita KS



**Remember to
say thanks to
these retailers
for supporting
ASG!**

Hospitality for February and March

February hostesses will be Dixie Oatsvall, Wanita Schmidt, and Marilyn Christiansen.

March hostesses will be Michele Brakewood, Val Fisher, and Suzanne Mason.

Thread Questions Answered

YLI Corp has created a free booklet called "A Thread of Truth: A factual look at sewing thread" that presents some basic information about sewing thread for home sewists. The 32-page booklet covers subjects like how thread is made, the various types of thread, and sizing and weight systems. It also includes information on needles (a natural pairing!) and an extensive glossary

You can find the booklet at www.ylicorp.com (click on "Thread of Truth brochure" toward the bottom of the column on the left).



106 S. Main

Broken Arrow, OK
74012

918.251.7094

Tulsa's unique shop
for quilt & clothing
fabrics, located at the
corner of Broadway
& Main, in downtown
Broken Arrow.

SewFlakes

Fine Quilt & Fashion Fabrics



**American
Sewing
Guild**

AMERICAN SEWING GUILD MEMBERSHIP FORM

ADVANCING SEWING AS AN ART AND LIFE SKILL

Name _____

Address _____

City: _____ State: _____ Zip: _____

Phone: () _____ Date: _____

Fax: () _____

E-Mail: _____

Chapter: _____

Mail to: ASG National Headquarters,
9660 Hillcroft, Suite 510, Houston, TX 77096

☐ New Member — \$40.00

☐ Renewal — \$35.00

☐ Late Renewal — \$40.00

Make check payable to: **"American Sewing Guild"**

Charge To: MasterCard or Visa (Circle One)

Expiration Date _____

Account # _____

Signature _____



PFAFF

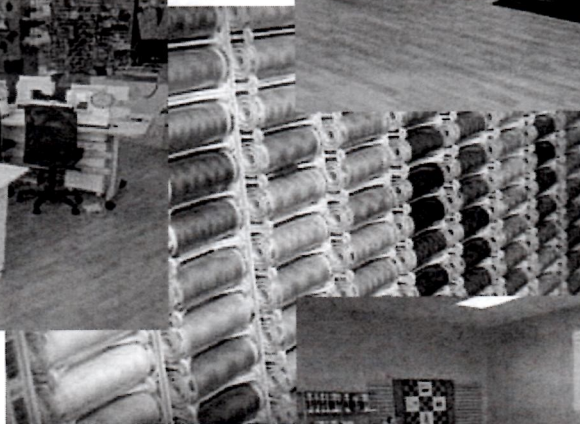
Visit Wichita's ONLY Supreme
Pfaff Dealer.



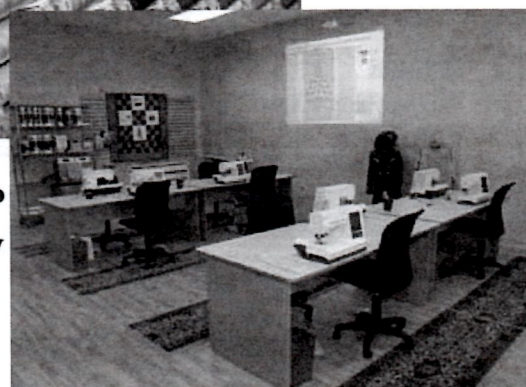
The Needles and Notions Creative Sewing Center Sewing Lounge is where you and friends can sew or get help with your projects.



Great Thread
Selection



State of the Art Classroom Now Features the Top of the Line **PFAFF** creative vision for Every Student



New Market Square

2441 N. Maize Road, Suite 219

Wichita, KS 67205

316-722-5959

info_wichita@needlesandnotions.com

THE Button Hole
FABRICS • NOTIONS • GIFTS

- Certified Pfaff sales & service
- Over 12,000 bolts
- Books & patterns
- 100's of notions
- Special orders welcome
- Classes from beginner to advanced
- Brighton jewelry
- Vera Bradley bags
- Crabtree & Evelyn
- Seasonal gifts
- We love bus tours

Mon-Fri 9am-6pm Thurs 9am-8pm Sat 9am-5pm

101 N. Main McPherson, KS 620-241-5257 1-866-QUILTER
www.thebuttonhole.net email: sales@thebuttonhole.net

Country Cousins
Quality Fabrics & Sewing Supplies

Over 4,000 Bolts!
114 West 6th Street
Concordia, KS 66901
Phone: 785-243-4044
www.CountryCousinsFabric.com

Monday-Friday 9-6, Thursday 9-8, Saturday 9-5

HELEN ENOX
fine fabrics

Fabrics For All Occasions

BRIDAL AND FORMAL FABRICS
1332 S.W. 59th
Okla. City, OK 73119
(405) 685-1279
FAX: (405) 685-0764

DAYWEAR AND SPORTS FABRICS

HOURS Mon. - Sat. 10 - 6
Sun. 1 - 5

Hen Feathers
QUILT SHOP

Store Hours: MTWF
10-5:30
TH 10-7

110 N. Rock Road
Wichita, KS 67206
(Douglas & Rock)
316-652-9599
www.henfeathersquilts.com

*Supplies *Classes *Clubs

Where the cool chicks shop!

Picket Fence Quilt Company
David & Lisa Johnson, Owners

Fabrics Notions Books
Classes Stencils Patterns

316-558-8899
7130 W Maple (Corner of Maple & Ridge Rd)
Wichita KS 67209

Prairie Quilts

1010 S. Oliver, Wichita, KS 67218
email: quiltsrfun@prairiequilts.com
www.prairiequilts.com

Shirley Binder - Owner 316-684-5855

NUTS & BOLTS
Quality FABRICS

**WHOLE BOLT SALES
AT WHOLESALE PRICES!**
DOWNTOWN YODER IN HERITAGE SQUARE
MON-SAT 9-5 • 620-465-2500

NOW OPEN!

THE SEWING CENTER

2101 W. 21st ST.
WICHITA, KS. 67203-2110
(316) 832-0819

CHARLEY & BEY SEYFERT
e-mail: kanasewbiz@prodigy.net

SINGER
APPROVED DEALER

eha

NEW & USED SEWING MACHINES • REPAIR SERVICE • FABRICS
KNITTING MACHINES • VACUUM CLEANERS • NOTIONS • HOME-OWNED

25 Years of Serving Wichita

Singer
Approved
Dealer

Brothers
Approved
Dealer

Pfaff
Approved
Dealer

A-1 Singer Sewing Center

Dan Beltz

"We sell the best and service the rest!"

316-685-0226

Park Lane Shopping Center
1012 S. Oliver
Wichita, KS 67218
1 (800) 725-0226
www.A-1Singer.com

Midwest Sewing & Vacuum

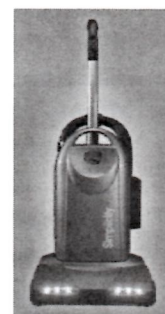


Bernina
Baby Lock
Janome
Simplicity
Eureka Sanitaire
Hoover
Panasonic

We service what we sell.

Two Locations

111 Pattie
Wichita, Kansas 67211
(316) 262-3438
8:30-5:30 M-F, 9-4 Sat.
7348 W. 21st, Suite 108
Wichita, Kansas 67205
(316) 722-9737
10-5:30 M-F, 10-4 Sat.
www.midwestsew.com



NEEDLE NOOK FABRICS

CELEBRATE MY
25th ANNIVERSARY

MONTHLY SPECIALS

25% OFF

Feb 2-7 Scuba Knit
Feb 28-Mar 7 Slinky Knit
Apr 4-11 Interlock, Jersey
Or Ribbed Knit
May 2-9 Lace or Stretch Lace
June 6-13 Nylon/Lycra
Activewear
July 3-11 Stretch Woven
Aug 1-8 Kwik Sew or Burda
Patterns
Sept 4-12 Fleece
Oct 3-10 Flannel
Nov 7-14 Panne Velour or
Velvet
Dec 5-12 Notions

10% Discount for
ASG members
(regular priced
fabrics only)

SEWING CLASSES
BRA FITTINGS
KWIK SEW PATTERNS
BURDA PATTERNS / MAGAZINE
SEW SYLISH MAGAZINE
THREADS MAGAZINE

316-684-5989
2714 Blvd Plaza
Wichita, KS 67211
NDLNOOKFAB@AOL.COM
Mon-Fri 10am-5:30pm
Sat 10am-4pm

Check out of Blog Site for the latest Class Schedule
and updates. NDLNOOKFAB.BLOGSPOT.COM



Husqvarna VIKING

Books - Patterns
Notions - Fabrics - Classes
Hinterberg Hoops & Frames
Authorized Viking Sales & Service

*See Us For Your Quilting
and Sewing Needs*

405 Osage Road
Derby, KS 67037
316-788-5120

sunflowerquilts@sbcglobal.net

**Sunflower
Quilts**

Mon - Thur - 9:30 - 6:00
Fri - Sat - 9:30 - 5:00
Sun - 1:00 - 5:00

www.sunflowerquilts.com

AMERICAN SEWING GUILD, INC

Wichita, KS Chapter
P O Box 49539
Wichita KS 67201-4539

www.asgwichita.wordpress.com

February/March 2009

NON-PROFIT ORG.
U.S. POSTAGE
PAID
WICHITA, KS
PERMIT NO. 923

ASG: Advancing Sewing As An Art And Life Skill
Membership has its privileges!

- Monthly meetings
- Educational programs from local and industry professionals
- Learn time-saving techniques
- How-to demonstrations
- Specialty Neighborhood Groups
- Receive encouragement and support
- Share and network with sewing friends
- Attend chapter-sponsored events at member-only rates
- Participate in fashion shows and sewing fairs
- Contribute to community outreach through sewing
- Get discounts at local and national stores

