
Sewing's A Brees

Spring did arrive in Kansas bringing along with it lots of wind and allergies. If these have been affecting you hopefully you are able to stay indoors and do lots of sewing either using the sloper that Lyla and Sondra showed us or maybe you have gotten excited about the computer program for drafting patterns that Vicky demonstrated at the May meeting. Or, maybe you have just decided to work on those UFOs.

June will be a busy month for us. The General meeting program will be on the next step using your sloper. We will have a booth at the Prairie Quilt Guild's bi-annual quilt show June 25-29. Several have volunteered to loan items for display. Please bring them to the June meeting, if at all possible, with your name attached. We will need volunteers to help set up the booth on June 24. Let me know if you are available. Also, if you haven't signed up to spend some time in the booth promoting ASG it's not too late. Right after the show is our next two day retreat, June 29-30. Come work on your own project, chemo caps and help make pincushions for the 4-H Style Review.

June also brings with it time to appoint the nominating committee and thoughts of elections. If you are available to serve on the nominating committee please let me know. Be thinking about who you would like to see nominated for the five offices. We have a lot of talented ladies and we could use their services.

If you haven't registered for the ASG national conference in Atlanta Georgia August 5-8 there is still time to do that. The schedule is online at asg.org or you can send \$3.00 to the national office for a printed copy. Anne and her ladies will be teaching. Denise, Michelle and I are registered so please join us – it's a fun time besides being educational.

Sew much, rip less

Betty

ASG on the Web

Find current information about ASG activities on the Internet:

- National ASG site: www.asg.org
- Wichita ASG blog:
www.asgwichita.wordpress.com

- National ASG Facebook page: American Sewing Guild
- Wichita ASG Facebook page: American Sewing Guild Wichita, KS Chapter

Advisory Board**President**

Betty Brees 838-3709
04120501@cox.net

Vice President/Newsletter

Julia Langel 733-4780
julialangel@cox.net

Vice President/Neighborhood Groups

Theresa Corle 689-6702
corle1@cox.net

Secretary

Pat Hernandez 722-9250
phernandez3@cox.net

Treasurer

Becky Wondra 722-0939
rlwondra1@cox.net

Membership

Shirley Binder 943-5063
sb1026049@onemain.com

Special Events

Kenna Dice (Speaker) 316-321-5841
thinble2@cox.net
Ginny Perott (Retreats) 316-377-9407
ginnyperott@cox.net

Jan Adams (Food) 721-0448
J.d.adams@sbcglobal.net

Librarian/Historian

Leah Jones 620-596-2517
Beryl Silkey 682-0017
bchrysalis@sbcglobal.net

Publicity/Retail Liaison

Vicky Islietson 529-1565
lvisliet@sbcglobal.net

Education

Lynanne DeGarmo 755-0675
degarmokechi@yahoo.com

Hospitality

Marsha Volz 789-9193
1003lakeside@cox.net

Community Service

Michele Brakewood 630-0858
sewfun350@aol.com

Fabric FUND

Penny Ruddle 263-4816
penr1208@cox.net

Membership Renewal

The National office will send you a renewal notice about 2 months before your membership expires. If you don't receive a renewal notice, contact the membership chairwoman, or go to the National website, asg.org, where you can renew online.

Address Change

If your address, phone number or email changes, please report the changes to both the local membership chair and to the National office (you can use the website at asg.org.)

New and Renewing Members

Welcome new members Cindy Zajowski, Rosalind Bush and Judy Fronterhouse.

And welcome back to renewing members: Judy Baldrige, Audrey Bennett, Shirley Binder, Barbara Blackman, Nancy Boewe, Barbara Bolm, Sharon Chesmore, Gerry Criswell, Cheryl Davis, Kenna Dice, Linda Farrier, Martha Flannagan, Lyla Flippo, Norma Gordon, Cynthia Jesseph, Mary Malone, Elsa McMaster, Jean Ann Melia, Jean Mulford, Marilyn Newkold, Ginny Perott, Patricia Schwening, Gretchen Sharp, Sylvia Steinshouer, Marsha Volz, Linda Wagner, Donna Witek, Jacquelyn Proffitt, Dora Mae Mooberry, Jayne Miller, Doris Schwartz, Valerie Fisher, Phyllis Calvert, Marilyn Christensen, Nancy Woodson, Betty Brees, Marilyn John, Nona Mackey and Jackie Clark.

Advertising Rates

This newsletter is published 6 times per year. We only accept sewing-related ads. Our rates are: 1/8 page—\$60/yr; 1/4 page—\$120/yr; 1/2 page—\$210/yr; 1 page—\$300/yr.

ASG members may place classified ads for 10 cents per word.

Short Plump Gals Have Their Day! By Sondra Schmittgens



Wichita, KS Chapter: On March 19th Kathleen Cheetham rode into our sleepy little town and awakened us to the joys of being short and a little on the . . . hefty side.

Kathleen Cheetham is the woman behind the 'Petite Plus' pattern line and author of the book, 'Perfect Plus'. If you are thinking of giving her patterns a try, I suggest starting with her book. It contains several patterns and many style and alteration suggestions for a mere \$25. On Friday night she treated us to an inspiring trunk show. She had all of her patterns represented in a variety of sizes in many fabrics with optional treatments. Her patterns are simple, versatile styles that can be dressed up or down. Kathleen allowed us to try on all of her garments and I was surprised to find that many fitted almost perfectly to my 5'3" and 155 lb frame. That was a very new ex-



perience for me. On Saturday we had a day long workshop that included working on miniature paper patterns to address our fitting problems. Yes, our fitting problems.

Seldom do you have the opportunity to bring your own fitting frustrations, get an expert opinion, and also a working alteration in miniature for yourself. I had two fitting questions that I had grown completely frustrated with and both were answered.

I have noticed, as we get older, we are shoved into bodies we are completely unprepared for and that do not at all fit in with our mental picture of ourselves. Most of us get shorter and many of us get plumper. So often we settle for ill fitting unattractive clothing because we don't know how to account for this change. I believe that the 'Petite Plus' patterns are going to end that for me. As I was watching Kathleen Cheetham explain alterations, the woman next to me leaned over and said, 'See how she works and moves and her clothes move with her and don't gap open? That's what I want!' Gosh, that's what I want too... and pretty. They have to be pretty!

As she rode off into the distance a wondering voice was heard to say, 'Who was that short stranger?'



June Events

General Meeting — June 8

1:30 pm and 7 pm, Extension Center

CAB members will make patterns for blouses from their slopers. Bring your items for Sew and Share.

Betty Brees, 838-3709

Computerized Pattern Drafting Neighborhood Group — June 14

7 pm. Vicky Is liefson's house

We'll be organizing a new neighborhood group (see next page).

Vicky Is liefson, 529-1565

East Side Neighborhood Group — June 15

7 pm. Needle Nook Fabrics

Judy Troyer will be showing how to make no-sew bags.

Theresa Corle, 689-6702

CAB Meeting — June 22

1:30, Ingle Room, Extension Center

Derby Neighborhood Group — June 24

7 pm. Woodlawn United Methodist Church, 431 S Woodlawn, Room 11E

Doris Schwartz will discuss sewing hints and ideas; Lyla Flippo will demonstrate her new Sashiko machine. Also, bring your Show and Tell

Marsha Volz 789-9193

Connecting Threads Quilt Show — June 25-27

Century II

We'll have a booth. If you're going, stop by and say hi! If you can help staff the booth, volunteer at the June general meeting. If you have garments for display, bring it to the June meeting.

Betty Brees, 838-3709

Retreat — June 29-30

9 am to 5 pm. Extension Center

We will be working on cupcake pincushions for the 4-H style review plus whatever individuals want to work on. We will also be experimenting with slopers. We will go out for lunch. Bring snacks if you wish.

Betty Brees, 838-3709

Our Year of Fit Continues!

We've gotten a good start on our year of fit! Lila showed us how she uses her sloper and Vicky showed us how she developed a sloper with Pattern Master Boutique and uses that to design new patterns on the computer.

Next, we're going to do some hands-on work with our slopers. In June and August, members of the CAB are going to show how to design a blouse using the instructions in a series of Threads articles written by Kathleen Cheetham. If you have Threads back issues

and would like to follow along, dig out Threads June 2008 and August 2008.

(Remember, Connie Crawford defines a sloper as "a basic pattern, without style lines or seam allowances, developed from a dress form, live model, or manufacturer's specific measurements. Used as the foundation for a specific silhouette or fit in a new design." Slopers are also called blocks. So, basically, **your** slopers are basic patterns developed from **your** body, to use as foundations for a design with **your** silhouette.)

July Events

General Meeting — No meeting in July

Betty Brees, 838-3709

Newsletter Deadline — July 9

Please send information about August and September.

East Side Neighborhood Group — July 20

7 pm. Needle Nook Fabrics

Topic to be announced.

Theresa Corle, 689-6702

Derby Neighborhood Group — July 22

7 pm. Woodlawn United Methodist Church, 431 S Woodlawn, Room 11E

Aurelia Beck will present "Christmas in July" ideas. Bring your Show and Tell.

Marsha Volz 789-9193

CAB Meeting — July 27

1:30, Ingle Room, Extension Center

A New Neighborhood Group

After Vicky's presentation last month, we thought it would be fun to start a new group for computerized pattern drafting. The purpose of this group will be to help each other with getting started in software, measuring, design choices and inspiration. Any brand of software is welcome.

The first meeting will be Monday, June 14 at 7 p.m. at Vicky's house. Please call or email Vicky if you plan to attend so you can get directions and so Vicky knows how many chairs she needs. (316) 529-1565; intimesdesign@yahoo.com

Community Service Projects

For 2010, we have chosen two community service projects. We will continue to make chemo caps to donate to area cancer patients.

We will also be making toys and clothes for children.

We will be working on these all year, so bring your items to any general meeting. (If you're on Facebook, check out the tickers showing our current item counts!)



Kenna and Vicky with a dress made from a computer-drafted pattern

In the Library

Items in our library include books, videos, DVDs, magazines and patterns. These items may be checked out for one month at a time. Due to high demand, only one DVD or video may be checked out per month; DVDs and videos must be returned the following month and may not be renewed until the end of the meeting so that others have a chance to check them out.

There is a charge of \$1 per item per month for items returned late. Any item not returned within 6

months will be considered lost and the member will be responsible for replacing it. A complete listing of library holdings is available at the library table during our monthly meetings or from Leah at 620-596-2517.

New Books

- *Jackets for Real People*, Maria Alto, Susan Neal and Patti Palmer

April Stash Challenge



We cleaned out our stashes! Our Spring challenge was to make something out of stash and we saw lots of creative garments.



Local Retailers

These local retailers offer discounts to ASG members on regularly priced fabric and notions. To receive your discount, show your ASG membership card at the time of purchase. Be sure to thank them for supporting ASG!

A-1 Singer Sewing Center (15%)

685-0226
1012 S Oliver
Wichita KS
A-1singer.com

Fabric Essentials (10%)

85-243-4044
114 W 6th St
Concordia KS
Countrycousinsfabrics.com

Hancock Fabrics (10% on some things)

7395 W Central 722-7554
8131 E Kellogg 682-4574
Wichita KS

Helen Enox Fine Fabrics 10%)

405-685-1279
1332 S W 59th
Oklahoma City OK

Hen Feathers (Punch Card)

652-9599
110 N Rock Rd
Wichita KS
Henfeathersquilts.com



Midwest Sewing Center (15%)

111 S Pattie 262-3438
7348 W 21st 722-9737
Wichita KS
Midwestsew.com

Needle Nook Fabrics (10%)

684-5989
2714 Boulevard Plaza
Wichita KS
ndlnookfab.blogspot.com

Prairie Quilts (10%)

684-5855
1010 S Oliver
Wichita KS
Prairiequilts.com

Sew Much (10%)

558-5739
535 W. Douglas
Sewmuchonline.com

Sunflower Quilts (10%)

788-5120
405 N Osage Rd
Derby KS
Sunflowerquilts.com

The Sewing Center (10% excl. machines)

832-0819
2101 W 21st St
Wichita KS

Gilda Chisholm is 90!

The family of Gelda Chism would like to invite her sewing friends to join them in celebrating her 90th birthday:

Saturday, July 31st, 2010

2:00 p.m. to 4:00 p.m.

To be held at the

Girl Scouts of Kansas Heartland headquarters

360 Lexington Road

Wichita, KS 67218

No gifts but memories are welcome.

On-Going Fundraisers

Don't forget about our two regular fund raising activities:

At the library table, we have magazines that have been donated by members for sale for 25 cents each or 5 for a dollar. Funds raised go to buy items for the library (like those new fitting DVDs from Taunton.)

At the Fabric FUNd table, we have fabric donated by members (maximum one per member per meeting, please) that can be purchased for \$1 per yard. Funds raised go into the general budget.

A Word from National Headquarters

ASG SPECIAL OFFERS CAN PAY FOR YOUR ASG MEMBERSHIP !!!

Your ASG membership more than pays for itself when you take advantage of the many generous discounts and other offers from our sewing industry supporters. **Over 60 Special Offers** from ASG sponsors and advertisers in the Spring issue of "Notions" have just been posted on the ASG Web site (www.asg.org). That includes **18 updated listings, plus 6 brand new offers**. The complete list includes:

**** 10-to-20% online and in-store discounts from 9 fabric sources**

**** \$75 discount on 2010 workshops with a popular sewing instructor**

**** 10-to-40% discounts on hundreds of machine embroidery designs**

**** FREE admission to a California sewing festival, including FREE workshops**

**** 10-to-15% discounts from 13 of your favorite pattern designers**

**** other NEW offers from:**

JSM Tailoring Tools: 10% discount on sewing & design tools from Joyce Simons Murphy

Leisure Arts: free book with purchase from a prolific pattern book publisher

Silhouette Patterns: four new patterns for only \$29.95 (usually \$14 each)

Vogue Fabrics: earn bonus points to apply to future fabric purchases

**** other 20% discounts from:**

Colonial Needle

Mill Direct Textiles (the Polartec people!)

ScrapSmart

SewkeysE

All of these Special Offers are available ONLY to ASG members, and many are NOT printed in "Notions" ads, **ONLY LISTED ON THE ASG WEB SITE. Please take advantage of them! These companies need to know that ASG members appreciate their support.** Be sure to tell them that when you order!

To see these offers, log onto www.asg.org and click on "Members Only." Once you are in the Members Only area, click on "Special Offers." There you'll find discounts on sewing products, publications and events, free shipping, and lots more. If you haven't visited the Special Offers page of the ASG Web site lately, do it now! It's just one more reason it really "pays" to be an ASG member!

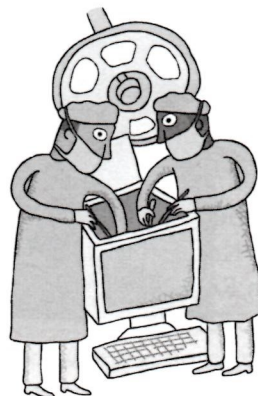
A Word from the Editor's Computer

This is a Public Service Announcement on behalf of the editor's computer:

**BACK UP YOUR COMPUTER DATA!
NOW!**

Yes, YOU! Yes, ALL of you! Yes, NOW!

We now return you to your regularly scheduled sewing news...



Fashion Field Trips

Two Kansas museums are having fashion-related exhibits this summer.

The Wichita-Sedgwick County Historical Museum is presenting "The French Connection: Fashions from Paris to Wichita" through the summer. The exhibit will include French clothes from the 1880s to the 1980s, including designs by Jean Patou, Nina Ricci, Christian Dior, Chanel, and Louis Feraud. There is more information about the museum (but not about the exhibit) at wichitahistory.org.

The Nelson-Atkins Museum of Art, in Kansas City, has the exhibit *Edward Steichen—In High Fashion: The Condé Nast Years 1923-1937*, which will feature approximately 150 works by one of the twentieth century's leading figures in photography, during his tenure as chief photographer for Condé Nast's magazines, *Vogue* and *Vanity Fair*. This exhibit runs until July 25. There

are a couple of presentations associated with the exhibit: a lecture on Chanel on Saturday, June 12, and a lecture on the photographer's career on Saturday, July 17. We might want to time our trip to hear one of these.

Wouldn't it be fun to see these together? Let's organize some field trips! For the local trip, we could meet somewhere for lunch, then visit the museum. For the Kansas City trip, we could make a day of it — car-pool up in the morning, see the exhibit, have lunch on the Plaza, and then ... since we're there, we might as well go to the fabric store!

If you are interested in either of these field trips, contact Julia at 733-4780 or julialangel@cox.net.



American Sewing Guild CHAPTER MEMBERSHIP FORM

Name _____
Address _____
City _____ State _____ Zip _____
Phone (____) _____ Date _____
E-mail _____

Return to:



The American Sewing Guild
9660 Hillcroft, Suite 510, Houston, TX 77096
PH: (713) 729-3000 • FAX (713) 721-9230
Email: info@asg.org • Website: www.asg.org

(Please allow 4-6 weeks for processing)

☐ **New Chapter Member** - \$50.00

Chapter nearest you (City/State): _____

☐ **Renewal** - \$45.00 (If received **before** expiration date)

☐ **Late Renewal** - \$50.00 (If received **after** expiration date)

How did you hear about ASG?

☐ Online ☐ ASG Member ☐ Store ☐ Sewing Expo

☐ Magazine _____ ☐ Other _____

☐ Check enclosed payable to:
"American Sewing Guild"

☐ Please bill my **MasterCard / VISA** (Circle one)

Account Number _____

Expiration Date _____

Signature _____

FABRIC Essentials

(formerly Country Cousins)

**Over 5,000 bolts
of fabric inspiration!**

Fashion Fabric, Quilting Cotton, Batiks,
Upholstery & Home Dec, Flag Nylon, Flannel,
Fleece, Books, Patterns, Notions, Kits, Block-
of-the-Month Clubs & More!

Tour Groups Welcome!
(Please call and schedule in advance)

Hours: Tues-Fri 12-6, Thur 12-7, Sat 10-5

**116 W 6th St, Concordia, KS
785-243-4044**



Store Hours: MTWF
10-5:30
TH 10-7

110 N. Rock Road
Wichita, KS 67206
(Douglas & Rock)

316-652-9599

www.henfeathersquilts.com


*Supplies *Classes *Clubs

Where the cool chicks shop!

Picket Fence Quilt Company
David & Lisa Johnson, Owners

Fabrics Notions Books
Classes Stencils Patterns

316-558-8899
7130 W Maple (Corner of Maple & Ridge Rd)
Wichita KS 67209




SewFlakes

fine quilt & fashion fabrics

106 S. Main
Broken Arrow, OK 74012
918.251.7094
sewflakes@inbox.com
www.sewflakesfabrics.com

Conveniently located just off
Highway 51, 15 minutes east of
Tulsa, Oklahoma.

Let us be your one stop shop, for
the best selection in quilting fab-
rics, fashion fabrics, and sewing
machine sales and repair. From
Linda Lee's Sewing Workshop
kits, to our own fashion kits
that include fabric, pattern,
thread, and buttons- to our
quilt kits and Block of the
Month programs.

Come sew with us!

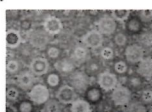
BERNINA



Liberty Shirt Kit
Project Sewing Workshop



Denim Jacket Kit
SewFlakes



Paperweights BOM



Star Block Kit

Prairie Quilts



1010 S. Oliver, Wichita, KS 67218

email: quiltsrfun@prairiequilts.com

www.prairiequilts.com

Shirley Binder - Owner

316-684-5855

THE SEWING CENTER

2101 W. 21st ST.
WICHITA, KS. 67203-2110
(316) 832-0819

CHARLEY & BEV SEYFERT
e-mail: kansasewbiz@prodigy.net



NEW & USED SEWING MACHINES • REPAIR SERVICE • FABRICS
KNITTING MACHINES • VACUUM CLEANERS • NOTIONS • HOME-OWNED

25 Years of Serving Wichita

Singer Approved Dealer Brothers Approved Dealer Pfaff Approved Dealer

A-1 Singer Sewing Center Dan Beltz

"We sell the best and service the rest!"

316-685-0226

Park Lane Shopping Center
1012 S. Oliver
Wichita, KS 67218
1 (800) 725-0226
www.A-1Singer.com

Midwest Sewing & Vacuum



Bernina
Baby Lock
Janome
Simplicity
Eureka Sanitaire
Hoover
Panasonic

We service what we sell.

Two Locations

111 Pattie

Wichita, Kansas 67211
(316) 262-3438
8:30-5:30 M-F, 9-4 Sat.
7348 W. 21st, Suite 108
Wichita, Kansas 67205
(316) 722-9737
10-5:30 M-F, 10-4 Sat.

www.midwestsew.com



NEEDLE NOOK FABRICS

PATTERN COMPANIES

Kwik Sew Burda
Sewkeyse Jalie
Hot Patterns



10% Discount for
ASG Members
(regular priced
fabrics only)

Have sewing questions????

Give us a call or email.

NDLNOOKFAB@AOL.COM

Check out our blogsite:

NDLNOOKFAB.BLOGSPOT.COM



- Stretch Fabrics for every occasion
- Sewing Classes
- Bra Fittings

2714 E Boulevard Plz
Wichita, Ks 67211-3812
316-684-5989

HOURS
Mon-Fri 10am-3:30pm
Sat 10am-4pm

Husqvarna VIKING

Books - Patterns
Notions - Fabrics - Classes
Hinterberg Hoops & Frames
Authorized Viking Sales & Service

*See Us For Your Quilting
and Sewing Needs*

405 Osage Road
Derby, KS 67037
316-788-5120

sunflowerquilts@sbcglobal.net



Mon-Thur - 9:30 - 6:00
Fri - Sat - 9:30 - 5:00
Sun - 1:00 - 5:00

www.sunflowerquilts.com

AMERICAN SEWING GUILD, INC

Wichita, KS Chapter
P O Box 49539
Wichita KS 67201-4539

NON-PROFIT ORG.
U.S. POSTAGE
PAID
WICHITA, KS
PERMIT NO. 923



BETTY BREES
4860 WYNDHAM RD
PARK CITY KS 67219-5501

www.asgwichita.wordpress.com

Jun/Jul 2010

672195501 0004



***ASG: Advancing Sewing As An Art And Life Skill
Membership has its privileges!***

- Monthly meetings
- Educational programs from local and industry professionals
- Learn time-saving techniques
- How-to demonstrations
- Specialty Neighborhood Groups
- Receive encouragement and support
- Share and network with sewing friends
- Attend chapter-sponsored events at member-only rates
- Participate in fashion shows and sewing fairs
- Contribute to community outreach through sewing
- Get discounts at local and national stores

American
Sewing
Guild