

Julia's Gems

Welcome to 2012! Have you gotten used to writing it on your checks yet?

I'd tell you what being the new president is like, but I don't know yet. It's still early January as I write this, and all I've learned so far is that a) I need a clipboard like Betty used to use, and b) writing this column is hard.

I do know that we've got an excellent group of people signed up to serve as the 2012 Chapter Advisory Board:

- **Vicky Islietson** will continue to produce our newsletter and step in for me as first vice-president
- **Penny Ruddell** will keep raising money by feeding our fabric stashes with the Fabric FUND
- **Sylvia Steinshouer** will follow the money as treasurer
- **Betty Brees** will record our plans and decisions as secretary
- **Marilyn John** will continue to know everyone's phone numbers and email addresses as membership coordinator
- **Theresa Corle** will keep connecting our talents with those who need them as community service chair

- **Valarie Fisher** will keep us sewing every week of the month as neighborhood groups coordinator
- **Carol Provencher and Michele Brakewood** will make gallons of coffee and order us birthday cake as hospitality co-chairs
- **Julia Waterbury** will keep us educated and entertained each month as Education chair
- **Nancy Boewe and Joan Fitzjarrald** will help us hone our skills with a nationally-known teacher as special events coordinators
- **Ginny Perott** will keep us reading and watching educational videos as librarian
- **Dawna O'Connor** will make sure everyone in Wichita knows about us as publicity chair

I want to thank each of these women for agreeing to help make this coming year a great one for our chapter. I also want to remind the rest of you that the CAB can't do this alone – we really need your ideas, your passion and your help!

Continued on Page 3...

ASG on the Web

- Wichita ASG Facebook page: www.facebook.com/asgwichita
- Wichita ASG email: asgwichita@yahoo.com
- National ASG site: www.asg.org
- National ASG Facebook page: American Sewing Guild



Advisory Board

President

Julia Langel 733-4780
julialangel@cox.net

Vice President/Newsletter

Vicky Islietson 529-1565
intimedesign@yahoo.com

Vice President/ Fabric FUND

Penny Ruddle 263-4816
penr1208@cox.net

Secretary

Betty Brees 838-3709
04120501@cox.net

Treasurer

Sylvia Steinshouer 685-6188
Sylvia@steinshouer.com

Membership

Marilyn John 684-0355
MKJohn@cox.net

Community Service

Theresa Corle 689-6702
corle1@cox.net

Special Events

Nancy Boewe 681-0000
njboewe@hotmail.com
 Joan Fitzjarrald 283-0469
jfitzjarrald@sbcglobal.net

Librarian/Historian

Ginny Perott 316-377-9407
ginnyperott@cox.net
 Beryl Silkey 682-0017
bchrysalis@sbcglobal.net

Publicity/Retail Liaison

Dawna O'Connor 832-9464
doconner2@cox.net

Education

Julia Waterbury 722-0734
jwkl31@sbcglobal.net

Hospitality

Carol Provencher 681-3880
carolprovencher@sbcglobal.net
 Michele Brakewood 630-0858
Sewfun350@aol.com

Neighborhood Group Coordinator

Valarie Fisher 684-6050
valarie_f@hotmail.com

Membership Renewal

The National office will send you a renewal notice about 2 months before your membership expires. If you don't receive a renewal notice, contact the membership chairwoman, or go to the National website, asg.org, where you can renew online.

Address Change

If your address, phone number or email changes, please report the changes to both the local membership chair and to the National office (you can use the website at asg.org.)

A Note About Photos

As you have probably noticed, we love photos! If you take photos at an ASG event, please consider posting them to Facebook or emailing them to the newsletter editor.



If you would rather not have your photo appear on Facebook or in the newsletter, please tell the newsletter editor. If you don't see yourself here, then pose and smile whenever you see a camera, especially if you are sewing or shopping.

Advertising Rates

This newsletter is published 6 times per year. We only accept sewing-related ads.

Our rates are:

- 1/8 page—\$60/yr;
- 1/4 page—\$120/yr;
- 1/2 page—\$210/yr;
- 1 page—\$300/yr.

ASG members may place classified ads for 10 cents per word.



...Continued from Page 1

And speaking of great things, it's time to sign up for the workshop with Lyla Messinger in April. I've taken a short class with her, and she's a very good teacher with clever ideas; she also does a staggering amount of preparation to ensure that her classes go well. I think we're in for a fabulous two days of technique and design ideas. There's a registration form later in this newsletter; go fill it out now, before you forget!

On a more personal level, I'm trying to remember that I joined ASG *because I like to*

sew. My goal for 2012 is to sew at least one garment every month and to finish a large scrap quilt that I've been working on forever. I find that trying to have something new for every general meeting is a great way to keep myself on track. What about you – do you make sewing goals? Or am I the only one who occasionally gets so wrapped up in reading and talking about sewing that I forget to actually do any? Please say I'm not alone!

I'm off to sew!

-Julia

Thank You! Thank You! Thank You!

Your gift of handmade napkins (78 to be exact) was greatly appreciated and came as a complete surprise. I would thank you individually but some names were not included and I don't want to leave any one out. Les and I will think of you every day as we use them.

Hugs,
Betty



Husqvarna VIKING

Books - Patterns
Notions - Fabrics - Classes
Hinterberg Hoops & Frames
Authorized Viking Sales & Service

*See Us For Your Quilting
and Sewing Needs*

405 Osage Road
Derby, KS 67037
316-788-5120

sunflowerquilts@sbcglobal.net

**Sunflower
Quilts**

Mon - Thur - 9:30 - 6:00

Fri - Sat - 9:30 - 5:00

Sun - 1:00 - 5:00

www.sunflowerquilts.com



February Events

General Meeting – February 7

“Keeping It Square”

- Techniques in the creation of a quilt
- Peggy Engel, Hen Feathers Quilt Shop
- 1:30 pm and 7 pm, Extension Center
- Julia Langel 733-4780

Community Service Sew-in – Feb 10

- Blankets for Vets, babies and hospice
- Needle Nook Fabrics, 10 am -1 pm
- Theresa Corle, 689-6702

Eat and Shop – February 17

- The Yard, 715 E 10th St. N (at Central)
- Water Street Fabrics, 255 N Water St. #B
- Café Moderne, 300 N Mead, Ste. 108 (Old Town), 11:30 am.
- Vicky Islielson, 529-1565

Sew Inspired Neighborhood Group – February 20

“Fabric Tubes Challenge”

- Embellish something with fabric tubes
- 23 Chisholm Creek, Wichita, KS, 1 pm.
- Shirley Binder, 687-7257

East Side Neighborhood Group – February 21

“T-shirt Scarf”

- By Wilma Wine
- Needle Nook Fabrics, 7 pm
- Theresa Corle 689-6702

Derby Neighborhood Group – Feb 23

“2-zipper Purse”

- By Theresa Corle, 7 pm
- Woodlawn United Methodist Church, 431 South Woodlawn Boulevard, Derby, KS
- Marilyn Beaver, 788-5615

Serger Neighborhood Group – Feb 27

- Finish the Triangle Table Runner
- By Anne Jesseph
- Machine Cleaning
- 1208 N Emporia, Wichita, KS, 1 pm
- Julia Waterbury, 722-0734

CAB Meeting – February 28

- 1:30, Ingle Room, Extension Center
- Julia Langel 733-4780



March Events

General Meeting – March 6 “Cover Your Shoulders with Ease”

- Shrugs, Caplets & Ponchos
- Anne St. Clair, Needle Nook Fabrics
- 1:30 pm and 7 pm, Sedgwick County Extension Center
- Julia Langel, 733-4780

Community Service Sew-in – Mar 9

- Blankets for Vets, babies and hospice
- Needle Nook Fabrics, 10 am -1 pm
- Theresa Corle, 689-6702

Sew Inspired Neighborhood Group – March 19

“Beading”

- By Kathy Atchinson of Advantage Beads, 1 pm.
- 23 Chisholm Creek, Wichita, KS,
- Shirley Binder, 687-7257

Eat and Shop– March 20

- Demelia's, Cottonwood Quilts, Bill's Sewing Machine, etc.
- Lunch at Carriage Crossing, Yoder Road
- Carpool from Extension Center at 9:30 am
- Shirley Binder, 687-7257

East Side Neighborhood Group – Mar 20

“Lace Flowers”

- Beryl Silkey
- Needle Nook Fabrics, 7 pm
- Theresa Corle 689-6702

Derby Neighborhood Group – Mar 22

“Got Wool, 3 Bags Full”

- Jan Adams, 7 pm
- Woodlawn United Methodist Church, 431 South Woodlawn Boulevard, Derby, KS
- Marilyn Beaver, 788-5615

Serger Group – March 26

“Cape”

- Supply list will be emailed to members
- 1208 N Emporia, Wichita, KS, 1 pm
- Julia Waterbury, 722-0734

CAB Meeting - March 27

- 1:30, Ingle Room, Extension Center
- Julia Langel, 733-4780

THE SEWING CENTER

2101 W. 21st ST.
WICHITA, KS. 67203-2110
(316) 832-0819

CHARLEY & BEV SEYFERT

e-mail: staff@kansasewbiz.kscoxmail.com

web: www.thesewingcenterwichita.com

JUKI **SINGER** **elna** GENERATIONS
APPROVED DEALER

NEW & USED SEWING MACHINES • REPAIR SERVICE
FABRICS • NOTIONS • HOME-OWNED

"A Unique Quilting Experience"

Jo Degner
&
Jan Munroe



(316) 684-5855

535 W. Douglas, suite 140
Wichita, KS 67213

Quilt@MaterialGirsQuiltShoppe.com

www.MaterialGirlsQuiltShoppe.com



In the Library

Items in our library include books, videos, DVDs, magazines and patterns. These items may be checked out for one month at a time. DVDs and videos must be returned the following month and may not be renewed until the end of the meeting so that others have a chance to check them out.

There is a charge of \$1 ***per item per month*** for items returned late. Any item not returned within 6 months will be considered lost and the member will be responsible for replacing it. A complete listing of library holdings is available at the library table during our monthly meetings.

New Titles:

1. Shirtmaking: Developing Skills for Fine Sewing, by David Page Coffin, The Taunton Press, Inc., 1998
2. DVD: Shirtmaking Techniques with David Page Coffin, The Taunton Press, 1993
3. Sewing A to Z: Your Source for Sewing and Quilting Tips and Techniques, by Nancy Zieman, Krause Publications, 2011
4. Uniquely Felt, by Christine White, Storey Publishing, LLC, 2007

Ginny, our Librarian, is always happy to hear suggestions for new books and DVD's. Do you have a favorite that you think others would enjoy? Have you seen a book that contains a technique you would like to read about? Is there a "How-to" DVD for sale in a magazine? Let her know.

FABRICS CLASSES NOTIONS STENCILS BOOKS PATTERNS

316.558.8899
7130 West Maple
Wichita, Kansas 67209

HOURS
M - Th 10 - 5:30
F - Sat 10 - 5:00



Merchant Discounts

A-1 Singer Sewing Center (15%)

685-0226, A-1singer.com
1012 S Oliver
Wichita KS

Fabric Essentials (10%)

785-243-4044, FabricEssentials.com
116 W 6th St,
Concordia KS

Hancock Fabrics (10% on some things)

7395 W Central 722-7554
8131 E Kellogg 682-4574
Wichita KS

Helen Enox Fine Fabrics (10%)

405-685-1279
1332 S W 59th
Oklahoma City OK

Hen Feathers (Punch Card)

652-9599, Henfeathersquilts.com
110 N Rock Rd
Wichita KS

Midwest Sewing Center (15%)

111 S Pattie 262-3438
7348 W 21st 722-9737
Wichita KS
Midwestsew.com

Needle Nook Fabrics (10%)

684-5989, ndlnookfab.blogspot.com
2714 Boulevard Plaza
Wichita KS

Odd Balls Yarn Shop (10% on regular priced items)

807-5293, oddballsyarnshop.com
2120 N Woodlawn, Suite 324
Wichita, KS

Sew Much (10% on regular priced items)

558-5739
1028 S Oliver
Wichita, KS

Sunflower Quilts (10%)

788-5120, Sunflowerquilts.com
405 N Osage Rd
Derby KS

The Sewing Center (10% excl. machines)

832-0819
2101 W 21st St
Wichita KS

American Sewing Guild CHAPTER MEMBERSHIP FORM

Name _____
Address _____
City _____ State _____ Zip _____
Phone (____) _____ Date _____
E-mail _____

Return to:



The American Sewing Guild
9660 Hillcroft, Suite 510, Houston, TX 77096
PH: (713) 729-3000 • FAX (713) 721-9230
Email: info@asg.org • Website: www.asg.org

(Please allow 4-6 weeks for processing)

☐ New Chapter Member - \$50.00

Chapter nearest you (City/State): _____ Wichita, KS

☐ Renewal - \$45.00 (If received **before** expiration date)

☐ Late Renewal - \$50.00 (If received **after** expiration date)

How did you hear about ASG?

☐ Online ☐ ASG Member ☐ Store ☐ Sewing Expo
☐ Magazine _____ ☐ Other _____

☐ Check enclosed payable to:
"American Sewing Guild"

☐ Please bill my MasterCard / VISA (Circle one)

Account Number _____ Expiration Date _____

Signature _____

December Scarf Challenge Winners

For our December Scarf Challenge, every member who made a scarf and brought it to either the afternoon or evening meeting was entered in a draw for one of five prizes. The draw was made at the evening meeting after all the scarves had been shown. Winners were as follows:

- Sew Delicious (cookbook) by ASG, 2011 – Vicky Is liefson and Julia Waterbury (shared)
- Pashmina Scarf – Nancy Boewe
- Pashmina Scarf – Shirley Binder
- Mystery Prize (green tube scarf) – Evelyn Cole
- Best of Bread (cookbook) – Penny Ruddle



Store Hours: MTWF
10-5:30
TH 10-7

110 N. Rock Road
Wichita, KS 67206
(Douglas & Rock)
316-652-9599
www.henfeathersquilts.com

*Supplies *Classes *Clubs

Where the cool chicks shop!

Reference:

The following books were used as reference material for the presentations at the January General Meeting:

For Shirt Cuffs and Collar: See items #1 and 2 in “New in the Library” on page 6
Threads No. 150, September 2010, pp. 43 – 47

For Double Hemmed Mitered Napkins: Fine Machine Sewing: Easy Ways to Get the Look of Hand Finishing and Embellishing, Carol Laflin Ahles, Taunton Press, 2001
www.threadsmagazine.com/item/13986/how-to-hemstitch-by-machine
www.asg.org/files/notions/ASG_Notions_Miters.pdf



Singer Approved Dealer	Brother Approved Dealer	Pfaff Approved Dealer
------------------------------	-------------------------------	-----------------------------

A-1 Singer Sewing Center

Dan Beltz

"We sell the best and service the rest!"

316-685-0226

Park Lane Shopping Center
1012 S. Oliver
Wichita, KS 67218
1 (800) 725-0226
www.A-1Singer.com

Midwest Sewing & Vacuum



Bernina
Baby Lock
Janome
Simplicity
Eureka Sanitaire
Hoover
Panasonic

We service what we sell.

Two Locations

111 Pattie
Wichita, Kansas 67211
(316) 262-3438
8:30-5:30 M-F, 9-4 Sat.
7348 W. 21st, Suite 108
Wichita, Kansas 67205
(316) 722-9737
10-5:30 M-F, 10-4 Sat.
www.midwestsewing.net



Recipe

The following recipe was served at the December Christmas party and was requested by several members. CAUTION: Only serve to large groups!

UGLY DIP

- 1 C mayonnaise
- 1 C sour cream
- 1 can Rotel Original diced tomatoes with green chilies, drained
- 1 can Mexicorn (by Green Giant), drained
- 3 or 4 green onions, chopped
- 2 C finely grated cheddar cheese

Mix and refrigerate for 24 hours. Serve with Frito Scoops

NOTE: If you do not have Mexicorn, use 1 can of regular corn, drained and ½ of a small jar of pimientos.

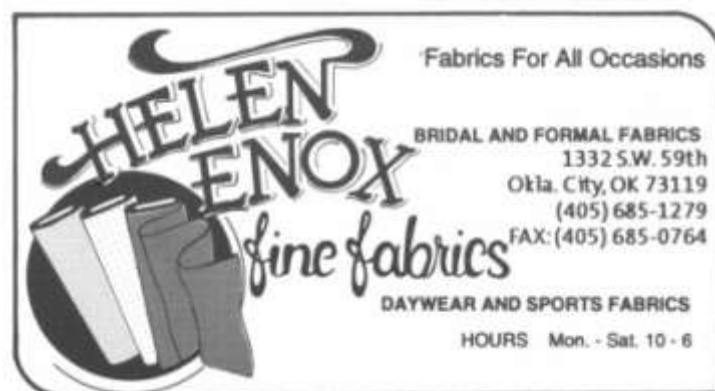
-Contributed by Dorothy Johaneck, attributed to Jo Johaneck



Community Service

Sew-in days to make lap blankets for hospice patients, lap blankets for veterans (VA hospitals or other veterans service programs) and receiving blankets for babies (indigent families) are scheduled for February 10, March 9 and May 11, 10 am to 1 pm, at Needle Nook Fabrics. If you have some fabric suitable for making blankets, please bring it along. You can use one of the machines at the store, or bring your own. All blankets made by Wichita ASG will be donated locally.

Dates and times for Gown Town will be announced at the February General meeting. We are invited to assist with alterations to donated prom gowns for girls who cannot afford to buy one. All levels of skill are welcome.



On-Going Fundraisers

The Fabric Fund has fabric for sale! Prices are \$1 per yard. Funds raised go into the general budget. At the library table, we have magazines that have been donated by members for sale for 25 cents each or 5 for a dollar. Funds raised go to buy items for the library.

Tables open before and after the meeting and during refreshment break.

NEEDLE NOOK FABRICS

PATTERN COMPANIES

Kwik Sew	Burda
Sewkeyse	Jalie
Hot Patterns	

Have sewing questions????

Give us a call or email.

NDLNOOKFAB@AOL.COM

Check out our blogsite:

NDLNOOKFAB.BLOGSPOT.COM



10% Discount for ASG

Members

(regular priced fabrics
only)



- Stretch Fabrics for every occasion
- Sewing Classes
- Bra Fittings

2714 E Boulevard Plaza
Wichita, Ks 67211-3812
316-684-5989

HOURS

Mon – Fri 10 am – 5:30 pm
Saturday 10 am – 4 pm

**LYLA MESSINGER SEMINAR
SEDGWICK COUNTY EXTENSION CENTER
APRIL 12, 13, & 14, 2012**

The Wichita Chapter of the American Sewing Guild is pleased to announce that Lyla Messinger will be here for a trunk show Thursday Evening April 12, followed by a two-day seminar April 13 & 14, 2012. Lyla J. Messinger is an internationally recognized designer, speaker, author and teacher. She owns L.J. Designs, a multi-faceted company including L.J. Designs, À La Mode, and Eclectic Treasures pattern lines, Design Plus® notions, and TheSewingPlace.com website for fashion sewing enthusiasts. Lyla retired from teaching to promote fashion sewing by providing simple, stylish garment patterns, notions, education and inspiration.

Known throughout the sewing industry as an innovator, she was a founding member of the Independent Pattern Company Alliance (IPCA) and was honored as 2009 Excellent Teacher of the Year at American Sewing Expo. She has designed an entire line of zippers for the Riri zipper company of Switzerland.

She is the author of the book Ordinary to Extraordinary: Terrific Treatments for Garment Sewing and contributed to Notions, published by Taunton. She has also been featured in Threads, Sew News, Sew Beautiful and Australian Stitches magazines, as well as on DIY Network's "Sew Much More" show. She is known for her innovative styles and unique lines that offer simplicity and comfort to all ages, shapes and sizes.

Bringing Passion Back to Fashion - Take a look into a highly wearable, easily sewn and distinctive closet FULL of clothes as you discover the latest highlights from Lyla's three pattern lines: L.J. Designs, À La Mode, and Eclectic Treasures. See how easy it is to change a garment's look with a simple change in the pattern. It might be as simple as a small addition or subtraction, a boutique touch, or a fabric or hemline change. With simple to fit and sew patterns from size XXS- 4XL, you'll be inspired to create and sew for yourself! ***Free Trunk Show, Thursday Evening***, April 12, 7:00 p.m.

The Best of Lyla's Techniques - 2 Day Seminar and Workshop.

Friday, Lecture Demo: see how Lyla uses her techniques to create extraordinary garments.

Saturday, Hands on workshop: Seventeen in Seven. Spend 7 hours learning 17 of Lyla's techniques to create your own distinctive wardrobe. Included will be ♦ Slash and Twist ♦ Ruched Trim ♦ Custom Corder Trim ♦ Facing Free Necklines ♦ Sculpted Buttonholes ♦ Controlled Knit Hems ♦ Double needle tips ♦ and 10 more. Fee \$100.00 includes both days. *Lunch included.*

For more information, contact the registration coordinator, at 316-687-7257 or scraplvr@att.net

No refunds within 30 days of the event. Substitutions are allowed. *A supply list will be sent to participants.*

Lyla Messenger Seminar Registration

NAME _____ Phone _____

Address _____ City _____ ST _____ Zip _____

E-Mail Address _____

_____ I plan to attend the Thursday Evening April 12 Trunk Show

_____ Friday and Saturday April 13 & 14, 2012 9 a.m. to 4 p.m. \$100.00

_____ My Check for \$100.00 made payable to **American Sewing Guild-Wichita Chapter** is enclosed

Mail Registration to: American Sewing Guild Wichita Kansas Chapter, P. O. Box 49539 Wichita, KS 67201-4539

AMERICAN SEWING GUILD, INC

WICHITA KS CHAPTER
PO Box 49539
Wichita, KS 67201-4539

NON-PROFIT ORG
U.S POSTAGE
PAID
WICHITA, KS
PERMIT NO. 923

www.asgwichita.wordpress.com
February/March 2012

ASG: Advancing Sewing As An Art And Life Skill Membership has its privileges!

- Monthly meetings
- Educational programs from local and industry professionals
- Learn time-saving techniques
- How-to demonstrations
- Specialty Neighborhood Groups
- Receive encouragement and support
- Share and network with sewing friends
- Attend chapter-sponsored events at member-only rates
- Participate in fashion shows and sewing fairs
- Contribute to community outreach through sewing
- Get discounts at local and national stores

