

Julia's Gems

As I write this, I'm sitting in a hotel in Columbus, Ohio, finishing up two weeks of genealogy conference and research. And yet, even while I'm immersed in this other passion, I'm still surrounded by fashion and textiles. For example, there was the guy who felt that a conference of 2500 genealogists was a good place to bust out his kilt; I was sort of honored that he felt safe expressing his fashion sense among us. Then there was the must-have souvenir of the conference – a tee shirt that could only be earned by doing an hour of volunteer work in the exhibit hall; for four solid days, every time I walked by there were people standing in line. It's not that great a tee shirt, but you can bet I've got mine! And finally, a group trying to raise money for that most modern of projects--the

digitization of records--decided to use a decidedly old-fashioned approach, the GeneaQuilters raffle quilt!



So how does fashion intersect with your other passions? Do you make costumes for theater or dance? Quilts to raise money for a favorite charity? Do you get fashion souvenirs from great trips? Or, perhaps you're hiding your own kilt in a closet?

Summer is coming, but we're not slowing down! We've got neighborhood group meetings, a visit to the historical museum, and a 4H fashion show coming up. So pull out those fashion souvenirs and come join us!

-Julia

Rumour Has It...

- Not content with her new job as secretary, Betty Brees has submitted her application to be elected to the ASG Board of Directors at Conference this year.
- Nancy Boewe is working on arranging tours to Music Theatre costume shop and a uniform shop.
- Bring in a new member and you could win a Crafts.com class.

ASG on the Web

- Wichita ASG Facebook page: www.facebook.com/asgwichita
- Wichita ASG email: asgwichita@yahoo.com
- National ASG site: www.asg.org
- National ASG Facebook page: American Sewing Guild



Advisory Board

President

Julia Langel 733-4780
julialangel@cox.net

Vice President/Newsletter

Vicky Islielson 529-1565
intimedesign@yahoo.com

Vice President/ Fabric FUND

Penny Ruddle 263-4816
penr1208@cox.net

Secretary

Betty Brees 838-3709
04120501@cox.net

Treasurer

Sylvia Steinshouer 685-6188
Sylvia@steinshouer.com

Membership

Marilyn John 684-0355
MKJohn@cox.net

Community Service

Theresa Corle 689-6702
corle1@cox.net

Special Events

Nancy Boewe 681-0000
njboewe@hotmail.com

Librarian/Historian

Ginny Perott 316-377-9407
ginnyperott@cox.net
 Beryl Silkey 682-0017
bchrysalis@sbcglobal.net

Publicity/Retail Liaison

Dawna O'Connor 832-9464
doconner2@cox.net

Education

Julia Waterbury 722-0734
jwkl31@sbcglobal.net

Hospitality

Carol Provencher 681-3880
carolprovencher@sbcgloabal.net
 Michele Brakewood 630-0858
Sewfun350@aol.com

Neighborhood Group Coordinator

Valarie Fisher 684-6050
valarie_f@hotmail.com

Membership Renewal

The National office will send you a renewal notice about 2 months before your membership expires. If you don't receive a renewal notice, contact the membership chairwoman, or go to the National website, asg.org, where you can renew online.

Address Change

If your address, phone number or email changes, please report the changes to both the local membership chair and to the National office (you can use the website at asg.org.)

A Note About Photos

As you have probably noticed, we love photos! If you take photos at an ASG event, please consider posting them to Facebook or emailing them to the newsletter editor.



If you would rather not have your photo appear on Facebook or in the newsletter, please tell the newsletter editor. If you don't see yourself here, then pose and smile whenever you see a camera, especially if you are sewing or shopping.

Advertising Rates

This newsletter is published 6 times per year. We only accept sewing-related ads.

Our rates are:

- 1/8 page—\$60/yr;
- 1/4 page—\$120/yr;
- 1/2 page—\$210/yr;
- 1 page—\$300/yr.



ASG members may place classified ads for 10 cents per word.



Hands-On Project at the June General Meeting: Preparation

Use a man's necktie to create a scarf that can be worn with t-shirts, shirts, blouses.

This is one of Lyla Messenger's Hourglass Accessories.

Bring a necktie to the June meeting and we will turn it into a scarf. You will also need some heavy duty pins (quilting).

You need to do a bit of preparation to the tie.

1. Remove all of the stitching from the back of the tie. Remove the interfacing. Leave the creases in the tie. Do not remove lining
2. Open the tie at one of the bias seams in the back neck area.
3. Press this part of the tie (ONLY) flat. Cut off about 1 ¼". (*Skip steps 2 and 3 if you can use the label or have a matching piece of ribbon for the loop.*)
4. Re-stitch the seam at the back neck of tie. Press seam open and press back into tie shape.
5. Pin tie back together
6. Stitch the back seam together by hand, without catching the front of the tie in the stitching.

"A Unique Quilting Experience"



Material
Girls
Quilt
Shoppe

**Jo Degner
&
Jan Munroe**

(316) 684-5855

535 W. Douglas, suite 140
Wichita, KS 67213

Quilt@MaterialGirlsQuiltShoppe.com

www.MaterialGirlsQuiltShoppe.com

Lyla Messenger Seminar: Two days of New Techniques

One eventful weekend in April, thirty members were treated to an evening trunk show, one full day of tips, techniques and examples, and a second full day of hands-on sewing techniques. On Thursday evening, Lyla gave us a 2 ½ hour trunk show of her designs as a preview of her innovative construction methods. Friday was a full day of looking in-depth at her unique designs and how she uses some custom made tools and notions to work with fine fabrics, including sheers, slinky, silk, rayon knits, textured wools and fleece. Many went home with patterns, new tools and plenty of special threads and fusible tapes. On Saturday, we put in a day of sewing, as each of us produced a workbook of samples illustrating her "17 in 7" techniques that we can use to make our own professional looking garments and accessories.



Thanks to everyone who helped organize, prepare sample packets, set up, clean up, handle the sales table and prepare snacks. Special thanks go to Jan Adams for delicious lunches and Barb Blackman for providing accommodations.

Lyla got one Kansas experience she would have gladly done without, as would the rest of us, waiting out a tornado on Saturday evening, but we all lived to sew another day.



June Events

General Meeting – June 5

“Hourglass Necktie Scarf”

- Hands on project; Lyla Messinger technique
- Lyla Messinger Challenge
- See supply list on p. 3
- 1:30 pm and 7 pm, Extension Center
- Julia Langel 733-4780

Eat and Tour – June 14

- Heritage Hut, 2820 E Douglas
- Midwest Sewing, 111 S. Pattie
- Mrs. O’Leary’s, 125 N. Rock Island
- Eat at Margarita’s, 3109 E Douglas, 11:30 am
- Julia Langel 733-4780

Sew Inspired Neighborhood Group – June 18

“Smocking”

- Work on Wee-Care Gowns, Continued
- 3632 E English, 1 pm.
- Shirley Binder, 687-7257

East Side Neighborhood Group – June 19

“Make a Top in an Evening”

- Bring 1 yard of fabric
- By Theresa Corle
- Needle Nook Fabrics, 7 pm
- Theresa Corle 689-6702

Serger Neighborhood Group – June 25

- Dollar store Tea towel apron
- By Penny Ruddle
- 1208 N Emporia, Wichita, KS, 1 pm
- Julia Waterbury, 722-0734

CAB Meeting – June 26

- 1:30, Ingle Room, Extension Center
- Julia Langel 733-4780

Derby Neighborhood Group – June 28

“Community Blanket Sew-in: Day time”

- 11 am – 4 pm, bring supplies & a snack
- Woodlawn United Methodist Church, 431 South Woodlawn Boulevard, Derby, KS
- Marilyn Beaver, 788-5615

Bears for Badges – June 29

- 9 am – midnight; come and go
- 4-H hall B, Extension Center (See p. 11)

THE SEWING CENTER

2101 W. 21st ST.
WICHITA, KS. 67203-2110
(316) 832-0819

CHARLEY & BEV SEYFERT

e-mail: staff@kansassewbiz.kscxml.com

web: www.thesewingcenterwichita.com

JUKI **SINGER** **elna** GENERATIONS
APPROVED DEALER

NEW & USED SEWING MACHINES • REPAIR SERVICE
FABRICS • NOTIONS • HOME-OWNED



Store Hours: MTWF
10-5:30
TH 10-7

110 N. Rock Road
Wichita, KS 67206
(Douglas & Rock)
316-652-9599

www.henfeathersquilts.com

*Supplies *Classes *Clubs

Where the cool chicks shop!



July Events

NO General Meeting – July 3

- Julia Langel, 733-4780

Eat and View – July 3 ***“4-H Style Review”***

- Eat at the Copper Oven, 2409 West 13th Street North (Indian Hills), 5:30 pm
- View the 4-H style review, 7 pm
- Sedgwick County Extension Center
- Julia Langel, 733-4780

Strategy Meeting – July 12

- Brainstorm new ways to retain/increase membership, plan future events
- 13311 E. Castlewood, 1 pm
- Julia Langel, 733-4780

Sew Inspired Neighborhood Group – July 16

“Pleats, Flounces, Ruffles”

- 1 pm. 23 Chisholm Creek, Wichita, KS,
- Shirley Binder, 687-7257

East Side Neighborhood Group – July 17

“Cover Your Shoulders with Ease”

- Anne St. Clair
- Needle Nook Fabrics, 7 pm
- Theresa Corle 689-6702

Serger Group – July 23

“Serger Techniques”

- First four techniques from the Bernina Workbook
- 1208 N Emporia, Wichita, KS, 1 pm
- Julia Waterbury, 722-0734

CAB Meeting – July 24

- 1:30, Ingle Room, Extension Center
- Julia Langel, 733-4780

Derby Neighborhood Group – July 26

“Fitting Yourself by Yourself”

- Peggy Sagers Video:, 7 pm
- Woodlawn United Methodist Church, 431 South Woodlawn Boulevard, Derby, KS
- Marilyn Beaver, 788-5615



Penny Ruddle, East Side NG



Esther Cummins, May Show and Share



In the Library

Items in our library include books, videos, DVDs, magazines and patterns. These items may be checked out for one month at a time. DVDs and videos must be returned the following month and may not be renewed until the end of the meeting so that others have a chance to check them out. There is a charge of \$1 ***per item per month*** for items returned late. Any item not returned within 6 months will be considered lost and the member will be responsible for replacing it. A complete listing of library holdings is available at the library table during our monthly meetings.

New Titles:

- The (almost) complete collection of Singer Sewing Reference Library books in mint condition
- Lyla Messinger DVD

Ginny, our Librarian, is always happy to hear suggestions for new books and DVD's. Do you have a favorite that you think others would enjoy? Have you seen a book that contains a technique you would like to read about? Is there a "How-to" DVD for sale in a magazine? We are also happy to receive your donations of sewing related magazines that we then sell to other members. However, we request that you limit your donations to no more than two years worth at one time, so that our librarian can handle the volume.

Husqvarna VIKING

Books - Patterns

Notions - Fabrics - Classes

Hinterberg Hoops & Frames

Authorized Viking Sales & Service

*See Us For Your Quilting
and Sewing Needs*

405 Osage Road

Derby, KS 67037

316-788-5120

sunflowerquilts@sbcglobal.net

**Sunflower
Quilts**

Mon - Thur - 9:30 - 6:00

Fri - Sat - 9:30 - 5:00

Sun - 1:00 - 5:00

www.sunflowerquilts.com

On-Going Fundraisers

The Fabric Fund has fabric for sale! Prices are \$1 per yard. **SALE: RED, WHITE OR BLUE FABRICS 50% OFF!** Funds raised go into the general budget.

At the library table, we have magazines that have been donated by members for sale for 25 cents each or 5 for a dollar. Funds raised go to buy items for the library

The Fabric Fund needs donations, but please do NOT donate fabric that has been stored with moth balls. The smell is impossible to remove and transfers to other items.

Tables open before and after the meeting and during refreshment break.



*Merchant Discounts***A-1 Singer Sewing Center (15%)**

685-0226, A-1singer.com
1012 S Oliver
Wichita KS

Fabric Essentials (10%)

785-243-4044, FabricEssentials.com
116 W 6th St,
Concordia KS

Hancock Fabrics (10% on some things)

7395 W Central 722-7554
8131 E Kellogg 682-4574
Wichita KS

Helen Enox Fine Fabrics (10%)

405-685-1279
1332 S W 59th
Oklahoma City OK

Hen Feathers (Punch Card)

652-9599, Henfeathersquilts.com
110 N Rock Rd
Wichita KS

Midwest Sewing Center (15%)

111 S Pattie 262-3438
7348 W 21st 722-9737
Wichita KS
Midwestsew.com

Needle Nook Fabrics (10% off regular priced fabrics)

684-5989, ndlnookfab.blogspot.com
2714 Boulevard Plaza
Wichita KS

Odd Balls Yarn Shop (10% on regular priced items)

316-804-4890, oddballsyarnshop.com
Chisholm Trails Shopping Center,
Suite 102
Newton, KS

Sunflower Quilts (10%)

788-5120, Sunflowerquilts.com
405 N Osage Rd
Derby KS

The Sewing Center (10% excl. machines)

832-0819
2101 W 21st St
Wichita KS

American Sewing Guild CHAPTER MEMBERSHIP FORM

Name _____

Address _____

City _____ State _____ Zip _____

Phone (____) _____ Date _____

E-mail _____

Return to:



The American Sewing Guild
9660 Hillcroft, Suite 510, Houston, TX 77096
PH: (713) 729-3000 • FAX (713) 721-9230
Email: info@asg.org • Website: www.asg.org

(Please allow 4-6 weeks for processing)

☐ **New Chapter Member - \$50.00**Chapter nearest you (City/State): Wichita, KS☐ **Renewal - \$45.00** (If received **before** expiration date)☐ **Late Renewal - \$50.00** (If received **after** expiration date)**How did you hear about ASG?**☐ Online ☐ ASG Member ☐ Store ☐ Sewing Expo☐ Magazine _____ ☐ Other _____☐ Check enclosed payable to:
"American Sewing Guild"☐ Please bill my **MasterCard / VISA** (Circle one)

Account Number _____

Expiration Date _____

Signature _____



Two Recipes: One to Eat and One to Wear

Caramel Corn Topping

2 bags Corn Puffs (white, Chester's Brand)
2 sticks (1 cup) butter
2 cups brown sugar
1 cup corn syrup
2 tsp baking soda

Place the corn puffs in a large oven-proof bowl. Cook butter, sugar and corn syrup until it comes to a boil. Cook 4 more minutes to hard crack stage (300 - 310 °F). Add the baking soda and stir. Pour over the corn puffs and stir lightly. Bake in 250°F oven for 45 minutes, stirring every 15 minutes. Lay out on waxed paper or foil and separate. Allow to cool and store in an air tight container.

-Pat Postlethwait

FABRICS CLASSES NOTIONS STENCILS BOOKS PATTERNS

316.558.8899
7130 West Maple
Wichita, Kansas 67209

HOURS
M - Th 10 - 5:30
F - Sat 10 - 5:00

"Turquoise Jewelry"

2 potatoes
Nails, 1 ¼ in. long
Acrylic paint – "Desert Turquoise"
Clear sealer such as Mod Podge Matte
Jewelry wire

Dice potatoes approximately ½ in. square, and then snip off corners to produce irregular shapes. Insert a nail through the center of each piece. Lay out on paper towels to dry (may take 2 weeks or longer—Pat left hers for 2 months) The potatoes must be completely dry. The potato pieces will turn an ugly brown/black color. Remove the nails; you may need pliers. Paint with the acrylic paint and let dry. Coat with Mod Podge Matte and let dry. You may need to use the nails to re-open the holes if they get filled in with the paint. Lay out the nuggets the way you want them and string on jewelry wire. They look nice if you put the larger ones in the middle.

-Pat Postlethwait

Singer	Brother	Pfaff
Approved	Approved	Approved
Dealer	Dealer	Dealer

A-1 Singer Sewing Center

Dan Beltz

"We sell the best and service the rest!"

316-685-0226

Park Lane Shopping Center

1012 S. Oliver

Wichita, KS 67218

1 (800) 725-0226

www.A-1Singer.com



Community Service Report

Our last organized charity sewing event was May 11 at Needle Nook Fabrics. Eight ladies attended, with six working, one bringing in fresh fabric and one mostly supervising for her own safety.

Seven crib sheets and nine blankets of various sizes were completed with donated fabric. Lunch was at Taste and See on east Harry.

Derby Neighborhood group is having a community sewing event in June (see June Events). Serger Neighborhood group will be making more blankets at the May sew-in and Sew Inspired is making Wee-care gowns for stillborn babies in May also.

If you or your group does any charity sewing or crafting work, please report your hours to Theresa Corle. She submits all the hours to ASG national twice a year so that we can maintain our non-profit status.



May Charity Sew-in



Necktie Flowers, East Side NG

NEEDLE NOOK FABRICS

PATTERN COMPANIES

Kwik Sew	Burda
Sewkeyse	Jalie
Hot Patterns	

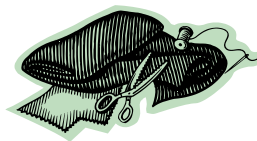
Have sewing questions????

Give us a call or email.

NDLNOOKFAB@AOL.COM

Check out our blogsite:

NDLNOOKFAB.BLOGSPOT.COM



10% Discount for ASG

Members

(regular priced fabrics
only)



- Stretch Fabrics for every occasion
- Sewing Classes
- Bra Fittings

2714 E Boulevard Plaza
Wichita, Ks 67211-3812
316-684-5989

HOURS

Mon – Fri 10 am – 5:30 pm

Saturday 10 am – 4 pm

Lacretia Fitzjarrald, May Show and Share





**Marilyn Beaver, ASG
Contest Entry**



Quilt by Sharon Smith, May Speaker



**Pat Hernandez, ASG
Contest entry**

\$10 off!

Any online purchase over \$25!
Enter 10asgks at checkout— coupon
is good til April 15, 2012— one use
only per person.

www.sewflakesfabrics.com

SewFlakes

fine quilt & fashion fabrics

106 S. Main
Broken Arrow, Ok. 74012
918. 251.7094
www.sewflakesfabrics.com



Midwest Sewing & Vacuum



Bernina
Baby Lock
Janome
Simplicity
Eureka Sanitaire
Hoover
Panasonic

We service what we sell.

Two Locations

111 Pattie
Wichita, Kansas 67211
(316) 262-3438
8:30-5:30 M-F, 9-4 Sat.
7348 W. 21st, Suite 108
Wichita, Kansas 67205
(316) 722-9737
10-5:30 M-F, 10-4 Sat.
www.midwestsewing.net



Classified Ad

BERNINA 630 WITH EMBROIDERY UNIT, TUTTO CARRIER, EXTRA ATTACHMENTS

Total value of items \$7323.91. Asking **\$3,900.00** for everything. BSR (Bernina Stitch Regulator) attachment and additional accessories valued at over \$4,000. Bought at Midwest Sewing in 2006 but rarely used. I have never had problems with the machine nor has it needed 'adjustments'. Nothing sews like a Bernina!

Original presser feet: reverse pattern, overlock, buttonhole, automatic buttonhole with slide, zipper, blind stitch, darning, and open embroidery.

Additional presser feet: BSR, walking, jeans, edge stitch, overlock for bulky, embroidery, gathering, button sew-on, darning with small opening, patchwork.

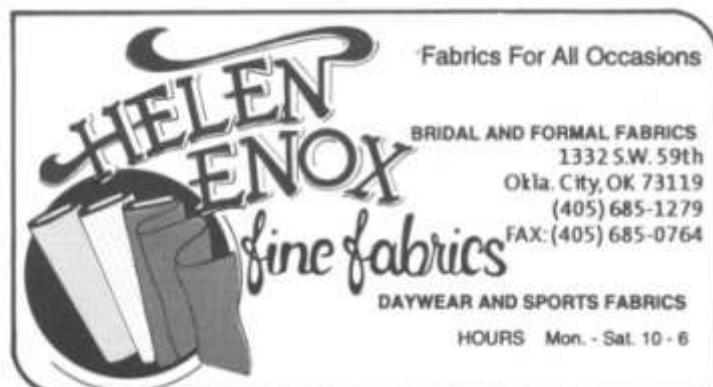
More accessories: large table to fit machine, customized bobbins, Dakota embroidery design CDs, DVDs workshop, large Tutto luggage to transport, Bernina magnifying glass set, extra hoop, embroidery thread box, multiple thread spool holder, three manuals. USB thumb drive with downloaded patterns.

To view, contact Joan Fitzjarrald at 316-650-3243 or email: jfitzjarrald@sbcglobal.net

Help the Sherriff's Department help Kids in Trauma

The Sedgwick County Sheriff's Department is in desperate need of teddy bears to give to children in trauma situations. After the recent tornado in the Oaklawn area, their supplies are almost depleted. In response to this situation, I would like to invite you and your members to lend a hand on June 29th to help make bears in support of the SG County Sheriff's Department and all that they do to keep us safe! We will have work stations set up to make "production" as easy as possible. Even members who have little or no sewing experience can help stuff the bears.

Denise G. Dias
Sedgwick County Extension Agent, Family & Consumer Sciences



Marsh Volz, May Show and Share



AMERICAN SEWING GUILD, INC

WICHITA KS CHAPTER
PO Box 49539
Wichita, KS 67201-4539

NON-PROFIT ORG
U.S POSTAGE
PAID
WICHITA, KS
PERMIT NO. 923

asgwichita@yahoo.com
June/July 2012

ASG: Advancing Sewing As An Art And Life Skill Membership has its privileges!

- Monthly meetings
- Educational programs from local and industry professionals
- Learn time-saving techniques
- How-to demonstrations
- Specialty Neighborhood Groups
- Receive encouragement and support
- Share and network with sewing friends
- Attend chapter-sponsored events at member-only rates
- Participate in fashion shows and sewing fairs
- Contribute to community outreach through sewing
- Get discounts at local and national stores

