

Julia's Gems

Another fabulous workshop has come and gone! It always surprises me how exhilarating, and exhausting, these workshops can be – we really cram a lot into 14 hours of intense sewing in one weekend! Many thanks to Nancy Boewe for organizing us, to Wilma Wine, Jan Adams and Sheryl Caryl for feeding us, and to everyone else who helped with the workshop.

I always call myself “embellishment challenged” – I think embellishments are fun but can never figure out how to work them into the garments I make for myself. But, during the workshop, I had a brainstorm, and not only knew how to add an embellishment to a garment in progress but how that embellishment would fix a construction problem! It's only the Thursday after the workshop and I have already finished my project! Woohoo!

I'd love to be able to tell you about next year's workshop, but we don't have one scheduled yet. However, we have a Special Events Team to plan it – Nancy has decided that two is enough for her. Pat Hernandez and Judy Troyer have agreed to take over. If you like our workshops, or have someone you'd really like us to bring in to teach, please let one of them know your thoughts. The CAB has been

tossing around a couple of names, but we are open to more suggestions.

If you'd like to show off your new embellishment skills, remember that ASG is sponsoring the “Anyone Can Win” contest again this year; the deadline for entries is July 1. We are also sponsoring the Creative Fashion Tee contest at the State Fair again; that deadline will be in August.

We've got a lot of interesting things coming up this summer. In June, we will learn about making hats and go on a road trip to Eat and Shop in Alden, KS. There is no general meeting in July, but a number of members will be carpooling to St. Louis to attend Conference at the end of the month. In addition, Meow is finishing embroidered projects with quilting techniques. Sew Inspired is getting textured by machine and by hand, the afternoon Serger Group is making quilts and napkins, and a new morning Serge It Up group has formed for those with electronic and cover stitch machines. Their focus will be on refining the stitches on these complex machines. Of course, everyone is welcome.

Let's get sewing!

Julia

ASG on the Web

- Wichita ASG Facebook page: www.facebook.com/asgwichita
- Wichita ASG email: asgwichita@yahoo.com
- National ASG site: www.asg.org
- National ASG Facebook page: American Sewing Guild

Chapter Advisory Board

President

Julia Langel (316) 733-4780

julialangel@cox.net

Vice President/Newsletter

Vicky Islietson (316) 529-1565

intimedesign@yahoo.com

Vice President/ Fabric FUNd

Penny Ruddle (316) 263-4816

penr1208@cox.net

Secretary

Esther Cummins (316) 295-3100

ecummins23@att.net

Treasurer

Becky Wondra (316) 722-0939

rlwondra1@cox.net

Membership

Betty Brees , (316) 838-3709

04120501@cox.net

Community Service

Theresa Corle (316) 689-6702

corle1@cox.net

Special Events

Pat Hernandez (316) 722-9250

sewpat@att.net

Judy Troyer 620-947-3537

jtroyer@outlook.com

Librarian

Ginny Perott 316-377-9407

ginnyperott@cox.net

Beryl Silkey (316) 682-0017

bchrysalis@sbcglobal.net

Publicity/Retail Liaison

This position is open

Education

Julia Waterbury (316) 722-0734

jwkl31@sbcglobal.net

Hospitality

Wilma Wine (316) 832-1202

dawine@cox.net

Neighborhood Group Coordinator

Norma Womack, (316) 721-9306

Womack2004@gmail.com

Special Projects

Shirley Binder (316) 687-7257

scraplvr@att.net

Membership Renewal

The National office will send you a renewal notice about 2 months before your membership expires. If you don't receive a renewal notice, contact the membership chairwoman, or go to the National website, asg.org, where you can renew online.

Address Change

If your address, phone number or email changes, please report the changes to both the local membership chair and to the National office (you can use the website at asg.org.)

A Note About Photos

As you have probably noticed, we love photos! If you take photos at an ASG event, please consider posting them to Facebook or emailing them to the newsletter editor.



If you would rather not have your photo appear on Facebook or in the newsletter, please tell the newsletter editor. If you don't see yourself here, then pose and smile whenever you see a camera, especially if you are sewing or shopping.

Advertising Rates

This newsletter is published 6 times per year. We only accept sewing-related ads.

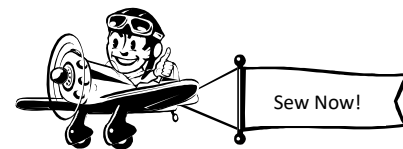
Our rates are:

- 1/8 page—\$60/yr;
- 1/4 page—\$120/yr;
- 1/2 page—\$210/yr;
- 1 page—\$300/yr.

ASG members may place classified ads for 10 cents per word.

Cares and Concerns

If you know of a guild member who is experiencing an illness or a loss in their family, please contact Evelyn Cole at 262-5713.



Rumour Has It...

- Shirley Binder has ordered more ASG Wichita Bling. She will have some extras, so you can still get one from her for \$12.
- There will be a Community Service display at Conference. We are sending a Handbag and some photos for display, along with a pattern and instructions, and information on how we have challenged our members to make them for the last two years.
- We will still assist anyone with a photo and uploading your entry to the Anyone Can Win Contest. In June, see Julia Langel for assistance.
- We will be sponsoring a T-shirt category(\$50) at the State Fair again this year. Members are encouraged to enter, along with other classes. The deadline for free entry is August 15th. ASG volunteers will transport your entries if you can't take them to Hutchinson yourself.
- Our chapter will be sponsoring three awards for the 4-H sewing participants. These awards, along with a small gift for each participant, will be given out at the Style Show on July 2 at the Extension Center.

Serge It Up: New Neighborhood Group

A meeting for a new serger group was held on Wednesday, April 23, 2014. The group was organized by ASG members who wanted to learn the cover stitch and/or how to use their electronic sergers. The name "**SERGE IT UP**" was chosen to reflect the concept that this group will look at functions of advanced machines. A monthly meeting will be held on the 4th Thursday at A-1 Singer Sewing Center from 9:30-11:30. (Note date change for July).

It was decided to focus on technique, finding the right stitch for the fabric and project on which we were working. Also the group will work on embellishing (especially with the cover stitch)

A list of topics to cover includes flatlock, cover stitch, chain stitch, 5- and 4-thread safety stitches, using wooly nylon thread, and working with many types of fabric. Some of those present tried some samples on knit fabric using a flatlock stitch. This will likely be revisited later.

Stitches to work on have been planned for May through August. All members are welcome.

THE SEWING CENTER

2101 W. 21st ST.
WICHITA, KS. 67203-2110
(316) 832-0819

CHARLEY & BEV SEYFERT
e-mail: staff@kansassewbiz.kscoxmail.com
web: www.thesewingcenterwichita.com

JUKI **SINGER**  JANOME
APPROVED DEALER

NEW & USED SEWING MACHINES • REPAIR SERVICE
FABRICS • NOTIONS • HOME-OWNED

Special Events Report

On April 11 and 12, thirty-one people brought their sewing machines and sergers to the Extension Center to learn many embellishment techniques from guest instructor Gail Yellen.

Friday featured ways to use the sewing machine, along with some special notions, to add interest to our future creations. We learned how to use "shrink thread" to create a textured fabric and then apply it to a background. Next, a fusible interfacing was used to create a circular opening to hold a reverse appliqué. Another opening was filled with a suspended metal charm. Silk ribbon was applied to a background with Steam-a-Seam and then stitched



Gail Yellen



down using built-in decorative machine stitches. We learned Gail's "unbeweavable" technique of cutting and drawing threads from a woven fabric and then weaving in silk ribbons. An intersection of the ribbons was completed with stacked buttons and a bead. Curving rows of twin needle pin tucks were sewn on jogging fleece and then a special rotary blade (cuts with spaces between) was run between the pin tucks and the cuts were woven with fluffy yarn.

On Saturday, Gail gave us "Cosmetic Serger-y". All techniques were possible on 3/4 thread sergers with differential feed. First, we learned how to gather using the differential feed and how to adjust the amount of gathering. We then set up for a rolled hem and used the differential feed to make a lettuce hem on knit. The differential feed was also used to fine tune the stitching of a rolled hem on sheer fabric, with the use of a wash-away stabilizer to

eliminate "serger stubble". The 3-thread narrow hem



Julia Waterbury



Wilma Wine and JoZana Smith

was used to apply lace to a lingerie fabric and to make wire edged ribbon from two layers of printed cotton. The 3-thread rolled hem was also used to cover narrow elastic for button loops and twill tape to make braid. The covered braid was applied to a background fabric along with variegated serger chains using a fusible and then

stitched down with monofilament thread. Finally, we used a top-stitch needle and heavier thread to make a flatlock stitch. The ladder side of the flatlock was then woven with a narrow ribbon.



Marilyn John

Gail commented that she enjoyed working with our group, and we all benefitted from learning some new techniques from her. She brought many jackets and skirts for us to examine to see how the techniques can be used. She had a few notions and patterns for sale, including a jacket with some added

embellishments. We also purchased her book and DVD for the library.

Thanks to Nancy Boewe for organizing this informative event. We are also grateful to Jan Adams and her helper, Sheryl Caryl for feeding us lunch and to Wilma Wine for the homemade cookies and other refreshments.

Singer
Approved
Dealer

Brother
Approved
Dealer

Pfaff
Approved
Dealer

A-1 Singer Sewing Center

Dawna O'Connor

"We sell the best and service the rest!"

316-685-0226

Park Lane Shopping Center

1012 S. Oliver

Wichita, KS 67218

1 (800) 725-0226

www.A-1Singer.com



Linda Bryan



Joan Fitzgarrald &
Linda Bryan



Judy Troyer

June Events

General Meeting –June 3

Award Winning Hats

- by Iren Vincent, Garden Show winner
- 1:30 pm and 7 pm, Extension Center
- Julia Langel 733-4780

Eat and Shop –June 7

Prairie Flower and Craft in Alden, KS

- Road Trip!
- 9 am Carpool from NW Family Physicians, 3730 N Ridge Rd.
- Stop for breakfast at Carriage Crossing in Yoder
- Please give \$5 for gas to your driver
- Nancy Boewe 681-0000

MEOW Neighborhood Group –June 11

Binding

- by Shirley Binder
- 2 pm, A-1 Singer, 1012 S. Oliver (Parklane Shopping Center)
- Donella Cole 773-4374

Sew Inspired Neighborhood Group – June 16

Texture Magic

- By Shirley Binder
- 1 pm, 23 Chisholm Creek, Wichita, KS.
- Shirley Binder 687-7257

East Side Neighborhood Group – June 17

Body and Sewing Trivia

- by Anne St. Clair
- 7 pm, Needle Nook Fabrics
- Theresa Corle 689-6702

Serger Neighborhood Group – June 23

Heirloom on the Serger Part I

- by Penny Ruddle
- 1pm, 1208 N. Emporia, Wichita, KS
- Julia Waterbury 722-0734

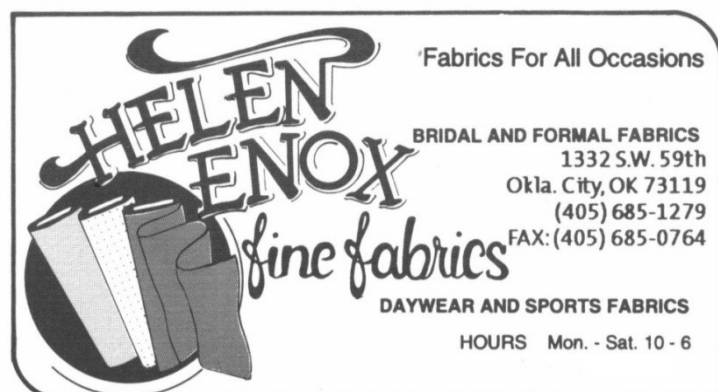
CAB Meeting – June 24

- Planning for upcoming activities
- 1:30 pm, Ingle Room
- Julia Langel 733-4780

Serge It Up Neighborhood Group – June 26

3- and 4-thread Overlock Stitches

- 9:30 am, A-1 Singer, 1012 S. Oliver (Parklane Shopping Center)
- Shirley Binder 687-7257



Jan Adams

July Events

General Meeting - July 1

NO MEETING

- Julia Langel 733-4780

Bonus Sewing Day - July 1

Chemo Caps or Your Own Projects

- 9 am to 4 pm, Extension Center
- Vicky Islielson 529-1565

4-H Style Review - July 2

Chapter Sponsored Cash Prizes

- 7:30 pm, Extension Center, 4-H hall
- Julia Langel 733-4780

MEOW Neighborhood Group - July 9

Machine Quilting with Press-n-Seal

- by JoZana Smith
- 2 pm, A-1 Singer, 1012 S. Oliver (Parklane Shopping Center)
- Donella Cole 773-4374

East Side Neighborhood Group - July 15

Fashion and Costume Design

- by Daniele Fagan Wright
- 7 pm, Grace Presbyterian Church, 5202 E Douglas, park in east parking lot
- Theresa Corle 689-6702

Sew Inspired Neighborhood Group - July 21

North American Smocking - Lozenge

- by Shirley Binder
- 1 pm, 23 Chisholm Creek, Wichita, KS.
- Shirley Binder 687-7257

CAB Meeting - July 22

- Plan upcoming activities
- 1:30 pm, Ingle Room
- Julia Langel 733-4780

Serger Neighborhood Group - July 28

Heirloom on the Serger Part II

- 1pm, 1208 N. Emporia, Wichita, KS
- Julia Waterbury 722-0734

5th Tuesday - July 29 & 30

Charity Projects or Your Own Projects

- 9 am to 4 pm, Extension Center
- Julia Langel 733-4780

Serge It Up Neighborhood Group - July 31

Coverlock stitch

- 9:30 am, A-1 Singer, 1012 S. Oliver (Parklane Shopping Center)
- NOTE: Date Changed due to conference
- Shirley Binder 687-7257



Pat Postlethwait



Carol Graham

On-Going Fundraisers

A nice variety of fabric was recently donated. Be sure to check out what is new! Most fabric is sold a \$1 per yard, but there are some high quality quilt cottons priced a little higher.

There is a bin of **FREE** fabric (for charity projects?)

Now sold from the Fabric Fund tables:

Patterns and magazines that have been donated by members are for sale for 25 cents each or 5 for a dollar. Funds raised go to buy items for the library and some of our other activities. Happy shopping!

Tables open before and after the meeting and during refreshment break.

Welcome New Member

❖ Lori Postlethwait, Wichita (returning member)

In the Library

Items in our library include books, videos, DVDs, magazines and patterns. These items may be checked out for one month at a time. DVDs and videos must be returned the following month and may not be renewed until the end of the meeting so that others have a chance to check them out.

There is a charge of \$1 **per item per month** for items returned late. Any item not returned within 6 months will be considered lost and the member will be responsible for replacing it. A complete listing of library holdings is available at the library table during our monthly meetings.

We are also happy to receive your donations of sewing related magazines that we then sell to other members. However, we request that you limit your donations to no more than two years worth at one time, so that our librarian can handle the volume.

New in the Library:

- Cosmetic Serger-y, DVD by Gail Yellen, Gail Patrice Designs (reviewed in Spring Notions)
- It's All About Embellishment, book by Gail Yellen, Gail Patrice Designs
- Seams Unlikely by Nancy Zieman with Marjorie L. Russell, Glass Road Media & Management, LLC, 2013
- The Colette Guide to Sewing Knits, by Alyson Clair, The Colette Pattern Co., 2014

Midwest Sewing & Vacuum



Bernina
Baby Lock
Janome
Simplicity
Eureka Sanitaire
Hoover
Panasonic

We service what we sell.

Two Locations

111 Pattie
Wichita, Kansas 67211
(316) 262-3438
8:30-5:30 M-F, 9-4 Sat.
7348 W. 21st, Suite 108
Wichita, Kansas 67205
(316) 722-9737
10-5:30 M-F, 10-4 Sat.
www.midwestsewing.net



Community Service Report

Between charity sewing days in March and April, and members working at home, we have so far made 147 dresses and 6 boys' pants for the Dress A Girl charity. These items are delivered to children in the US, Central and South America by missionaries. We hope to eventually see some photos of the children receiving these items.

FABRICS CLASSES NOTIONS STENCILS BOOKS PATTERNS

316.558.8899
 7130 West Maple
 Wichita, Kansas 67209

HOURS
 M - Th 10 - 5:30
 F - Sat 10 - 5:00

In addition to the continuing need for Chemo Caps, Theresa has been made aware of a need for children's blankets. Some printed tops and backing fabric was distributed at the May general meeting. Contact Theresa for size information if you wish to make some small blankets. More charity sewing days will be scheduled later.

Some fabric that will be used for these and other projects has been donated by non-members Mary Silvey and Sharon Rogers. We would like to thank them, and remind members that we are always willing to take donated fabric, so chat up your charity work!.

MEOW Neighborhood Group has decided to have another "Donations Challenge" in October. It was thought that the charities could use another influx of items just before the holidays. Way to sew, ladies!

✂

My Community Service Hours

Name:		Dates:
Items Made or Activity	Charity (if not ASG)	#Hours

Return this form to Theresa Corle at any general meeting or mail to her at 721 S Volutsia, Wichita, KS, 67211. You may make additional copies if needed.



Mary Ann Esch



Mary Torres



Wanda Bledsoe



NEEDLE NOOK FABRICS

PATTERN COMPANIES

Kwik Sew

Sewkeyse

Hot Patterns

Burda

Jalie

Have sewing questions????

Give us a call or email.

NDLNOOKFAB@AOL.COM

Check out our blogsite:

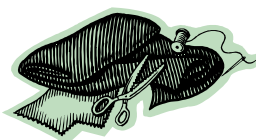
NDLNOKFAB.BLOGSPOT.COM



10% Discount for ASG

Members

(regular priced fabrics
only)



- Stretch Fabrics for every occasion
- Sewing Classes
- Bra Fittings



2714 E Boulevard Plaza

Wichita, Ks 67211-3812

316-684-5989

HOURS

Mon – Fri 10 am – 5:30 pm

Saturday 10 am – 4 pm

Vicky Isliefson



Merchant Discounts

A-1 Singer Sewing Center (15%)

685-0226, A-1singer.com
1012 S Oliver
Wichita KS

Creative Stitch Fabrics & Embroidery (15% on fabrics and notions)

871-2444, creativestitchfabrics.com
200 W Main Street
Mulvane, KS

Hancock Fabrics (10% on some things)

7395 W Central 722-7554
8131 E Kellogg 682-4574
Wichita KS

Helen Enox Fine Fabrics (10%)

405-685-1279
1332 S W 59th
Oklahoma City OK

Hen Feathers (Punch Card)

652-9599, Henfeathersquilts.com
110 N Rock Rd
Wichita KS

Midwest Sewing Center (15%)

111 S Pattie 262-3438
7348 W 21st 722-9737
Wichita KS
Midwestsew.com

Needle Nook Fabrics (10% off regular priced fabrics)

684-5989, ndlnookfab.blogspot.com
2714 Boulevard Plaza
Wichita KS

The Sewing Center (10% excl. machines)

832-0819
2101 W 21st St
Wichita KS

American Sewing Guild CHAPTER MEMBERSHIP FORM

Name _____

Address _____

City _____

State _____ Zip _____

Daytime phone _____

E-mail _____

☐ New ASG Member\$50

☐ New ASG Junior Member\$25

Chapter (city/state) Wichita/KS

☐ ASG Member at Large\$50

☐ Renewal Member\$45
(if received before membership expiration date)

☐ Late Renewal\$50
(if received after membership expiration date)

☐ Junior Renewal\$25



Junior Member Information:

Birthdate (MM) _____ (DD) _____ (YYYY) _____

School Name _____

Grade/year in school _____

Payment:

☐ Check payable to "American Sewing Guild"

☐ MasterCard | Visa | AmEx | Discover (circle one)

Account#: _____

Expiration Date: _____ CVV# _____

Signature: _____

Return to:

(Please allow 2-4 weeks for processing)

The American Sewing Guild

9660 Hillcroft, Suite 510, Houston, TX 77096

PH: (713) 729-3000 • FAX (713) 721-9230

Email: info@asg.org • Website: www.asg.org

AMERICAN SEWING GUILD, INC

WICHITA KS CHAPTER
PO Box 49539
Wichita, KS 67201-4539

NON-PROFIT ORG
U.S POSTAGE
PAID
WICHITA, KS
PERMIT NO. 923

asgwichita@yahoo.com

June / July 2014

ASG: Advancing Sewing As An Art And Life Skill Membership has its privileges!

- Monthly meetings
- Educational programs from local and industry professionals
- Learn time-saving techniques
- How-to demonstrations
- Specialty Neighborhood Groups
- Receive encouragement and support
- Share and network with sewing friends
- Attend chapter-sponsored events at member-only rates
- Participate in fashion shows and sewing fairs
- Contribute to community outreach through sewing
- Get discounts at local and national stores

