

## Lanyard

Cutting your fabrics the right width, stitching an accurate seam allowance, and then turning, pressing and topstitching creates an unbelievably easy fabric strap with a faux piped look.

This method also works for Bag handles. The basic formula is to cut the main fabric  $1\frac{1}{8}$ "- $1\frac{1}{4}$ " wider than the contrast fabric. Many variables are involved such as bias turn of the cloth, the weight of the stabilizer, and the accuracy of your seam allowance. A small test sample is recommended.

Step One: Get your supplies and cut your strips.

### 1" Faux Piped Lanyard

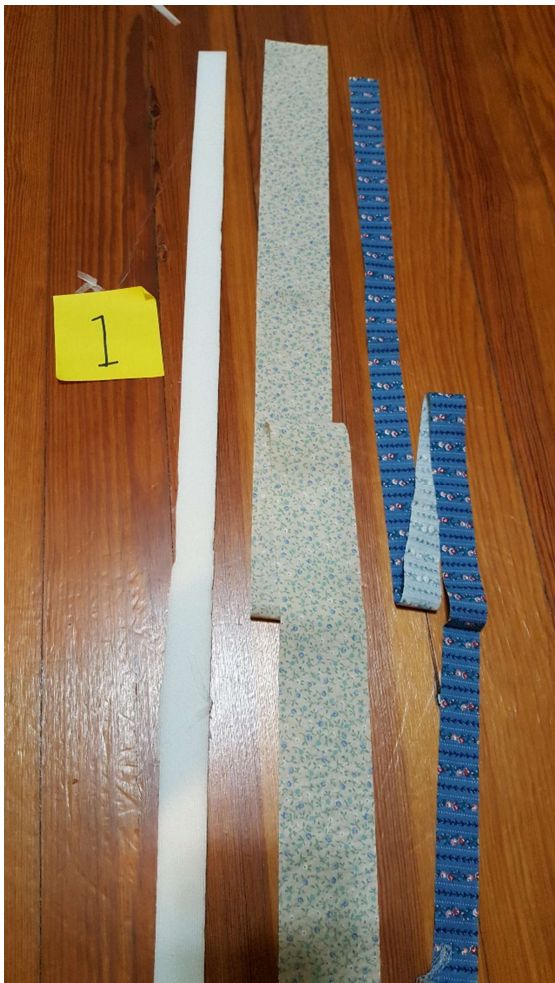
Supplies:

Contrast fabric 1" wide X length (36"-40") or lanyard

Main Fabric 2  $\frac{1}{4}$ " wide X length of lanyard

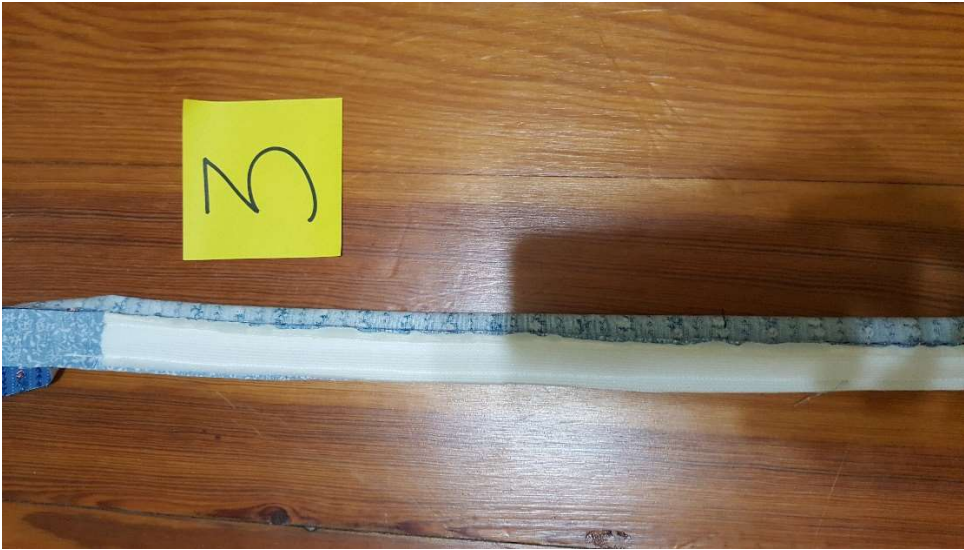
Fusible Foam Stabilizer or fusible fleece 1" wide X length of lanyard. I used Pellon Flex-foam fusible Stabilizer in these samples.

$\frac{3}{4}$ " Lobster Clasp



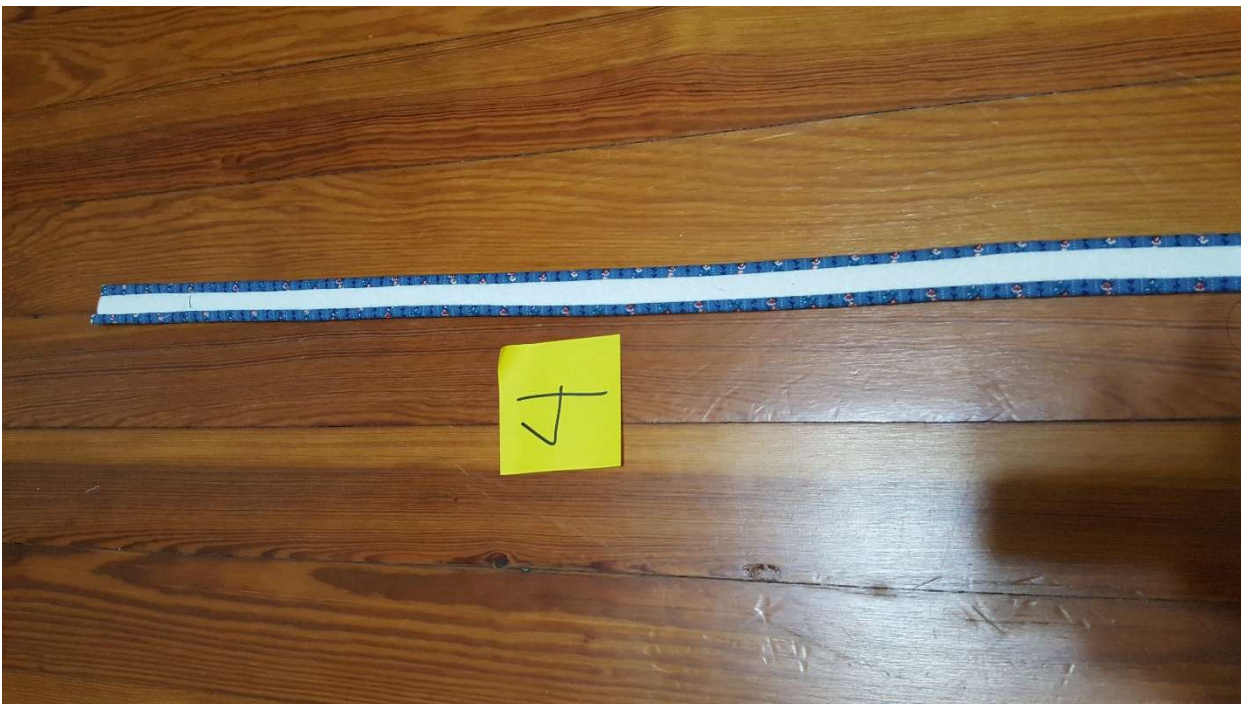
The main fabric will be the one that appears to 'pipe' the edge of the handle.

Step 2: Fuse stabilizer to 1" wide strip of contrast fabric.



Step 3: With right sides together, stitch the main fabric piece to the contrast fabric piece with a 1/4" seam, down one long side.

Stitch the other long side of the handle with 1/4" seam. This seam is a little more difficult as the handle doesn't sit flat. The wider main fabric will form a "bubble" as you sew and want to twist under the foot. This is a good place to use your wonder clips to hold the fabric in place.



Step 4: Turn handle. Manipulate the tube with your fingers and the piping will magically fall into place. Press. Stitch in the ditch on down both sides of the handle.



Step 5: Thread the lobster clasp onto the tube.

With right sides of the tube together stitch across the end. Be careful not to get your lanyard in a twist. Fold the sides around the clasp. Stitch across the lanyard to hold the clasp in place, Enjoy.



For a lanyard that will hang around your neck, sew clasp on with fabric right side to wrong side so that it will lay flat across your neck.

For a key fob, sew or attach your fob with wrong sides together for a smooth loop, (See Picture #5)